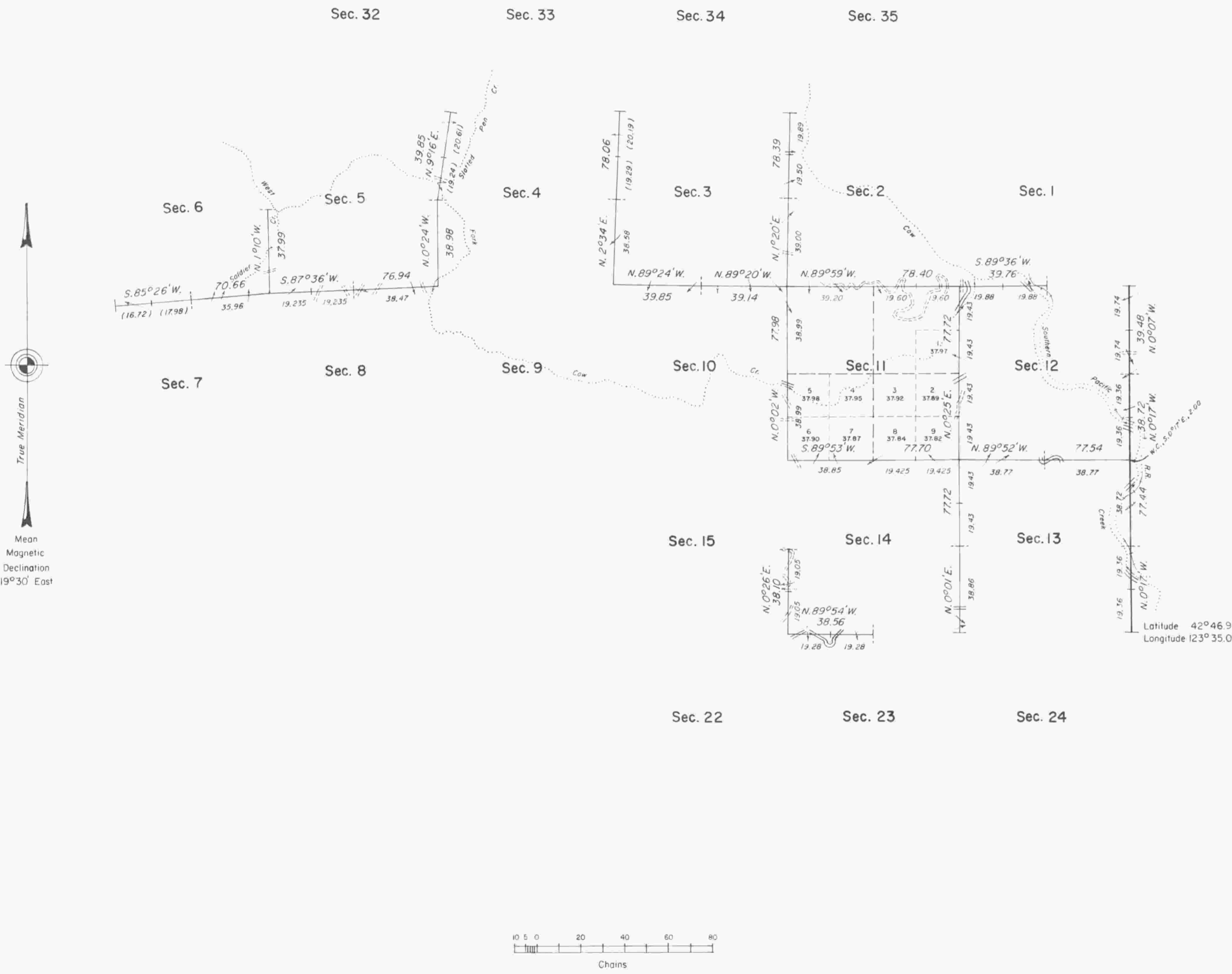


TOWNSHIP 32 SOUTH, RANGE 8 WEST, OF THE WILLAMETTE MERIDIAN, OREGON.

DEPENDENT RESURVEY



A history of surveys is contained in the field notes.

This plat represents a dependent resurvey of a portion of the east boundary and subdivisional lines, T. 32 S., R. 8 W., Willamette Meridian, Oregon, designed to restore the corners in their true original locations according to the best available evidence.

Except as shown hereon, the lottings and areas are as shown on the plat approved November 8, 1883.

Survey executed by Lynn M. Roseberry and Rollin D. Aanrud, Cadastral Surveyors, from August 15, 1973, to October 23, 1975, under Special Instructions dated July 18, 1973, and July 3, 1975, which provided for the surveys included under Group Nos. 821 and 876, Oregon, respectively.

UNITED STATES DEPARTMENT OF THE INTERIOR
BUREAU OF LAND MANAGEMENT
Denver, Colorado January 28, 1980

This plat is strictly conformable to the approved field notes, and the survey, having been correctly executed in accordance with the requirements of law and the regulations of this Bureau, is hereby accepted.

For the Director

Chief, Cadastral Survey
Examination and Approval Staff

Latitude 42° 46.9' N.
Longitude 123° 35.0' W

Timber in this area consists of fir, pine, cedar, oak, and madrone.