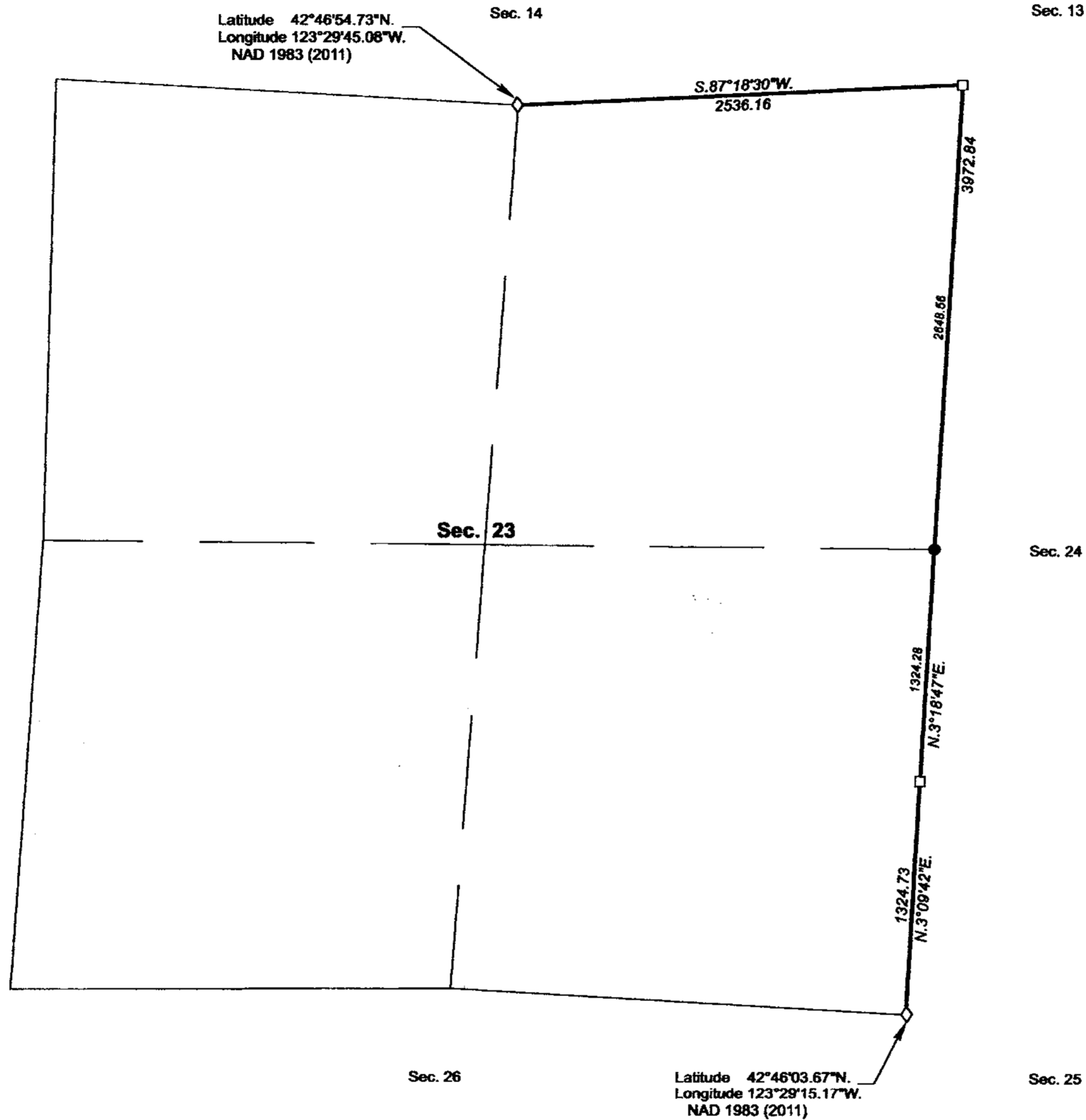


TOWNSHIP 32 SOUTH, RANGE 7 WEST, OF THE WILLAMETTE MERIDIAN, OREGON

CORRECTIVE DEPENDENT RESURVEY AND DEPENDENT RESURVEY

FILED
Date: 10/12/2020 By: JC
This survey consists of:
Map: PLAT: T32-7 2020-1
Narrative: VOL 59
Corner Rpt: PGS 23769-23774
DOUGLAS COUNTY
SURVEYOR

OFFICIALLY FILED: 8/21/2020



A history of surveys, corner descriptions, and other relevant information are contained in the field notes.

This plat represents the corrective dependent resurvey of the line between sections 23 and 24, and the dependent resurvey of a portion of the subdivisional lines, designed to restore the corners in their true original locations according to the best available evidence, Township 32 South, Range 7 West, Willamette Meridian, Oregon.

The lottings and areas are as shown on the plat approved May 31, 1882.

Survey executed by Kevin G. Mulder, Cadastral Surveyor, beginning July 9, 2018, and completed December 12, 2018, pursuant to special instructions approved July 2, 2018, and supplemental special instructions approved December 12, 2018, for Group No. 2925, Oregon.

LEGEND

- ◊ Original corner previously remonumented
- Corner previously established or reestablished
- Corner established or reestablished this survey

UNITED STATES DEPARTMENT OF THE INTERIOR
BUREAU OF LAND MANAGEMENT
Portland, Oregon

This plat is strictly conformable to the approved field notes, and the survey, having been correctly executed in accordance with the requirements of law and the regulations of this Bureau, is hereby accepted.

For the Director
Mary J. M. Hartzell
Chief Cadastral Surveyor of Oregon

July 14 2020
Date

D. C. W.

