

TOWNSHIP 32 SOUTH, RANGE 7 WEST, OF THE WILLAMETTE MERIDIAN, OREGON

DEPENDENT RESURVEY AND SUBDIVISION OF SECTION 19

FILED

Date: 3/3/2009 By: JC  
 This survey consists of:  
 Map AND BLM LINE NOTES  
 Narrative: VOL. 55  
 Corner Rpt: PAGES 21598-608

DOUGLAS COUNTY  
 SURVEYOR

A history of surveys is contained in the field notes.

This plat represents a dependent resurvey of a portion of the west boundary and subdivisional lines, T. 32 S., R. 7 W., Willamette Meridian, Oregon, designed to restore the corners in their true original locations according to the best available evidence, and the subdivision of section 19.

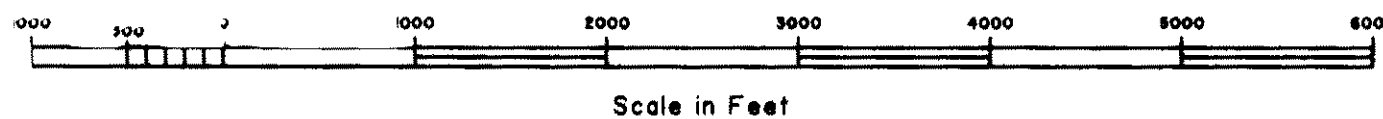
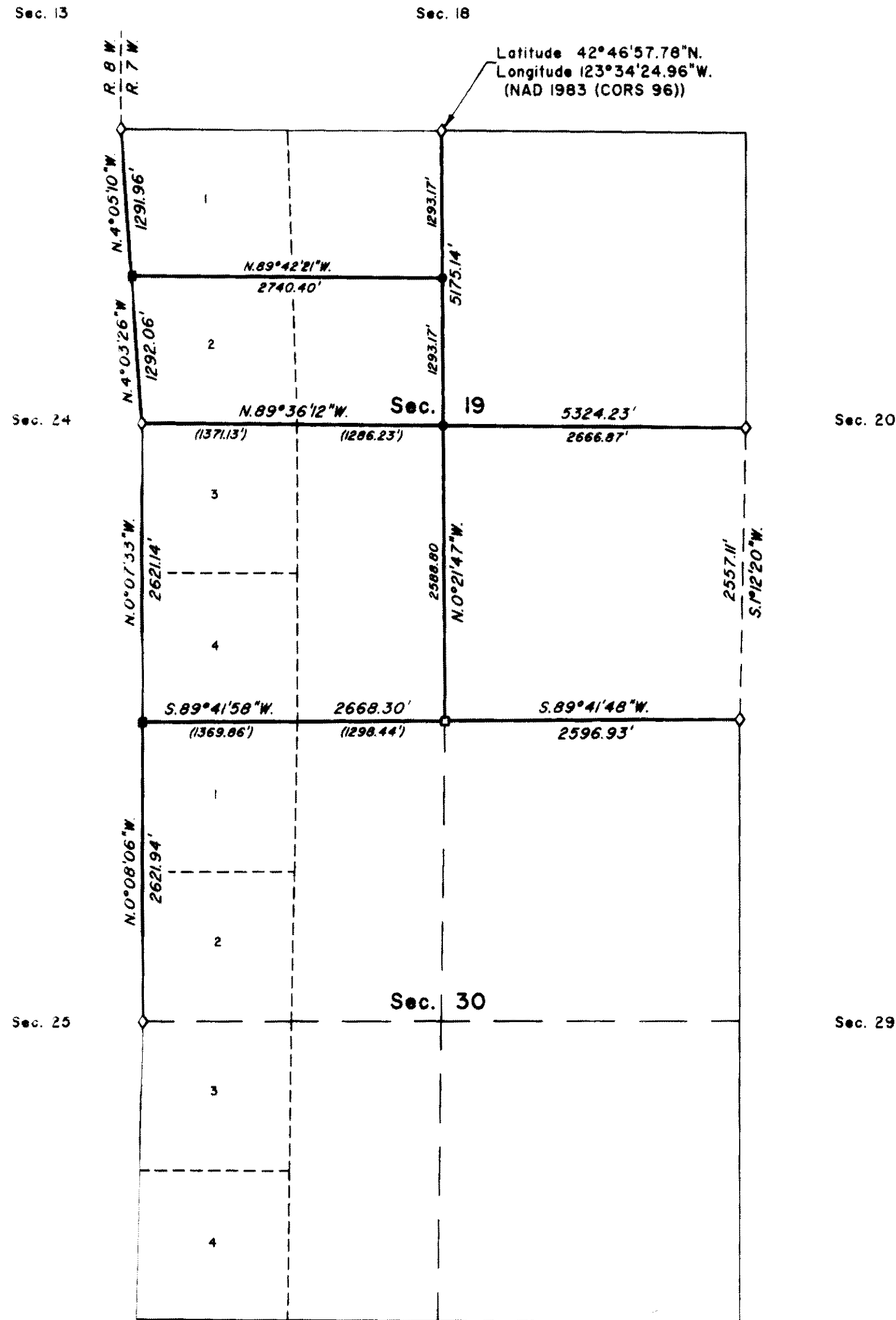
Measured distances and directions have been adjusted by computer software that incorporates a least squares adjustment routine. The adjusted bearings and distances are reported to the nearest second and 0.01 foot.

Actual quantity acreages have been returned for federal interest lands where indicated. The aliquot parts and lots will retain their designation even though the official acreage has changed. The aliquot part of a section will continue to be subdivided by legal subdivision in accordance with the Manual. When an area has been assigned a lot number, it may be further subdivided only by a supplemental plat or another official survey. The official lottings and areas of federal interest lands not affected by this survey are as shown on the plat approved May 31, 1882.

The survey was executed by Arthur R. Rambo Cadastral Surveyor, beginning July 17, 2007 and completed November 1, 2007, pursuant to Special instructions dated June 20, 2007 under Group Number 2179, Oregon.



LEGAL SUBDIVISION	OFFICIAL ACRES
SECTION 19	
NE 1/4 SW 1/4	38.43
LOT 3	41.10
LOT 4	41.09
SE 1/4 SW 1/4	38.61



LEGEND	
◇	Original corner previously remonumented
□	Corner previously established or reestablished
■	Corner previously established or reestablished; remonumented this survey
●	Corner established or reestablished this survey

UNITED STATES DEPARTMENT OF THE INTERIOR  
 BUREAU OF LAND MANAGEMENT

Portland, Oregon

This plat is strictly conformable to the approved field notes, and the survey, having been correctly executed in accordance with the requirements of law and the regulations of this Bureau, is hereby accepted.

For the Director

*John P. Jamworth, Actg*  
 Chief Cadastral Surveyor of Oregon

December 18, 2008  
 Date