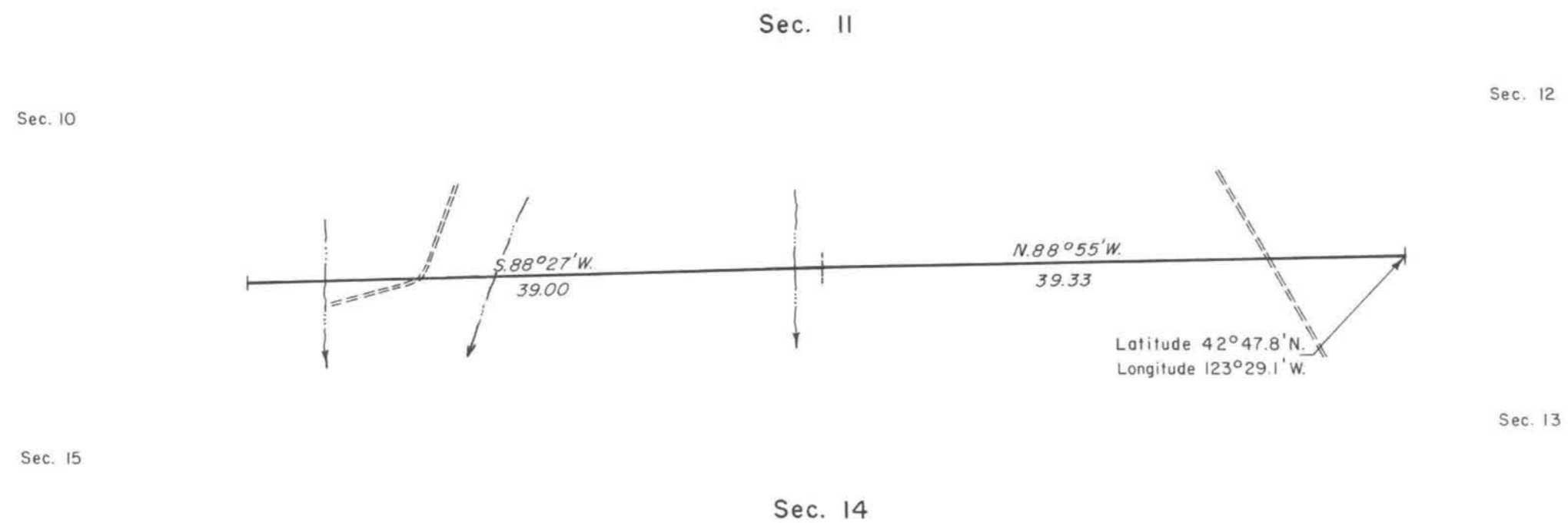
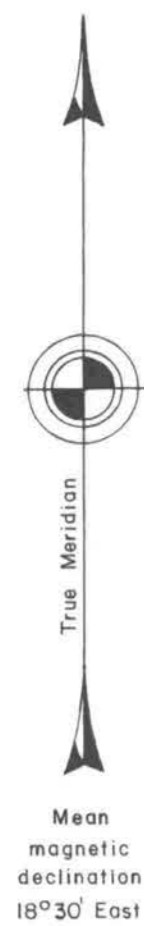


TOWNSHIP 32 SOUTH, RANGE 7 WEST, OF THE WILLAMETTE MERIDIAN, OREGON.

DEPENDENT RESURVEY



The history of surveys is contained in the field notes.

This plat represents a dependent resurvey of a portion of the subdivisional lines, T. 32 S., R. 7 W., Willamette Meridian, Oregon, designed to restore the corners in their true original locations according to the best available evidence.

The survey was executed by Lance J. Bishop and Wayne L. Rogers, Cadastral Surveyors, beginning July 18, 1984, and completed July 19, 1984, pursuant to Special Instructions dated March 1, 1984, under Group Number 1199, Oregon.

Timber in this area consists of hemlock, cedar, madrone, pine, alder, yew, oak, chinquapin, and maple.

UNITED STATES DEPARTMENT OF THE INTERIOR
BUREAU OF LAND MANAGEMENT
Portland, Oregon July 18, 1986

This plat is strictly conformable to the approved field notes, and the survey, having been correctly executed in accordance with the requirements of law and the regulations of this Bureau, is hereby accepted.

For the Director

William W. Glenn
Chief Cadastral Surveyor of Oregon