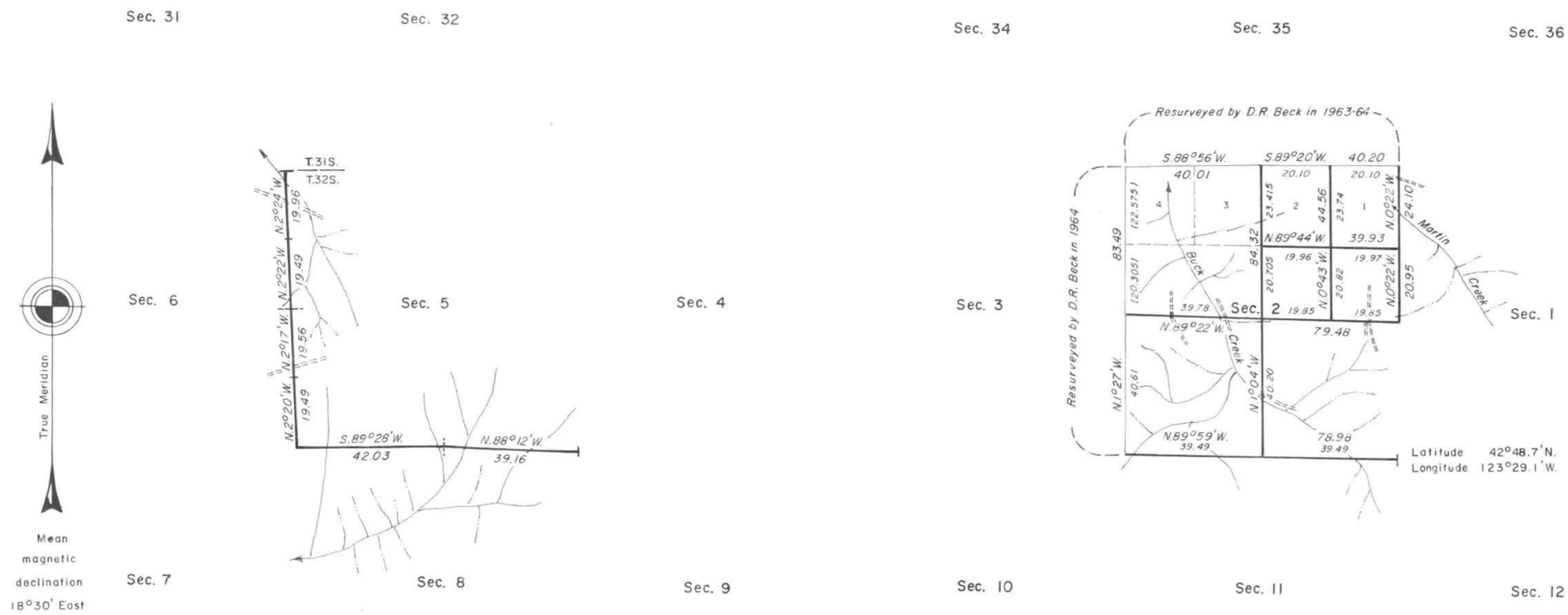


TOWNSHIP 32 SOUTH, RANGE 7 WEST, OF THE WILLAMETTE MERIDIAN, OREGON.

DEPENDENT RESURVEY AND SUBDIVISION OF SECTION 2



A history of surveys is contained in the field notes.

This plat represents a dependent resurvey of a portion of the subdivisional lines, T. 32 S., R. 7 W., Willamette Meridian, Oregon, designed to restore the corners in their true original locations according to the best available evidence, and the subdivision of section 2.

The lottings and areas are as shown on the plat approved May 31, 1882.

The survey was executed by James E. Jelley and Wayne L. Rogers, Cadastral Surveyors, beginning April 26, 1982, and completed June 24, 1982, pursuant to Special Instructions dated December 29, 1981, for Group No. 1086, Oregon.

Timber in this area consists of fir, cedar, pine, oak, maple, madrone, alder, chinquapin, ash, and yew.

Latitude 42°48.7'N.
Longitude 123°29.1'W.

UNITED STATES DEPARTMENT OF THE INTERIOR
BUREAU OF LAND MANAGEMENT
Portland, Oregon August 3, 1984

This plat is strictly conformable to the approved field notes, and the survey, having been correctly executed in accordance with the requirements of law and the regulations of this Bureau, is hereby accepted.

For the Director

William W. Glenn

Chief Cadastral Surveyor of Oregon

