

TOWNSHIP 32 SOUTH, RANGE 7 WEST, OF THE WILLAMETTE MERIDIAN, OREGON.

DEPENDENT RESURVEY AND REMONUMENTATION

This plat represents a dependent resurvey of a portion of the subdivisional lines and remonumentation of certain original corner points designed to restore the corners in their true original location according to the best available evidence, T. 32 S., R. 7 W., Willamette Meridian, Oregon.

The lottings and areas are as shown on the plat approved May 31, 1882.

The east boundary of the township was surveyed by Wells Lake and George W. Hyde in 1855.

The east boundary of the township was resurveyed, and the west boundary of the township and subdivisional lines were surveyed by William H. Byars in 1881.

The corner of secs. 13, 18, 19, and 24 on the west boundary of the township was remonumented without survey by Hans W. Thielsen in 1958.

A portion of the west boundary of the township was resurveyed by Lynn M. Roseberry and Rollin D. Aanrud in 1973-75.

Survey executed by Lynn M. Roseberry and Rollin D. Aanrud, Cadastral Surveyors, beginning August 9, 1978, and completed September 28, 1978, pursuant to Special Instructions dated May 3, 1957, and June 12, 1978, for Group Nos. 350 and 960 respectively, Oregon.

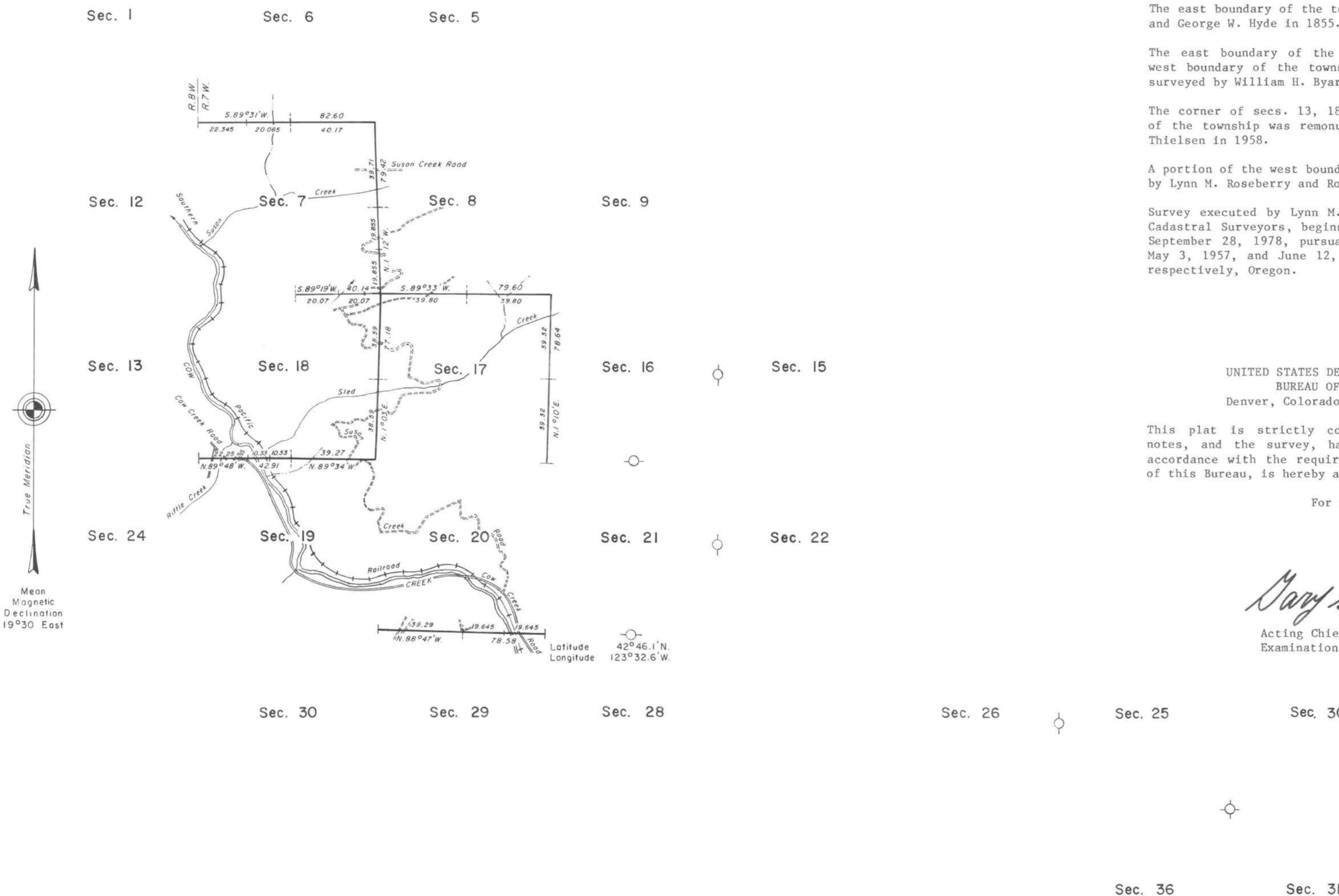
UNITED STATES DEPARTMENT OF THE INTERIOR
BUREAU OF LAND MANAGEMENT
Denver, Colorado February 12, 1982

This plat is strictly conformable to the approved field notes, and the survey, having been correctly executed in accordance with the requirements of law and the regulations of this Bureau, is hereby accepted.

For the Director

Mary S. Speight

Acting Chief, Cadastral Survey
Examination and Approval Staff



Timber in this area consists of fir, pine, cedar, oak, madrone, chinquapin, maple, and alder.

