

TOWNSHIP 32 SOUTH, RANGE 7 WEST, OF THE WILLAMETTE MERIDIAN, OREGON.
DEPENDENT RESURVEY

FILED
RECEIVED *JH*

JUL 22 1980

COUNTY SURVEYOR
DOUGLAS COUNTY, ORE

This plat represents a dependent resurvey of a portion of the east boundary and a portion of the subdivisional lines, T. 32 S., R. 7 W., Willamette Meridian, Oregon, designed to restore the corners in their true original locations according to the best available evidence.

The east boundary of the township was surveyed by Wells Lake and George W. Hyde, in 1855.

The subdivisional lines were surveyed by William H. Byars, in 1881.

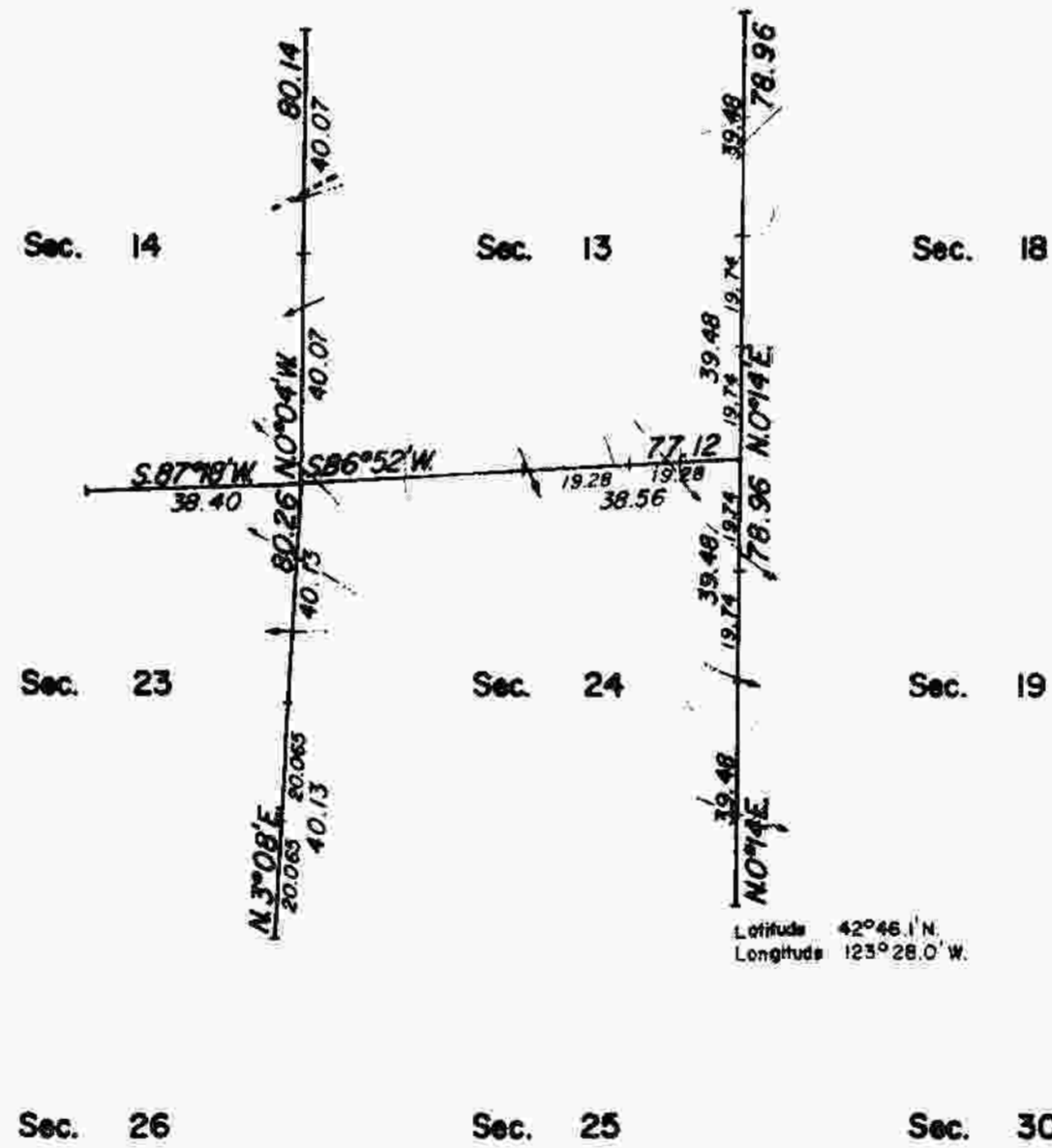
Survey executed by G. Steven Popken and James J. Carlson, Cadastral Surveyors from September 25, 1975, to June 14, 1976, under Special Instructions dated August 13, 1975, which provided for the surveys included under Group No. 884, Oregon.

UNITED STATES DEPARTMENT OF THE INTERIOR
BUREAU OF LAND MANAGEMENT
Washington, D.C. November 14, 1977

This plat is strictly conformable to the approved field notes, and the survey, having been correctly executed in accordance with the requirements of law and the regulations of this Bureau, is hereby accepted.

For the Director

Bernard W. [Signature]
Chief, Division of Cadastral Survey



Latitude 42° 46.1' N
Longitude 123° 28.0' W

*THIS INFORMATION RE: THE "SUSPENSION"
"LIFTED SUSPENSION" REC'D BY THIS OFFICE 7/22/80 - J. Laugen
Douglas County Surveyors Office*

*S 13
"SUSPENSION" FILED, July 2, 1980 File No. 12 (10-401)*

*SEE CORRECTIVE SURVEY BEG. 7/80
SEE CORRECTIVE SURVEY FILED
10/3/90 IN T32-6
Between Secs 13 & 18*

Timber in this area consists of fir, pine, oak, madrone, chinquapin, and cedar.

