

TOWNSHIP 32 SOUTH, RANGE 7 WEST, OF THE WILLAMETTE MERIDIAN, OREGON.  
DEPENDENT RESURVEY

This plat represents a dependent resurvey of a portion of the east boundary and a portion of the subdivisional lines, T. 32 S., R. 7 W., Willamette Meridian, Oregon, designed to restore the corners in their true original locations according to the best available evidence.

The east boundary of the township was surveyed by Wells Lake and George W. Hyde, in 1855.

The subdivisional lines were surveyed by William H. Byars, in 1881.

Survey executed by G. Steven Popken and James J. Carlson, Cadastral Surveyors from September 25, 1975, to June 14, 1976, under Special Instructions dated August 13, 1975, which provided for the surveys included under Group No. 884, Oregon.

UNITED STATES DEPARTMENT OF THE INTERIOR  
BUREAU OF LAND MANAGEMENT  
Washington, D.C. November 14, 1977

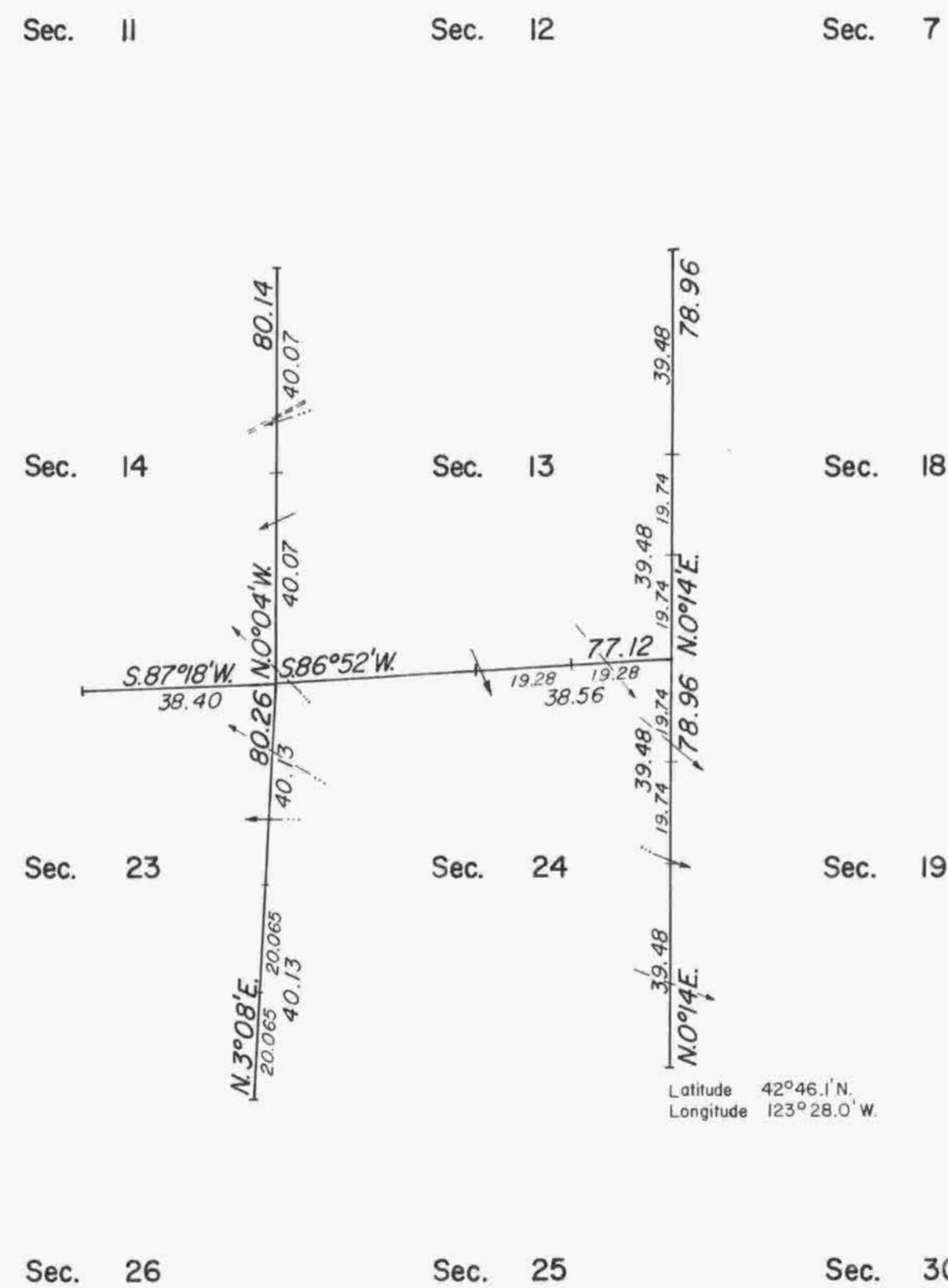
This plat is strictly conformable to the approved field notes, and the survey, having been correctly executed in accordance with the requirements of law and the regulations of this Bureau, is hereby accepted.

For the Director

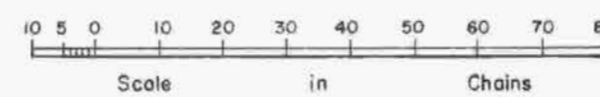
*Bernard W. [Signature]*  
Chief, Division of Cadastral Survey



MEAN  
MAGNETIC  
DECLINATION  
19°30'E.



S 15  
"SUSPENSION LIFTED, July 7, 1980, File 9683.12 (D-401)"



Timber in this area consists of fir, pine, oak, madrone, chinquapin, and cedar.