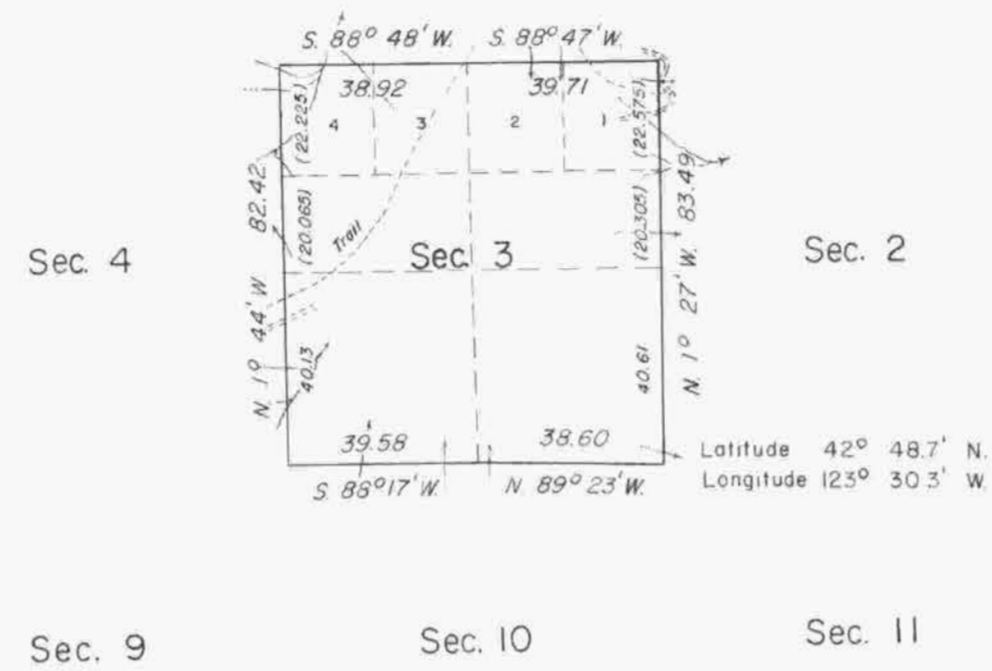


# TOWNSHIP 32 SOUTH, RANGE 7 WEST, OF THE WILLAMETTE MERIDIAN, OREGON.

DEPENDENT RESURVEY



This plat represents a retracement and reestablishment of the south, east, and west lines of section 3, designed to restore the corners in their true original locations according to the best available evidence. The lottings and areas are as shown on the plat approved May 31, 1882.

The subdivisional lines were surveyed by William H. Byars, in 1881. The north boundary of section 3 was resurveyed concurrently under Group No. 531, as the south boundary, section 34, T. 31 S., R. 7 W.

This survey was executed by Donald R. Beck, June 3 to June 17, 1964, under Special Instructions dated March 25, 1964, for Group No. 543, Oregon.



UNITED STATES DEPARTMENT OF THE INTERIOR  
BUREAU OF LAND MANAGEMENT  
Washington, D. C.      August 25, 1965

This plat is strictly conformable to the approved field notes, and the survey, having been correctly executed in accordance with the requirements of law and the regulations of this Bureau, is hereby accepted.

For the Director

*Clark F. Lumm*

Acting Chief, Division of Engineering



Area resurveyed: 657.52 Acres

Timber in this area consists of Douglas fir, pine, white fir, hemlock, maple, madrone, chinquapin, yew, alder, cedar, and dogwood.