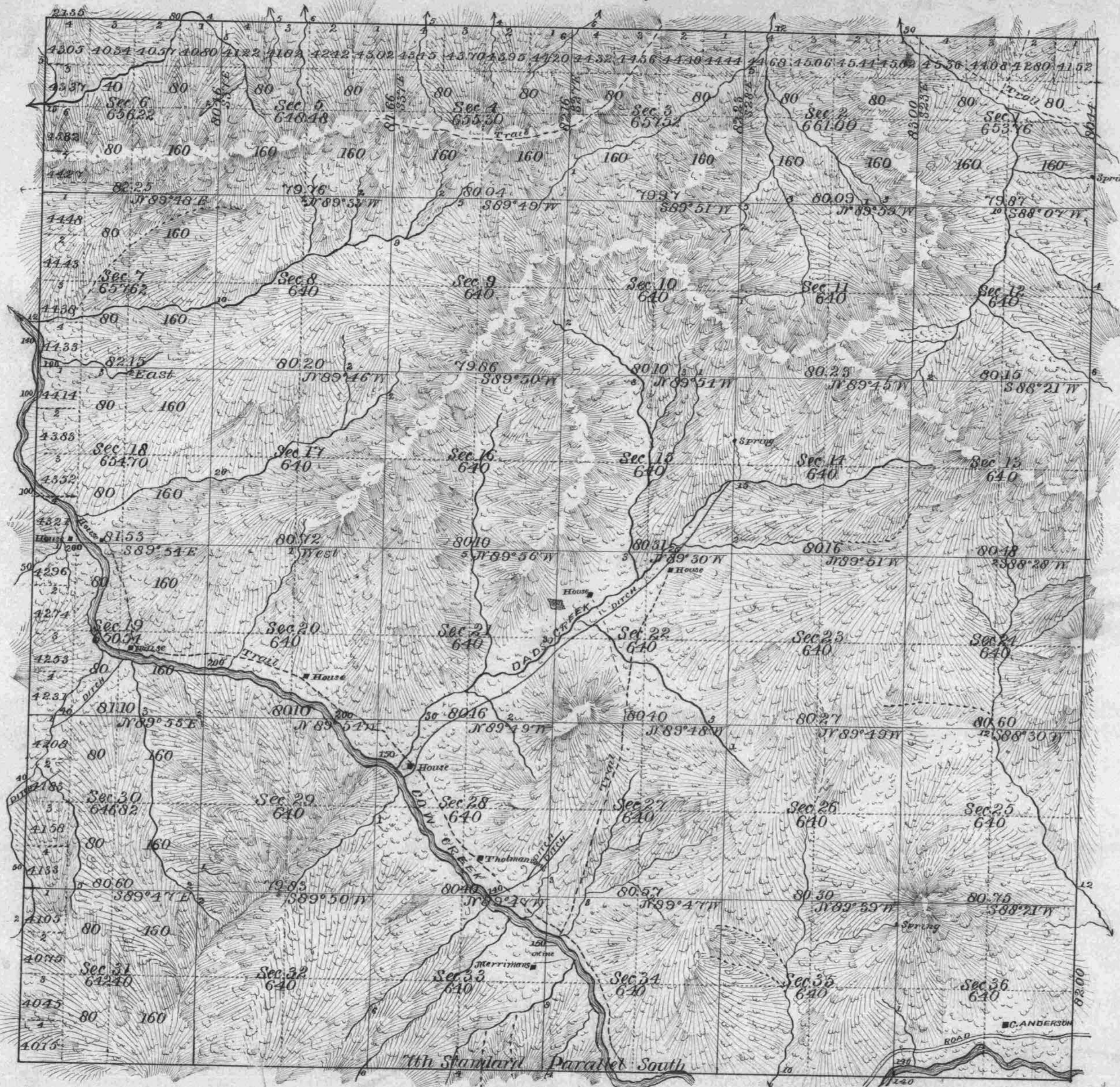


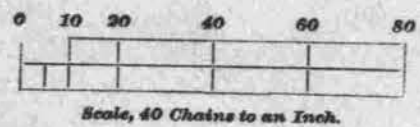
Township No. 32 South Range No. 7 West Willamette Meridian, Oregon.



ACCEPTED BY THE HON. COMMISSIONER G. L. O. June 14 1882

Total number of Acres 25,184.36

SURVEYS DESIGNATED.	BY WHOM SURVEYED.	NO.	DATE OF CONTRACT.	AMOUNT OF SURVEYS.			WHEN SURVEYED.	MEAN DECLINATION.
				Miles.	Chains.	Links.		
Township Lines	W. H. Byars	420	Sept 16 1881	12	01	35		
Resurvey E. Bily	do do do	do	do do do	6	02	44		
Subdivisions	do do do	do	do do do	60	22	56	Oct 25 to Nov 9, 1881	18° E.



The above map of the Subdivisions of Township No. 32 South of Range No. 7 West of the Willamette Meridian, Oregon, is strictly conformable to the Field Notes of the survey thereof on file in this office, which have been examined and approved.

U. S. Surveyor-General's Office,
Portland, Oregon,
May 31, 1882
James C. Tolman
Surveyor-General of Oregon.