

# TOWNSHIP 32 SOUTH, RANGE 6 WEST, OF THE WILLAMETTE MERIDIAN, OREGON

## DEPENDENT RESURVEY AND SUBDIVISION OF SECTION 13

FILED  
 Date: 10/8/2020 By: JC  
 This survey consists of:  
 Map: PLAT: T32-6 2020-1  
 Narrative: VOL 59  
 Corner Rpt: PGS 23758-23768

DOUGLAS COUNTY  
 SURVEYOR

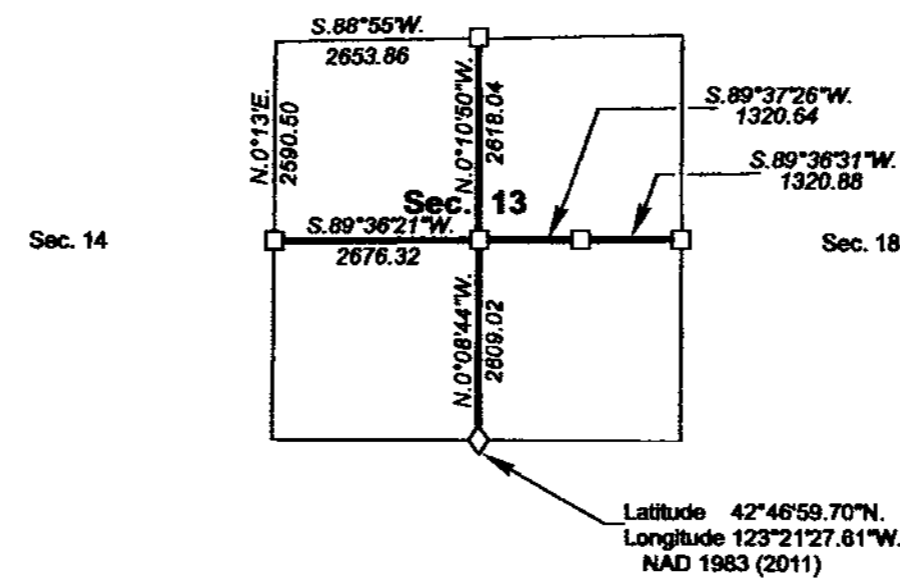
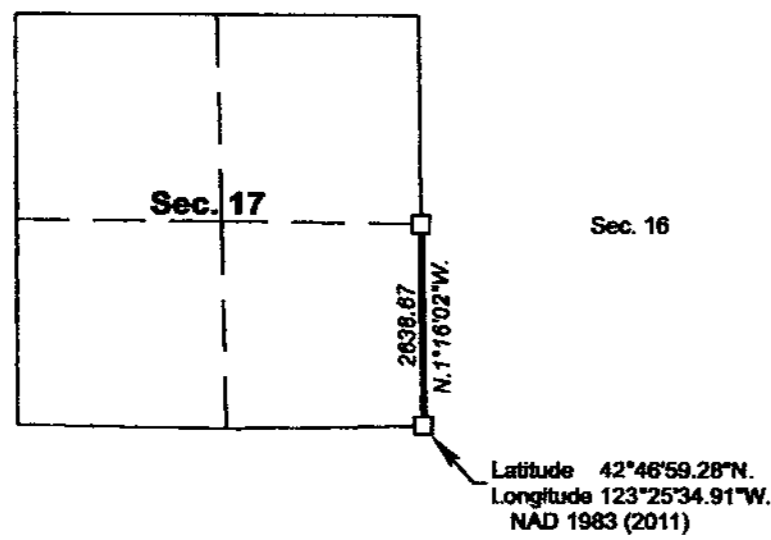
A history of surveys, corner descriptions, and other relevant information are contained in the field notes.

This plat represents the dependent resurvey of a portion of the east and north boundaries and subdivisional lines, designed to restore the corners in their true original locations according to the best available evidence, and the subdivision of section 13, Township 32 South, Range 6 West, Willamette Meridian, Oregon.

Official areas based on the measurements of this survey have been returned for Federal interest land where indicated. Aliquot part legal subdivisions retain their aliquot characteristics and refer to precisely the same land as that which was previously identified by its original survey or description. A lot can only be subdivided by survey or supplemental plat. Except as indicated hereon, the lottings and areas are as shown on the plats approved March 31, 1856, and May 31, 1882.

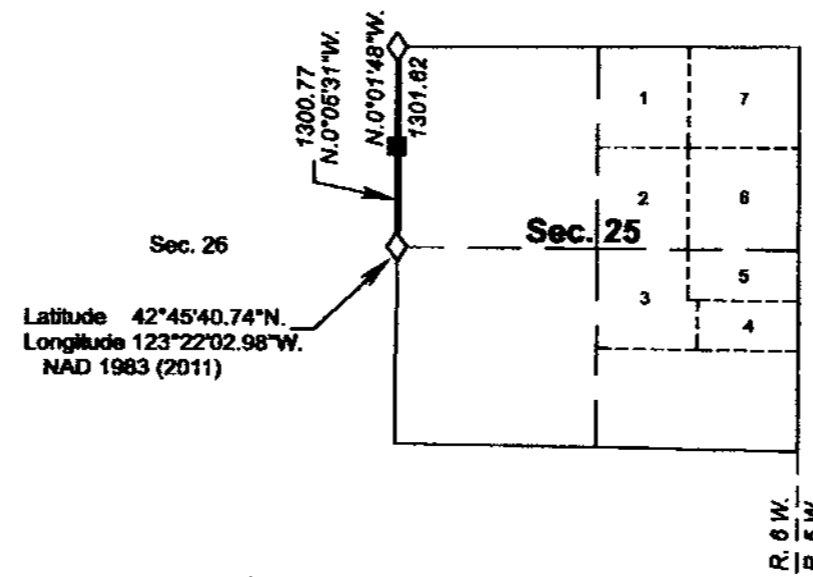
Survey executed by Kevin G. Mulder, Cadastral Surveyor, beginning July 9, 2018, and completed October 4, 2018, pursuant to special instructions approved July 2, 2018, for Group No. 2925, Oregon.

OFFICIALLY FILED: 8/21/2020



Sec. 20                      Sec. 21

Sec. 23                      Sec. 24



LEGAL SUBDIVISION	OFFICIAL ACRES
SECTION 13	
NE1/4 NW1/4	39.90
NW1/4 NW1/4	39.69
SW1/4 NW1/4	39.83
SE1/4 NW1/4	40.04
<b>TOTAL AREA</b>	<b>159.46</b>
<b>FEDERAL INTEREST LAND RESURVEYED</b>	

NOTE:  
 The lightweight lines with bearings and distances shown in section 13 were surveyed by Rollin D. Aanrud in 1980, and were utilized to calculate the areas for Federal interest land.

**LEGEND**

- ◊ Original corner previously remonumented
- ◆ Original corner remonumented this survey
- Corner previously established or reestablished
- Corner previously established or reestablished; remonumented this survey

UNITED STATES DEPARTMENT OF THE INTERIOR  
 BUREAU OF LAND MANAGEMENT

Portland, Oregon

This plat is strictly conformable to the approved field notes, and the survey, having been correctly executed in accordance with the requirements of law and the regulations of this Bureau, is hereby accepted.

For the Director

*Mary M. Hart*  
 Chief Cadastral Surveyor of Oregon

*July 14, 2020*  
 Date

B. C. W.

