

TOWNSHIP 32 SOUTH, RANGE 6 WEST, OF THE WILLAMETTE MERIDIAN, OREGON

DEPENDENT RESURVEY AND SUBDIVISION OF SECTION 23

FILED
 Date: 11/18/2008 By: JC
 This survey consists of:
 -Map: LINE NOTES IN VOL 55
 -Narrative: PAGES 21476-88
 -Corner Rpt: PAGES 21476-88
 DOUGLAS COUNTY
 SURVEYOR

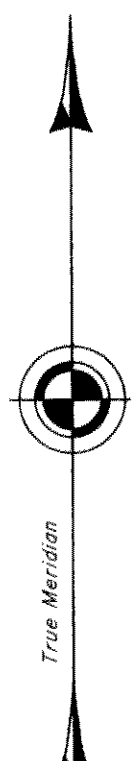
A history of surveys is contained in the field notes.

This plat represents a dependent resurvey of a portion of the subdivisional lines, T. 32 S., R. 6 W., Willamette Meridian, Oregon, designed to restore the corners in their true original locations according to the best available evidence, and the subdivision of section 23.

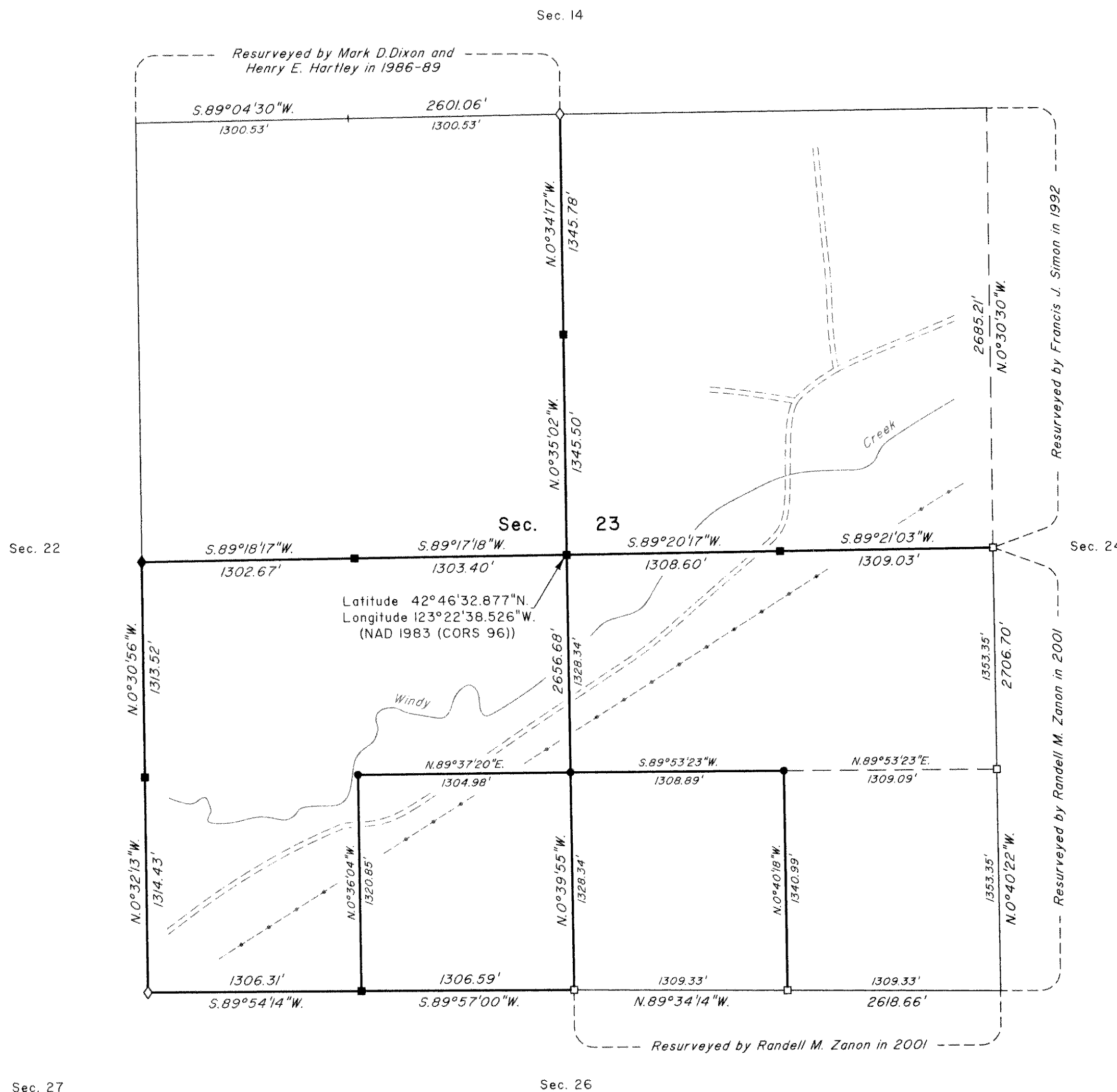
Measured distances and directions have been adjusted by computer software that incorporates a least squares adjustment routine. The adjusted bearings and distances are reported to the nearest second and 0.01 foot.

Actual quantity acreages have been returned for federal interest lands where indicated. The aliquot part will retain its designation even though the official acreage has changed. The aliquot part of a section will continue to be subdivided by legal subdivision in accordance with the Manual. When an area has been assigned a lot number, it may be further subdivided only by a supplemental plat or another official survey. The official lottings and areas of federal interest lands not affected by this survey are as shown on the plat approved May 31, 1882.

The survey was executed by Francis J. Simon, Cadastral Surveyor, beginning March 27, 2007, and completed April 26, 2007, pursuant to Special Instructions dated March 13, 2007, under Group Number 2160, Oregon.



LEGAL SUBDIVISION	OFFICIAL ACRES
SECTION 23	
SE1/4 SW1/4	39.71
SW1/4 SE1/4	40.11



LEGEND	
◇	Original corner previously remonumented
◆	Original corner remonumented this survey
□	Corner previously established or reestablished
■	Corner previously established or reestablished; remonumented this survey
●	Corner established this survey

UNITED STATES DEPARTMENT OF THE INTERIOR
 BUREAU OF LAND MANAGEMENT

Portland, Oregon

This plat is strictly conformable to the approved field notes, and the survey, having been correctly executed in accordance with the requirements of law and the regulations of this Bureau, is hereby accepted.

For the Director

John P. Townsend, Acting
 Chief Cadastral Surveyor of Oregon

Sept. 30, 2008
 Date

