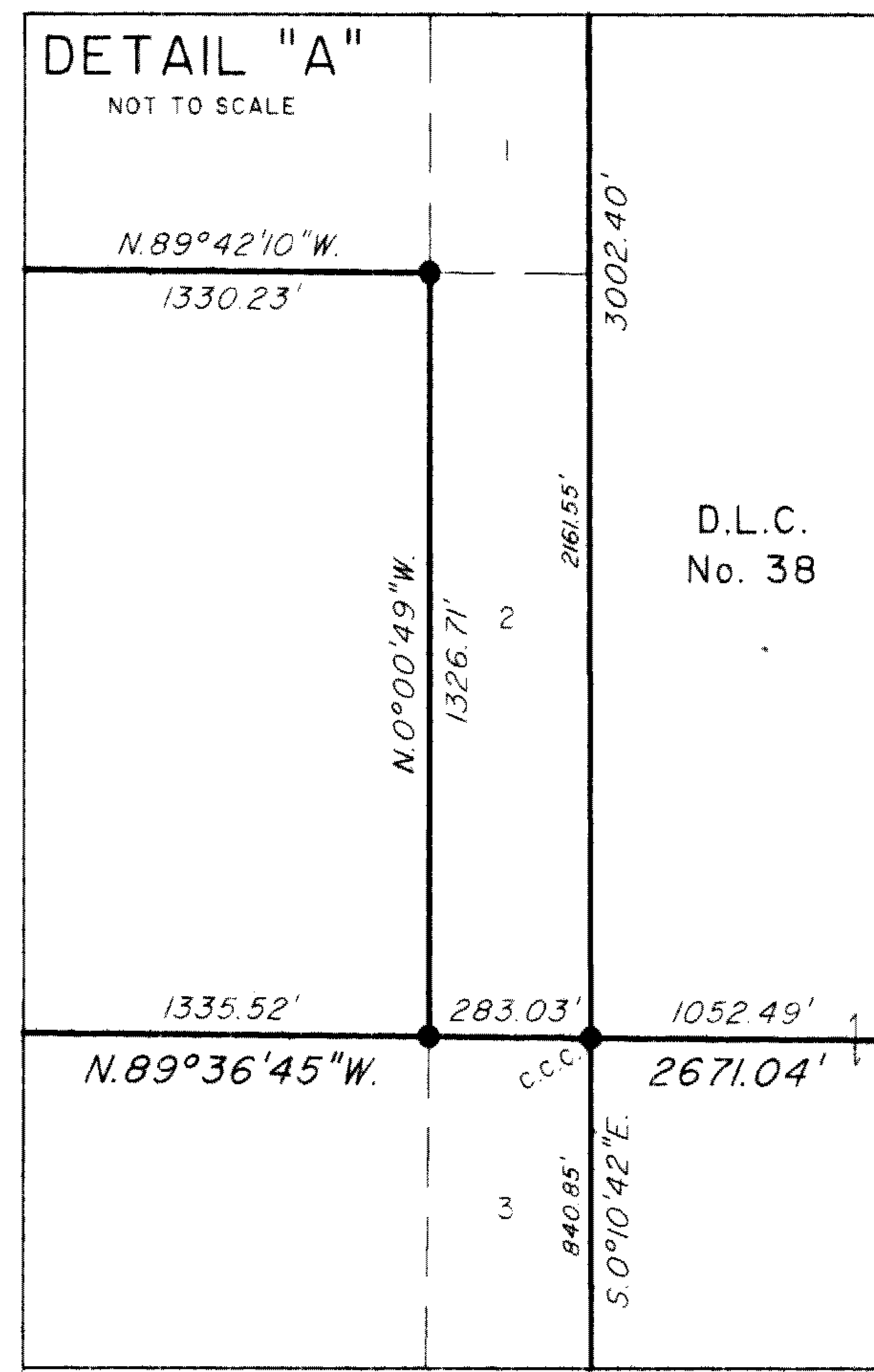


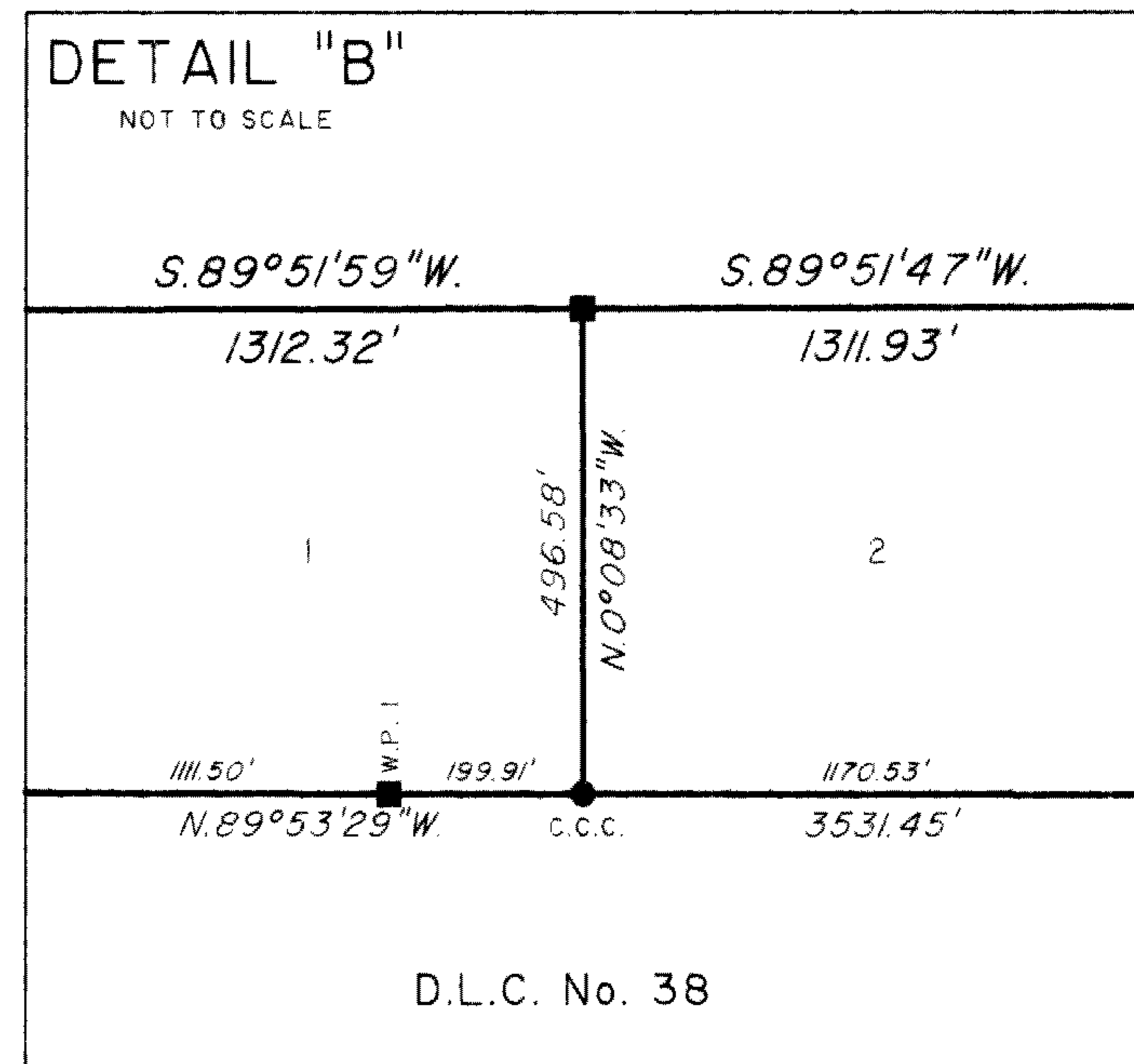
FILED  
 Date: 4/16/2008 By: JC  
 This survey consists of:  
 Map: V08-55  
 Name: D.L.C. No. 38  
 Owner: RICHARD J. DIECKMANN  
 DOUGLAS COUNTY SURVEYOR

# TOWNSHIP 32 SOUTH, RANGE 6 WEST, OF THE WILLAMETTE MERIDIAN, OREGON

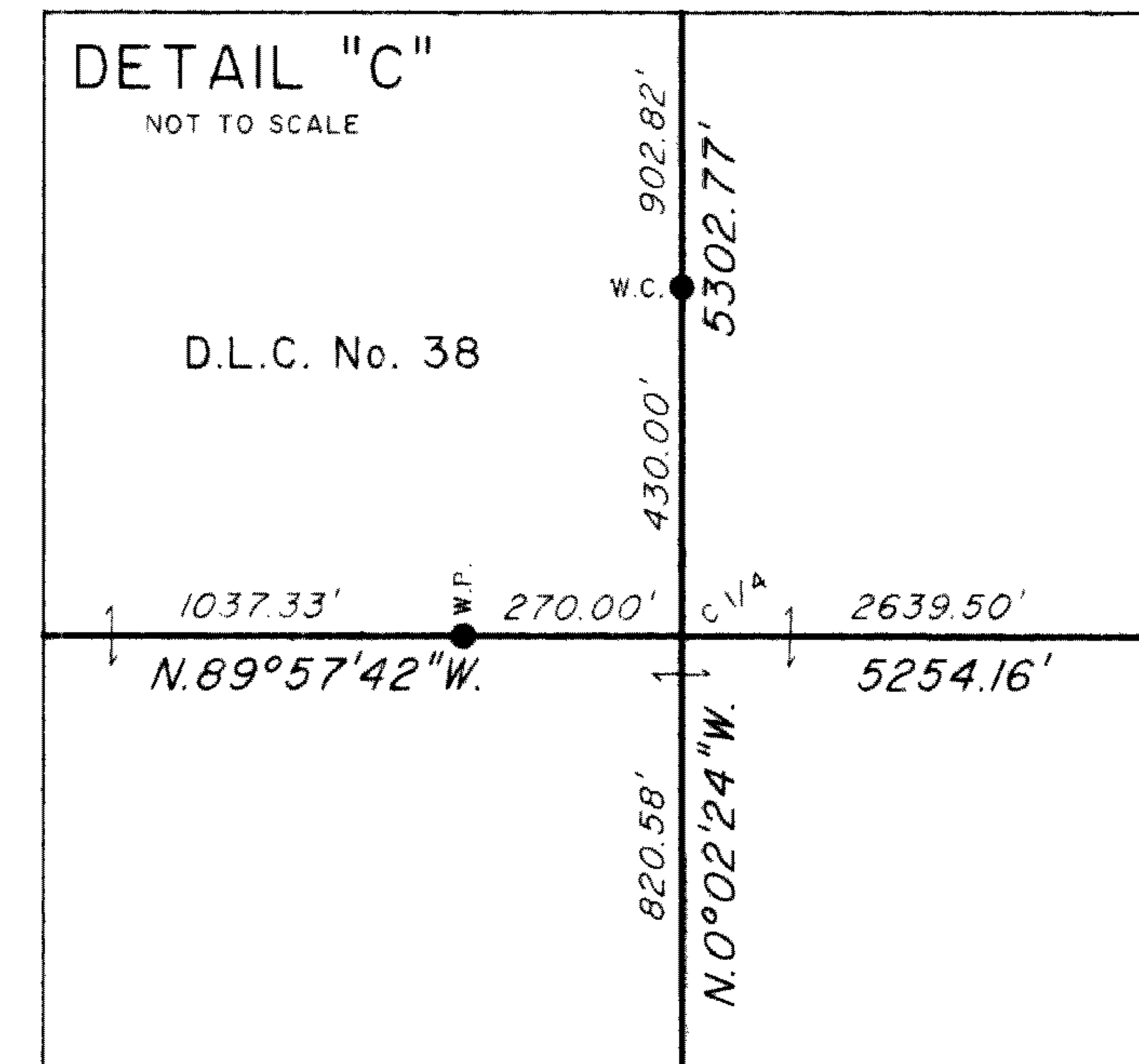
## DEPENDENT RESURVEY, AND SUBDIVISION OF SECTIONS 34 AND 35



Sec. 28



Sec. 27



Sec. 26

Sec. 25

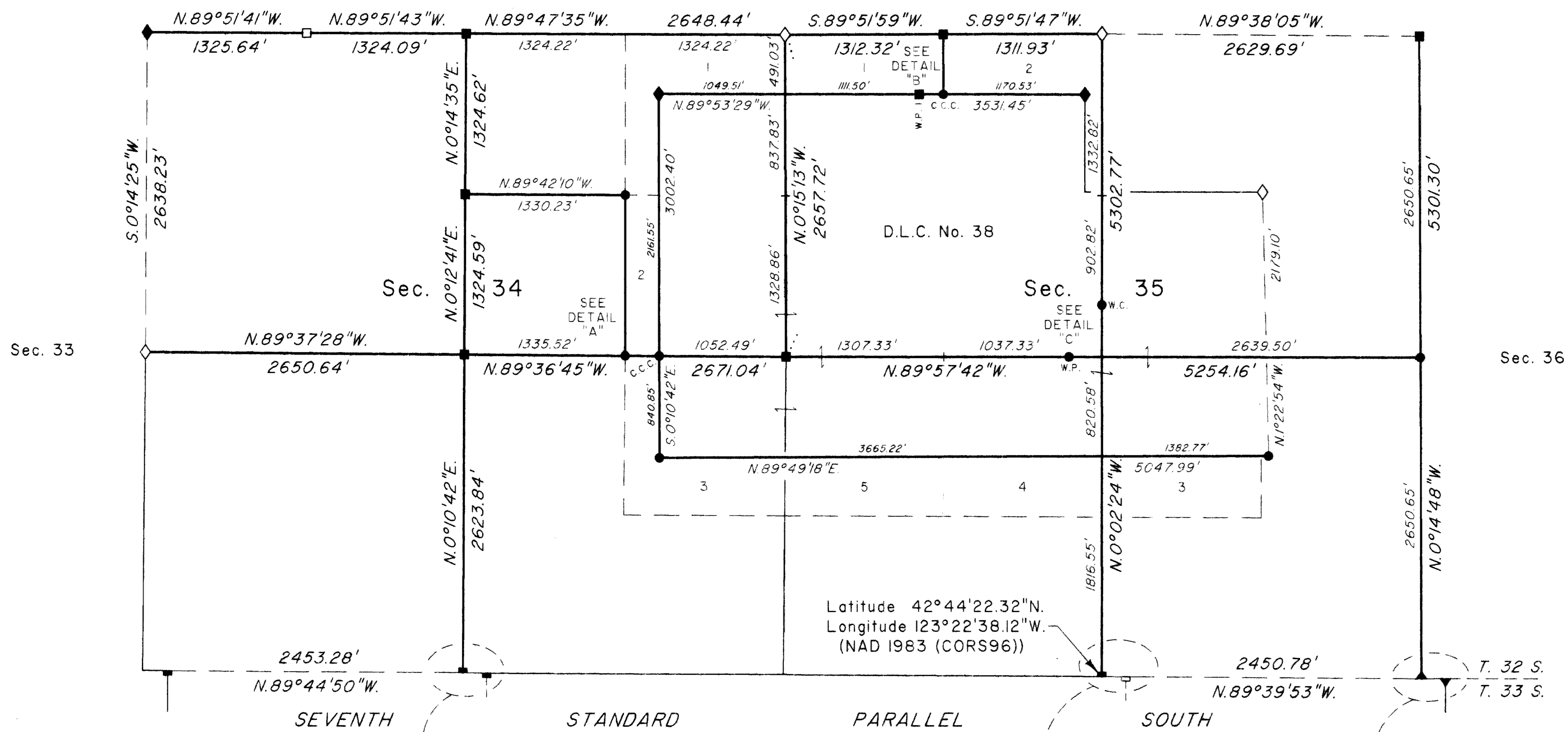
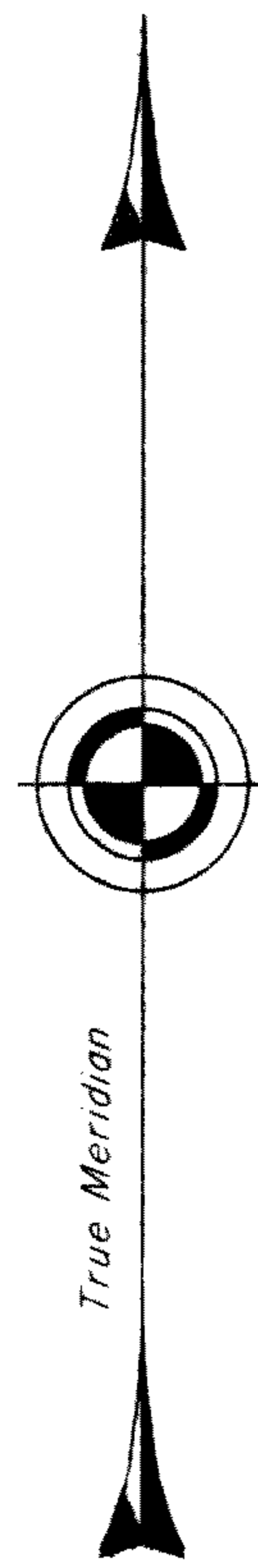
A history of surveys is contained in the field notes.

This plat represents a dependent resurvey of a portion of the subdivisional lines and certain lines of donation land claim No. 38, T. 32 S., R. 6 W., Willamette Meridian, Oregon, designed to restore the corners in their true original locations according to the best available evidence, and the subdivision of sections 34 and 35.

Measured distances and directions have been adjusted by computer software that incorporates a least squares adjustment routine. The adjusted bearings and distances are reported to the nearest second and 0.01 foot.

The lottings and areas are as shown on the plats approved March 31, 1856 and December 23, 1859.

The survey was executed by Richard J. Dieckmann, Cadastral Surveyor, beginning July 26, 2006 and completed February 12, 2007, pursuant to Special Instructions dated July 15, 2005, under Group Number 2125, Oregon.



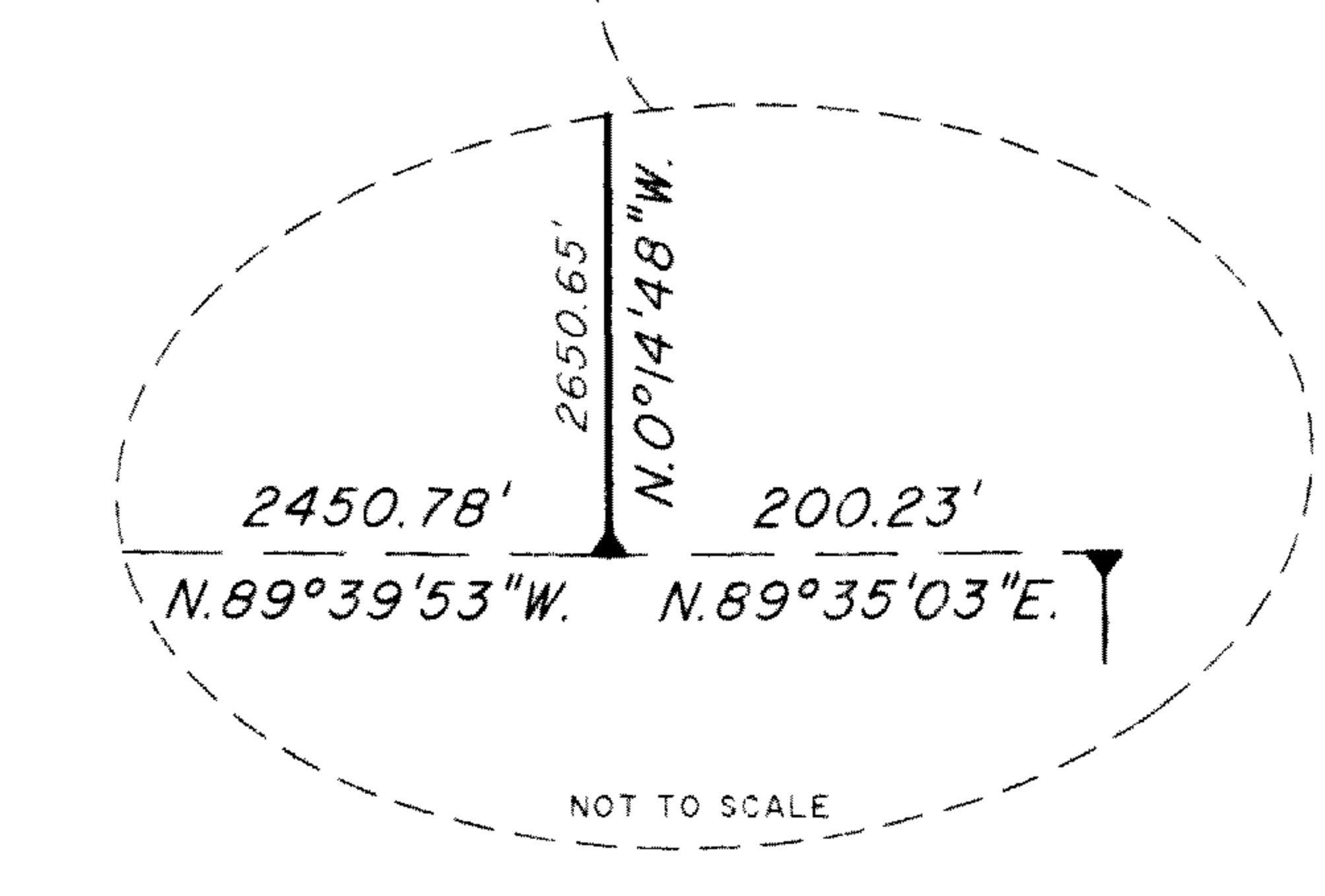
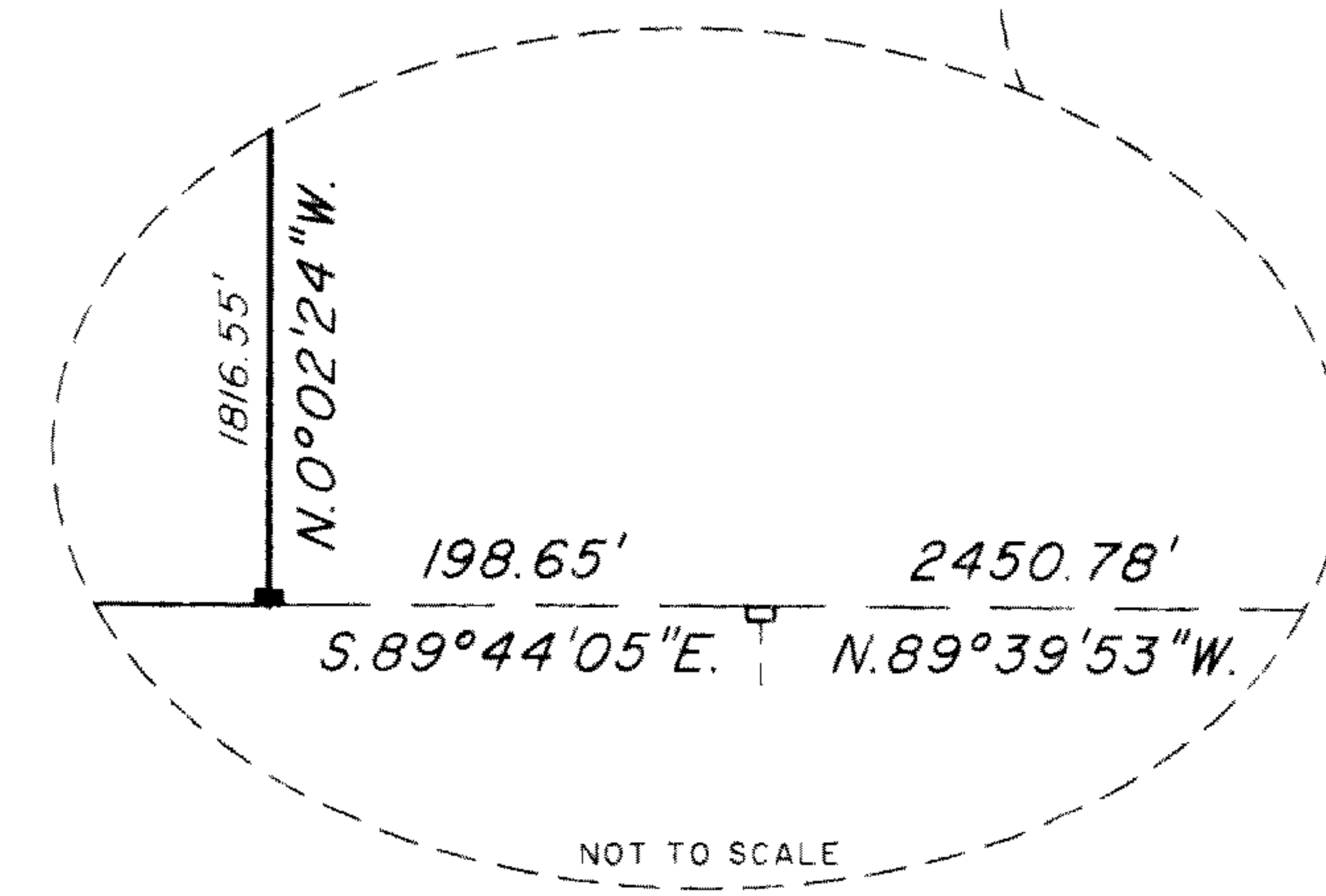
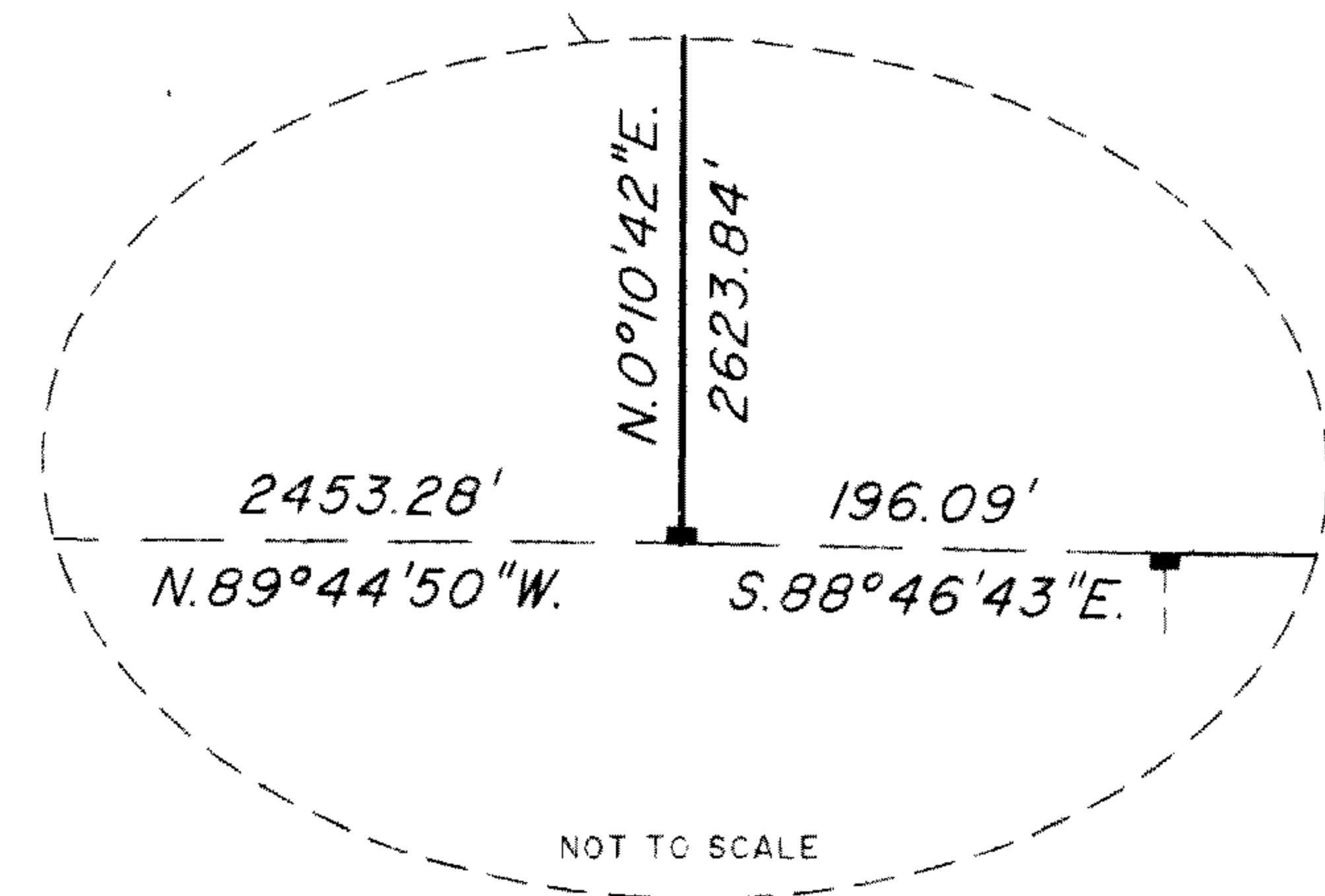
Sec. 4

Sec. 3

Sec. 2

Sec. 1

LEGAL SUBDIVISION	OFFICIAL ACRES
SECTION 34	
LOT 1	20.29
LOT 2	8.56
NW 1/4 NE 1/4	40.39
SECTION 35	
LOT 1	14.87



Scale in Feet

LEGEND	
◇	Original corner previously remonumented
◆	Original corner remonumented this survey
□	Corner previously established or reestablished
■	Corner previously established or reestablished; remonumented this survey
●	Corner established or reestablished this survey

UNITED STATES DEPARTMENT OF THE INTERIOR  
BUREAU OF LAND MANAGEMENT

Portland, Oregon

December 28, 2007

This plat is strictly conformable to the approved field notes, and the survey, having been correctly executed in accordance with the requirements of law and the regulations of this Bureau, is hereby accepted.

For the Director

*Maury J. M. Hunt*

Chief Cadastral Surveyor of Oregon