

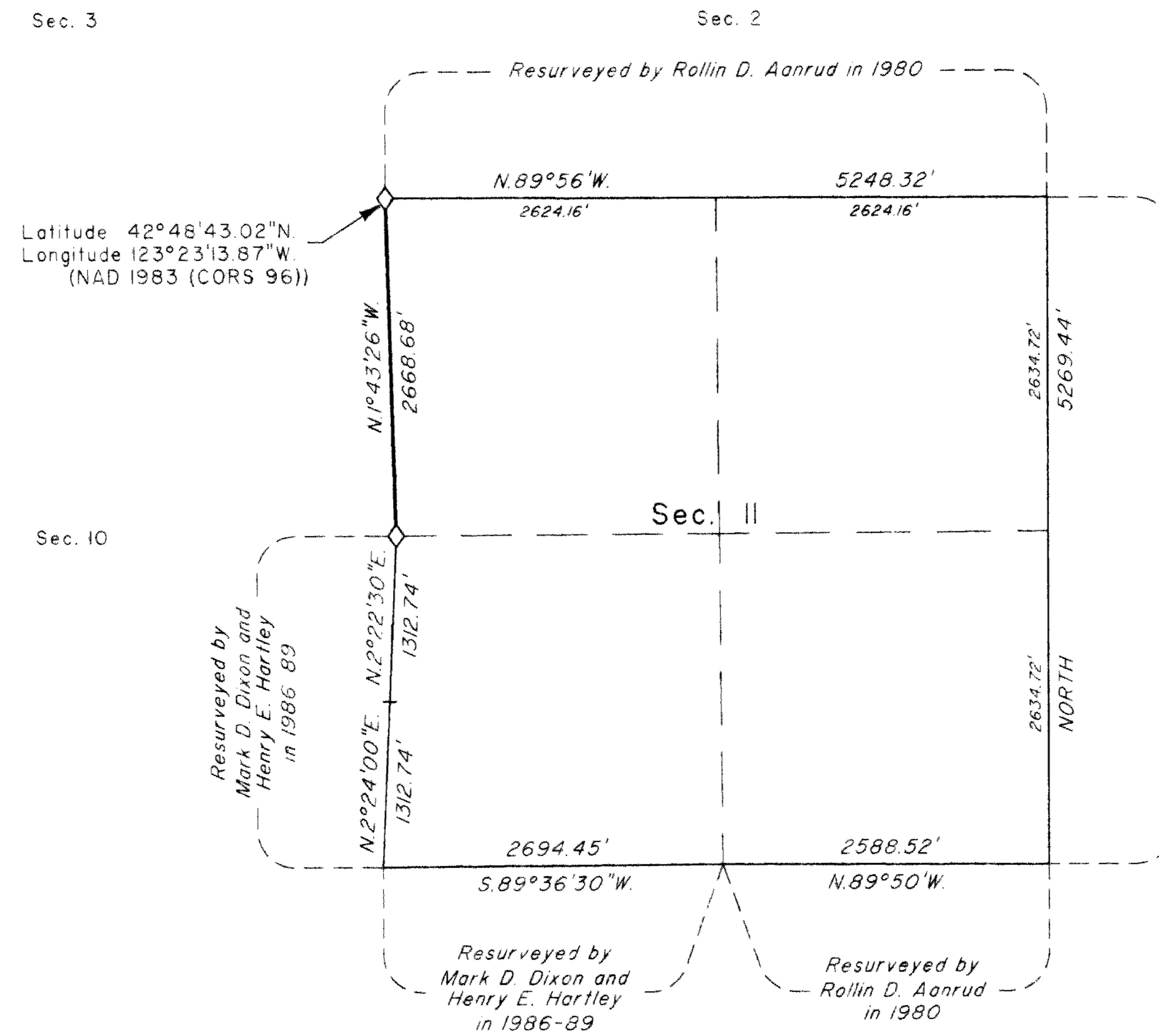
TOWNSHIP 32 SOUTH, RANGE 6 WEST, OF THE WILLAMETTE MERIDIAN, OREGON

DEPENDENT RESURVEY AND SUBDIVISION OF SECTION 21

FILED

Date: 6/4/2008 By: JC  
 This survey consists of:  
 Map: VOL 55  
 Narrative: PAGES  
 Corner Rpt: 21465-75

DOUGLAS COUNTY  
 SURVEYOR



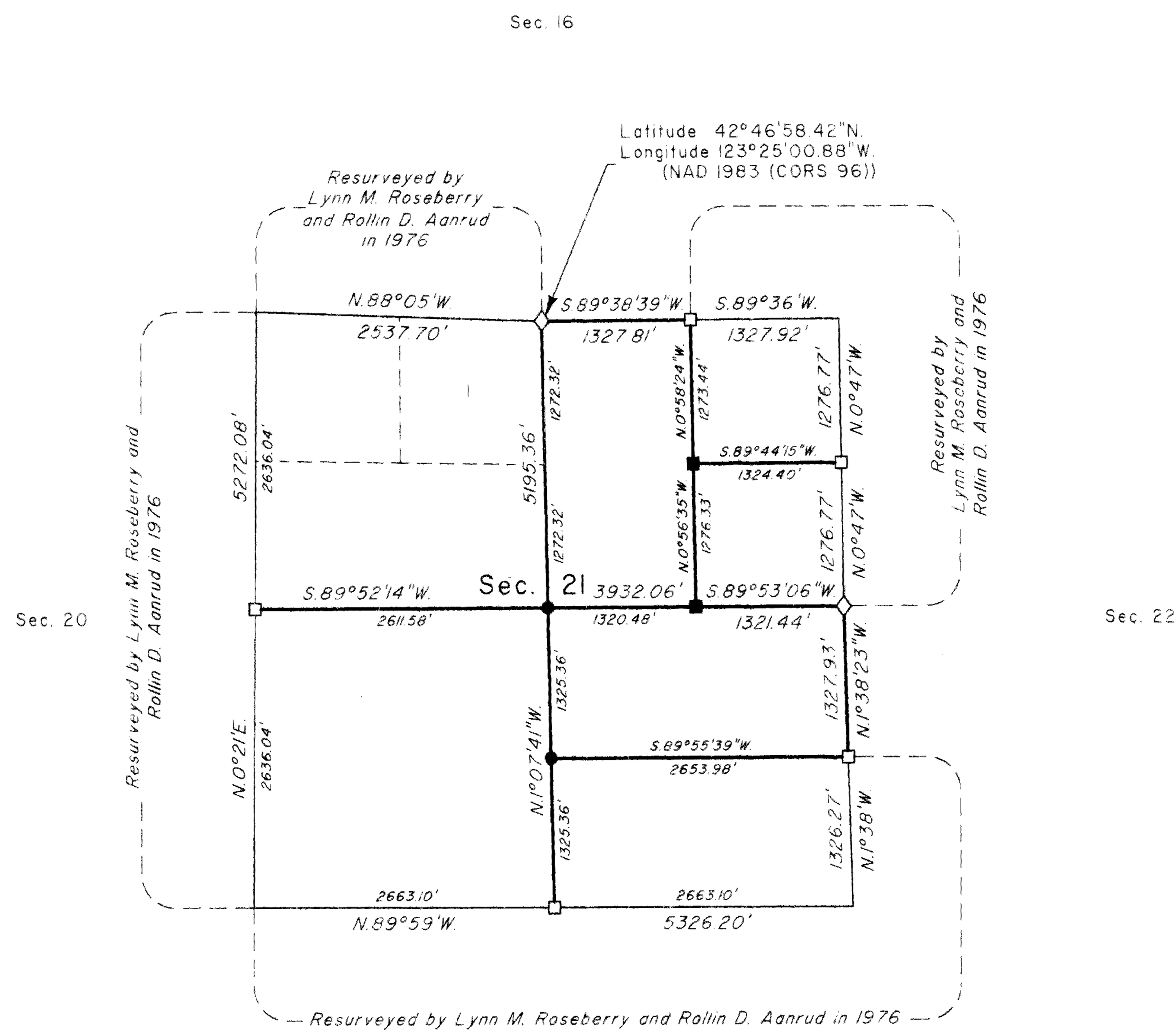
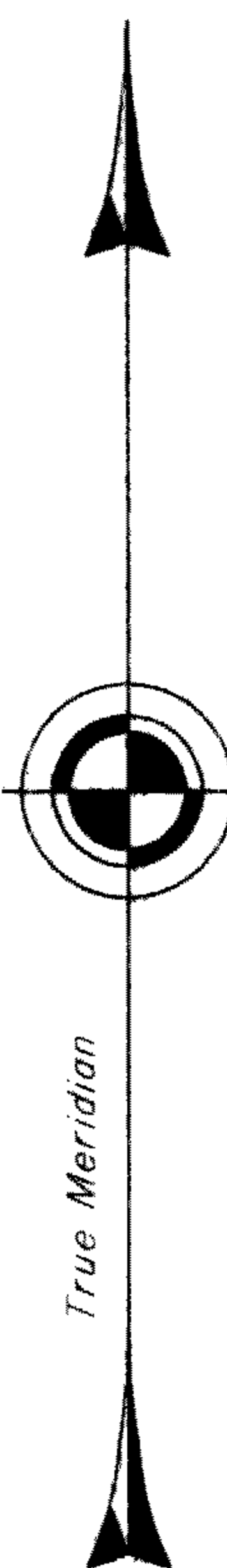
A history of surveys is contained in the field notes.

This plat represents a dependent resurvey of a portion of the subdivisional lines, T. 32 S., R. 6 W., Willamette Meridian, Oregon, designed to restore the corners in their true original locations according to the best available evidence, and the subdivision of section 21.

Measured distances and directions have been adjusted by computer software that incorporates a least squares adjustment routine. The adjusted bearings are reported to the nearest second. The adjusted distances are reported to the nearest 0.01 foot, at a project elevation of 2200 feet above sea level.

The survey was executed by Francis J. Simon, Cadastral Surveyor, beginning July 25, 2005, and completed November 9, 2005, pursuant to Special Instructions dated July 15, 2005, under Group Number 2125, Oregon.

Actual quantity acreages have been returned for the federal interest lands where indicated. The aliquot part and lot will retain its designation even though the official acreage has changed. The aliquot part of a section will continue to be subdivided by legal subdivision in accordance with the Manual. When an area has been assigned a lot number, it may be further subdivided only by a supplemental plat or another official survey. The official lottings and areas of federal interest lands not affected by this survey are as shown on the plat approved May 31, 1882, and the plat accepted August 28, 1980.



LEGAL SUBDIVISION	OFFICIAL ACRES
SECTION 21	
NW 1/4 NE 1/4	38.75
SW 1/4 NE 1/4	38.68
NE 1/4 SE 1/4	40.34
NW 1/4 SE 1/4	40.29

**LEGEND**

- ◊ Original corner previously remonumented
- Corner previously established or reestablished
- Corner previously established or reestablished; remonumented this survey
- Corner established or reestablished this survey

UNITED STATES DEPARTMENT OF THE INTERIOR  
 BUREAU OF LAND MANAGEMENT

Portland, Oregon December 21, 2007

This plat is strictly conformable to the approved field notes, and the survey, having been correctly executed in accordance with the requirements of law and the regulations of this Bureau, is hereby accepted.

For the Director

*Maury M. Hartel*

Chief Cadastral Surveyor of Oregon

