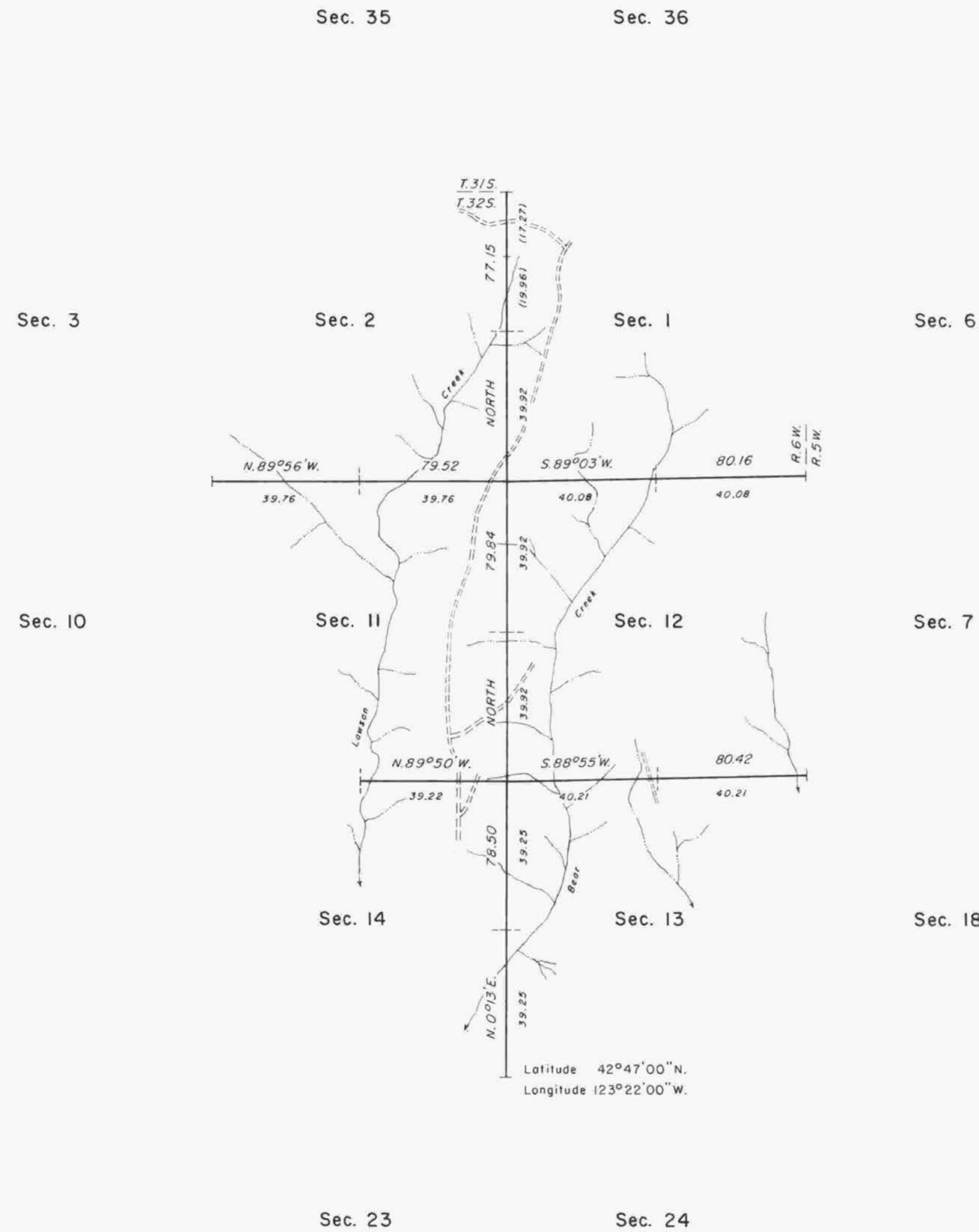


# TOWNSHIP 32 SOUTH, RANGE 6 WEST, OF THE WILLAMETTE MERIDIAN, OREGON.

## DEPENDENT RESURVEY



A history of surveys is contained in the field notes.

This plat represents a dependent resurvey of a portion of the subdivisional lines, T. 32 S., R. 6 W., Willamette Meridian, Oregon, designed to restore the corners in their true original locations according to the best available evidence.

The lottings and areas are as shown on the plat approved May 31, 1882.

The survey was executed by Rollin D. Aanrud, Cadastral Surveyor, beginning June 26, 1980 and completed August 22, 1980, pursuant to Special Instructions dated June 11, 1980, for Group No. 1018, Oregon.

Timber in this area consists of fir, pine, cedar, hemlock, oak, madrone, maple, and alder.

UNITED STATES DEPARTMENT OF THE INTERIOR  
BUREAU OF LAND MANAGEMENT  
Portland, Oregon      August 17, 1983

This plat is strictly conformable to the approved field notes, and the survey, having been correctly executed in accordance with the requirements of law and the regulations of this Bureau, is hereby accepted.

For the Director

*William W. Glenn*

Chief Cadastral Surveyor of Oregon