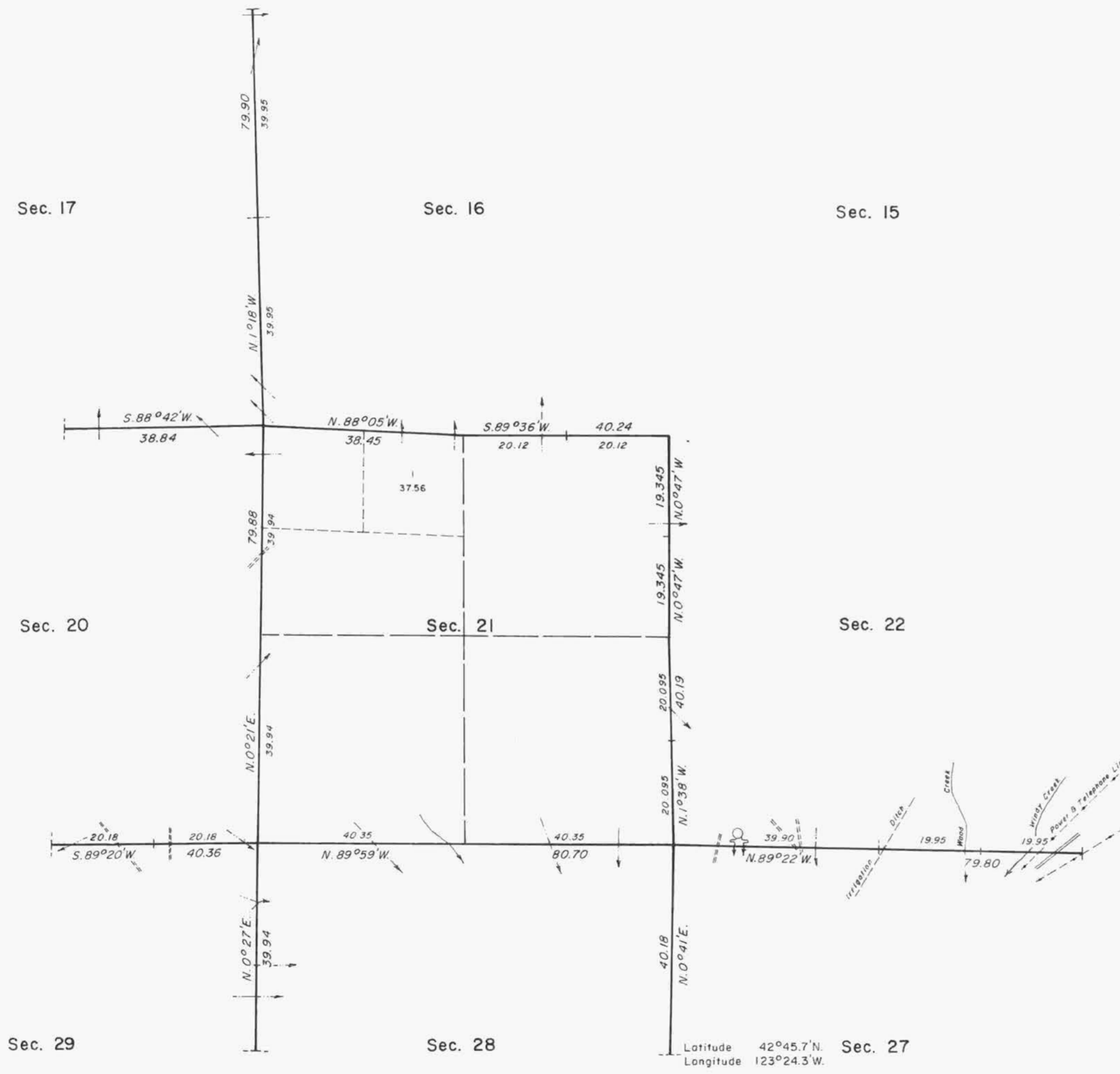


TOWNSHIP 32 SOUTH, RANGE 6 WEST, OF THE WILLAMETTE MERIDIAN, OREGON.

DEPENDENT RESURVEY



A history of surveys is contained in the field notes.

This plat represents a dependent resurvey of a portion of the subdivisional lines, designed to restore the corners in their true original locations according to the best available evidence, T. 32 S., R. 6 W., Willamette Meridian, Oregon.

Except as indicated hereon, the lottings and areas are as shown on the plat approved May 31, 1882.

Survey executed by Lynn M. Roseberry and Rollin D. Aanrud, Cadastral Surveyors, beginning August 24, 1976, and completed September 27, 1976, pursuant to Special Instructions dated July 13, 1976, for Group No. 910, Oregon.

UNITED STATES DEPARTMENT OF THE INTERIOR
BUREAU OF LAND MANAGEMENT
Denver, Colorado August 28, 1980

This plat is strictly conformable to the approved field notes, and the survey, having been correctly executed in accordance with the requirements of law and the regulations of this Bureau, is hereby accepted.

For the Director

Alan Stodd
Acting Chief, Cadastral Survey
Examination and Approval Staff



Timber in this area consists of fir, pine, cedar, hemlock, yew, oak, madrone, chinquapin, maple, and alder.

gee

LDS