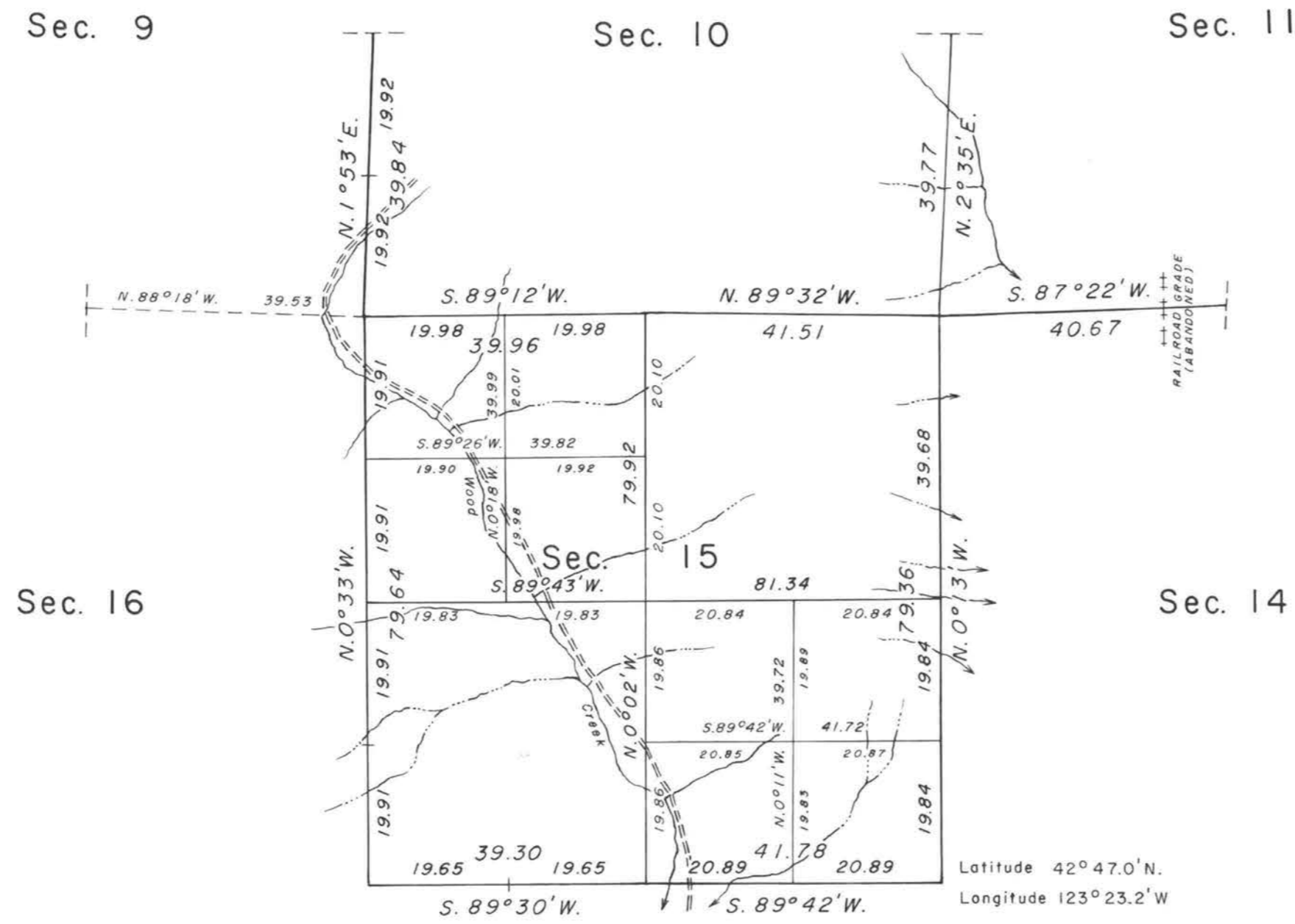


# TOWNSHIP 32 SOUTH, RANGE 6 WEST, OF THE WILLAMETTE MERIDIAN, OREGON.

## DEPENDENT RESURVEY AND SUBDIVISION OF SECTION 15



This plat represents a retracement and reestablishment of a portion of the subdivisional lines, designed to restore the corners in their true original locations according to the best available evidence, and, subdivision of section 15, T. 32 S., R. 6 W., Willamette Meridian, Oregon.

The areas are as shown on the plat approved May 31, 1882.

A portion of the subdivisional lines were surveyed by William H. Byars in 1881.

The resurvey and subdivision of section 15 was executed by Rollin D. Aanrud, Cadastral Surveyor, June 6, 1966, to March 1, 1967, under Special Instructions dated June 2, 1966, which provide for the surveys included under Group No. 616, Oregon.

UNITED STATES DEPARTMENT OF THE INTERIOR  
BUREAU OF LAND MANAGEMENT  
Washington, D. C.      January 15, 1969

This plat is strictly conformable to the approved field notes, and the survey, having been correctly executed in accordance with the requirements of law and the regulations of this Bureau, is hereby accepted.

For the Director

*R.L. Braun*

Chief, Division of Engineering



Chains  
Area Resurveyed: 640 Acres

"Suspended, October 3, 1986, see File 9600 (OR-942)."

Timber in this area consists of fir, cedar, yellow pine, white fir, madrone, alder, and chinquapin.