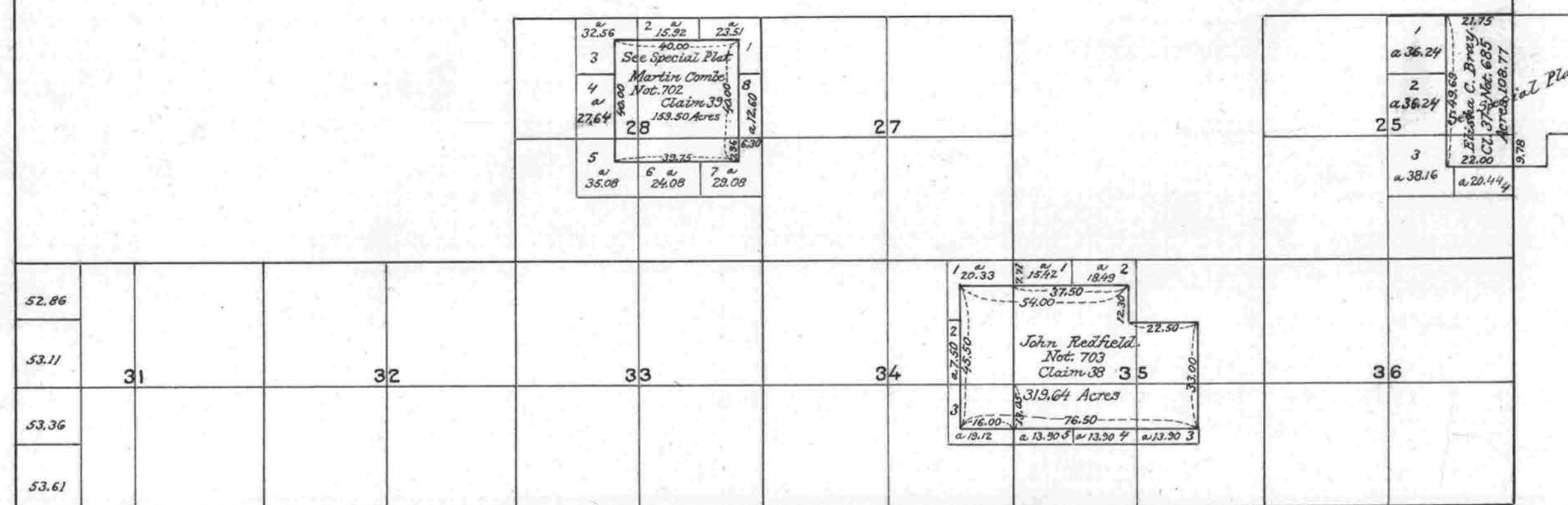


Township No. 32 South Range No. 6 West of the Willamette Meridian, Oregon.

Unsurveyed

Aggregate area of Public Lands	5227.05
Private Surveys	587.91
Deduct error in computations	2.02
Total return on Township Plat	5812.94



I certify the above to be a correct copy of the original plat on file in this Office.
U.S. Surveyor General's Office,
Portland, Oregon, December 17, 1921.

Wesley W. Cairness
Surveyor General of Oregon

Scale 40 Chains to an inch

Mean Magnetic Declination

Surveys Designated	By Whom Surveyed	Group		Amount of Surveys			When Surveyed	
		No.	Date	Mls.	chs.	lks.	Begun	Completed

The above map of Township No. 32 South of Range No. 6 West of the Willamette Meridian Oregon is strictly conformable to the field notes of the survey thereof on file in this office, which have been examined and approved.

Surveyor General's Office,
Eugene City, December 23rd, 1921

W. W. Chapman
Surveyor General of Oregon