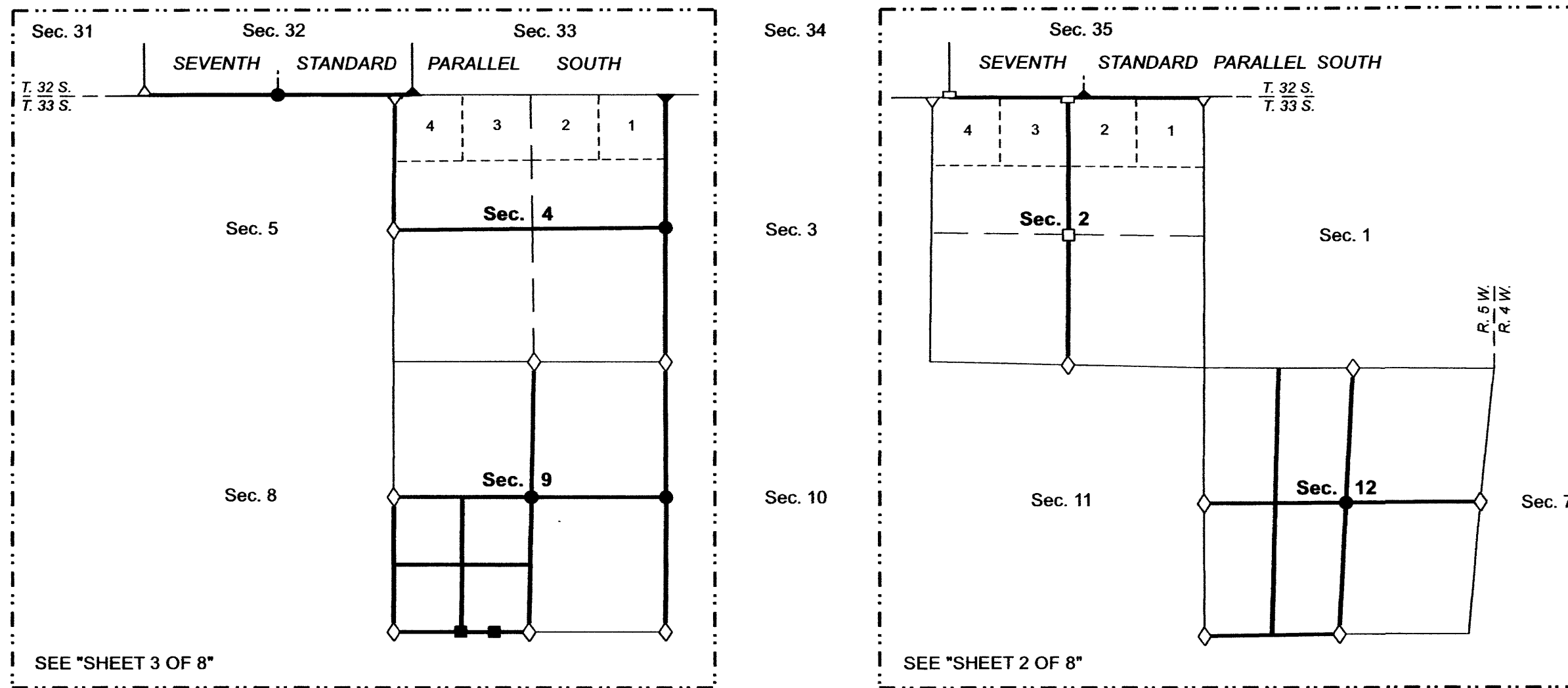


TOWNSHIP 33 SOUTH, RANGE 5 WEST, OF THE WILLAMETTE MERIDIAN, OREGON

SHEET 1 OF 8

DEPENDENT RESURVEY AND SUBDIVISION OF SECTIONS



A history of surveys, corner descriptions, and other relevant information are contained in the field notes.

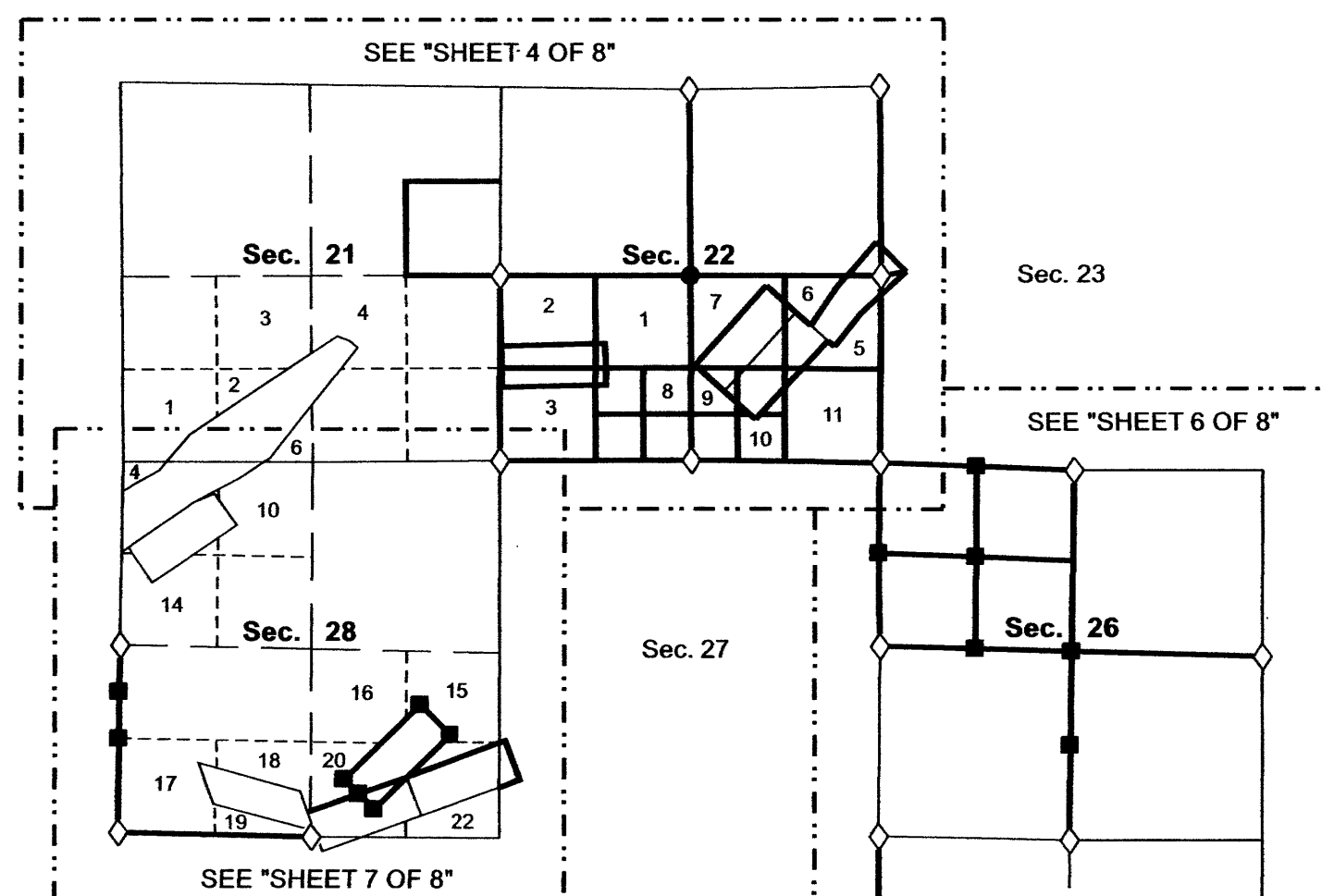
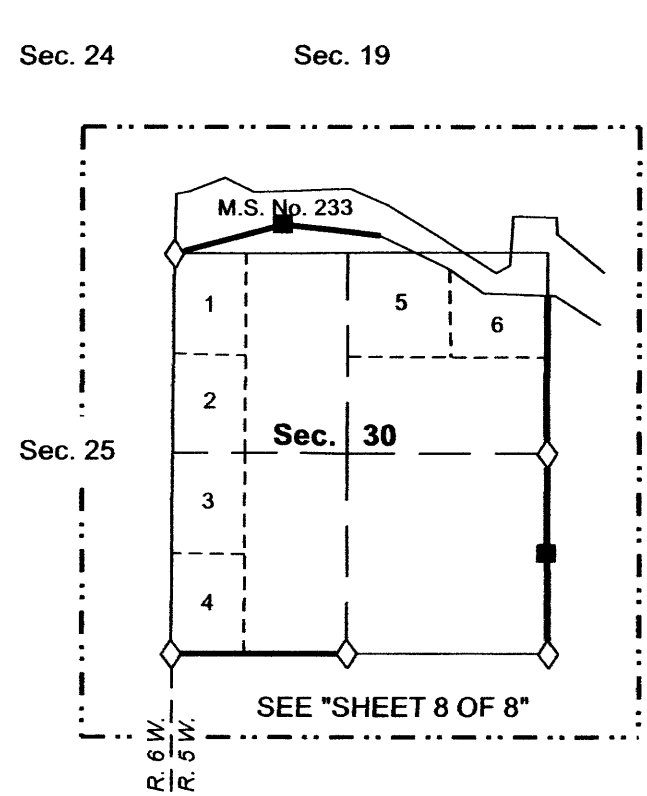
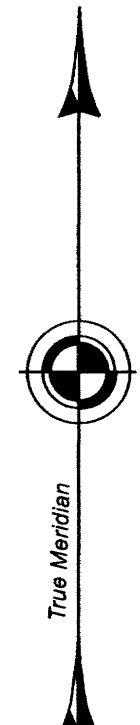
This plat represents the dependent resurvey of a portion of the north boundary (Seventh Standard Parallel South), south boundary, subdivisional lines, Mineral Survey Nos. 141, 142, 197, 233, 319, and 789, and subdivision of section lines of section 21, designed to restore the corners in their true original locations according to the best available evidence, and the subdivision of sections 2, 4, 9, 12, 22, and 26, Township 33 South, Range 5 West, Willamette Meridian, Oregon.

Official areas based on the measurements of this survey have been returned for Federal interest land where indicated. Aliquot part legal subdivisions retain their aliquot characteristics and refer to precisely the same land as that which was previously identified by its original survey. A lot can only be subdivided by survey or supplemental plat. Except as indicated hereon, the lottings and areas are as shown on the plats approved November 10, 1894 and January 29, 1897, and the plat accepted November 10, 1982.

Survey executed by Kevin G. Mulder, Cadastral Surveyor, beginning April 28, 2021, and completed November 29, 2022, pursuant to special instructions approved April 27, 2021, for Group No. 3006, Oregon.

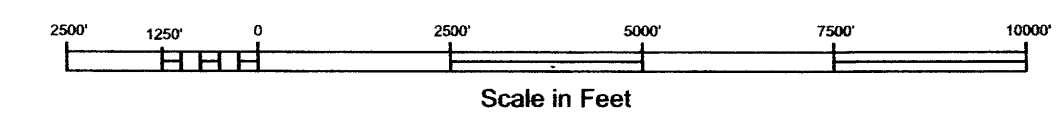
LEGAL SUBDIVISION	OFFICIAL ACRES
SECTION 9	
NW1/4 SW1/4	42.07
SECTION 12	
E1/2 NW1/4	88.82
E1/2 SW1/4	82.18
SECTION 21	
SE1/4 NE1/4	40.68
SECTION 22	
LOT 1	39.38
LOT 2	30.52
LOT 3	32.83
SECTION 26	
NE1/4 NE1/4	39.71
NW1/4 NE1/4	39.31
SW1/4 NE1/4	39.67
SE1/4 NE1/4	40.10
NE1/4 NW1/4	40.40
NW1/4 NW1/4	40.59
SW1/4 NW1/4	40.41
TOTAL AREA	636.67
FEDERAL INTEREST LAND RESURVEYED	
TOTAL AREA	129.60
FEDERAL INTEREST LAND SURVEYED	

FILED
 Date: 9/10/2024 By: JC
 This survey consists of:
 Map: PLAT 2023 (PGS 1-3 OF 6)
 Name: VOL 59
 Corner-Ref: PAGES 24101-24185
 MOST OF RESURVEY IN JOSEPHINE CO
 DOUGLAS COUNTY
 SURVEYOR



LEGEND

- ◇ Original corner previously remonumented
- ◆ Original corner remonumented this survey
- Corner previously established or reestablished
- Corner previously established or reestablished; remonumented this survey
- Corner established or reestablished this survey



UNITED STATES DEPARTMENT OF THE INTERIOR
BUREAU OF LAND MANAGEMENT

Portland, Oregon

This plat is strictly conformable to the approved field notes, and the survey, having been correctly executed in accordance with the requirements of law and the regulations of this Bureau, is hereby accepted.

For the Director
Robert W. Fend
 Chief Cadastral Surveyor of Oregon

December 15, 2023

Date

OFFICIALLY FILED: 2/7/2024