

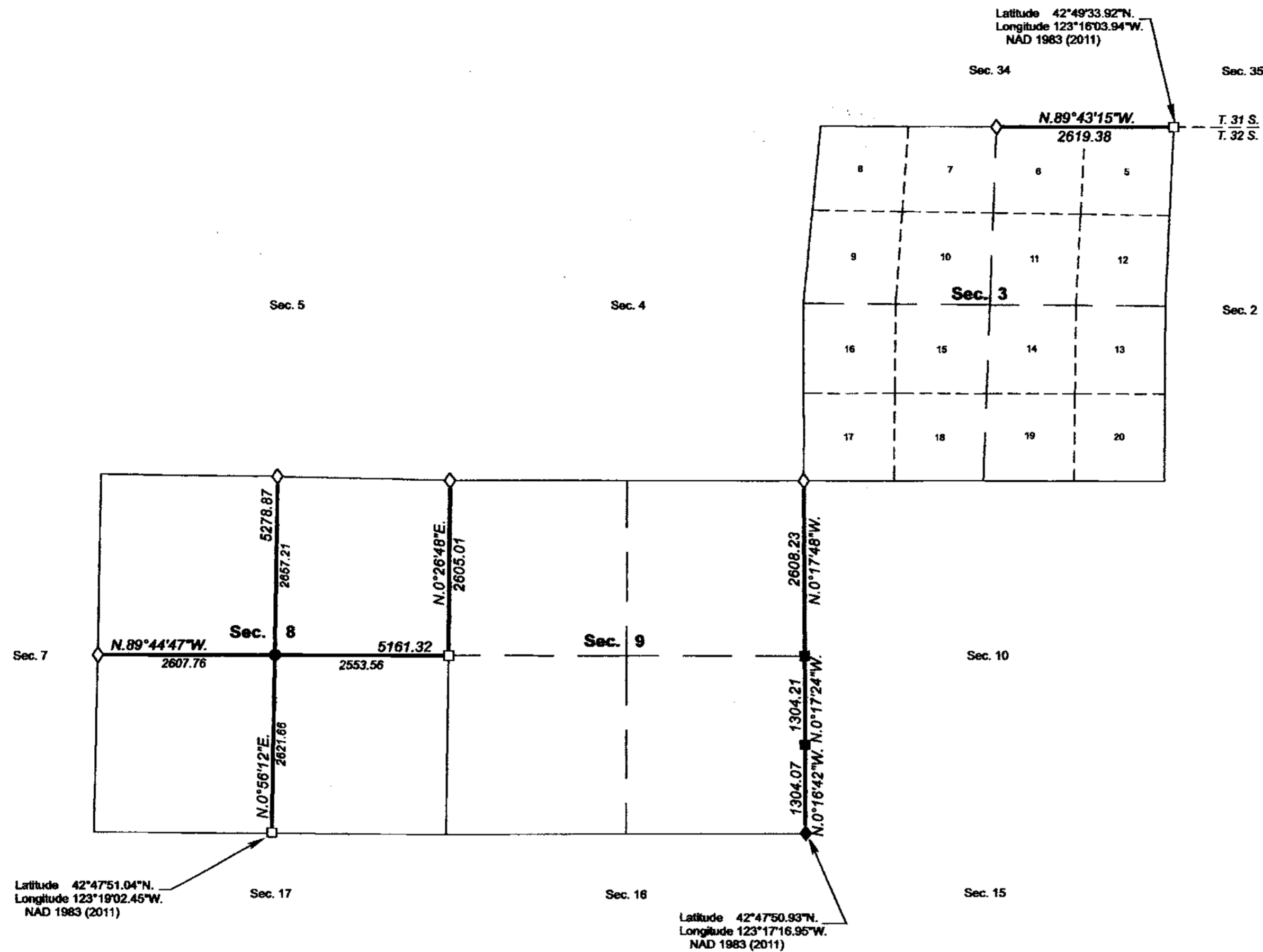
TOWNSHIP 32 SOUTH, RANGE 5 WEST, OF THE WILLAMETTE MERIDIAN, OREGON

DEPENDENT RESURVEY AND SUBDIVISION OF SECTION 8

FILED
Date: 9/29/2020 By: JC
This survey consists of:
Map: PLAT: T32-5 2020-1
Narrative: VOL 59
Corner Rpt: PGS 23749-23757

DOUGLAS COUNTY
SURVEYOR

OFFICIALLY FILED: 8/21/2020



A history of surveys, corner descriptions, and other relevant information are contained in the field notes.

This plat represents the dependent resurvey of a portion of the north boundary and subdivisional lines, designed to restore the corners in their true original locations according to the best available evidence, and the subdivision of section 8, Township 32 South, Range 5 West, Willamette Meridian, Oregon.

The lottings and areas are as shown on the plats approved April 26, 1872, and December 16, 1904 and the plat accepted July 9, 1956.

Survey executed by Kevin G. Mulder, Cadastral Surveyor, beginning July 9, 2018, and completed October 4, 2018, pursuant to special instructions approved July 2, 2018, for Group No. 2925, Oregon.

LEGEND

- ◊ Original corner previously remonumented
- ◆ Original corner remonumented this survey
- Corner previously established or reestablished
- Corner previously established or reestablished; remonumented this survey
- Corner established or reestablished this survey

UNITED STATES DEPARTMENT OF THE INTERIOR
BUREAU OF LAND MANAGEMENT

Portland, Oregon

This plat is strictly conformable to the approved field notes, and the survey, having been correctly executed in accordance with the requirements of law and the regulations of this Bureau, is hereby accepted.

For the Director

Chief Cadastral Surveyor of Oregon

July 14, 2020
Date

