

# TOWNSHIP 32 SOUTH, RANGE 5 WEST, OF THE WILLAMETTE MERIDIAN, OREGON

## DEPENDENT RESURVEY AND SUBDIVISION OF SECTION 1

FILED  
Date: 2/3/2015 By: JC  
This survey consists of:  
Map: PLAT: T32-5 2014-1  
Narrative: VOL 58  
Corner Rpt: PGS 23124-23133  
DOUGLAS COUNTY  
SURVEYOR

A history of surveys, corner descriptions, and other relevant information, are contained in the field notes.

This plat represents the dependent resurvey of a portion of the north boundary and subdivisional lines, designed to restore the corners in their true original locations according to the best available evidence, and the subdivision of section 1, Township 32 South, Range 5 West, Willamette Meridian, Oregon.

Official areas based on the measurements of this survey have been returned for Federal interest land where indicated. Aliquot part legal subdivisions retain their aliquot characteristics and refer to precisely the same land as that which was previously identified by its original survey or description. A lot can only be subdivided by survey or supplemental plat. Except as indicated hereon, the lottings and areas are as shown on the plat approved April 26, 1872.

Survey executed by Arthur R. Rambo, Cadastral Surveyor, beginning April 15, 2013, and completed May 15, 2013, pursuant to special instructions approved March 28, 2013, for Group No. 2707, Oregon.

OFFICIALLY FILED: 1/26/2015

Sec. 35

Sec. 36

Sec. 31

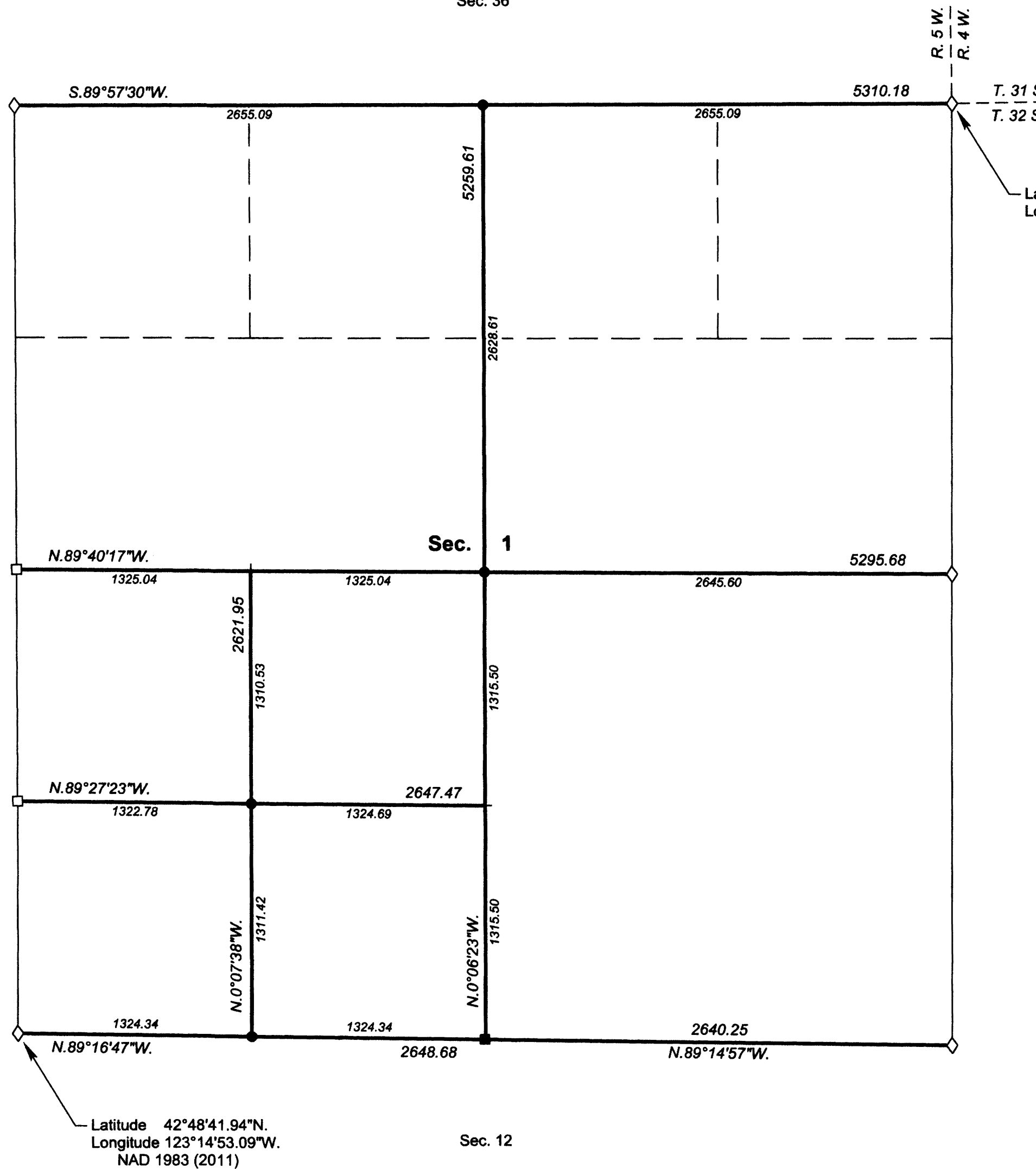
Sec. 2

Sec. 6

Sec. 11

Sec. 12

Sec. 7



Latitude 42°49'33.58\"N.  
Longitude 123°13'42.07\"W.  
NAD 1983 (2011)

Latitude 42°48'41.94\"N.  
Longitude 123°14'53.09\"W.  
NAD 1983 (2011)



LEGAL SUBDIVISION	OFFICIAL ACRES
SECTION 1	
NE1/4 SW1/4	39.93
SE1/4 SW1/4	39.93
TOTAL AREA	79.86
FEDERAL INTEREST LAND RESURVEYED	

LEGEND	
◇	Original corner previously remonumented
□	Corner previously established or reestablished
■	Corner previously established or reestablished; remonumented this survey
●	Corner established or reestablished this survey
+	Corner point calculated, no monument set

UNITED STATES DEPARTMENT OF THE INTERIOR  
BUREAU OF LAND MANAGEMENT  
Portland, Oregon

This plat is strictly conformable to the approved field notes, and the survey, having been correctly executed in accordance with the requirements of law and the regulations of this Bureau, is hereby accepted.

For the Director  
*Mary J. M. Hartzel*  
Chief Cadastral Surveyor of Oregon

November 7, 2014  
Date

