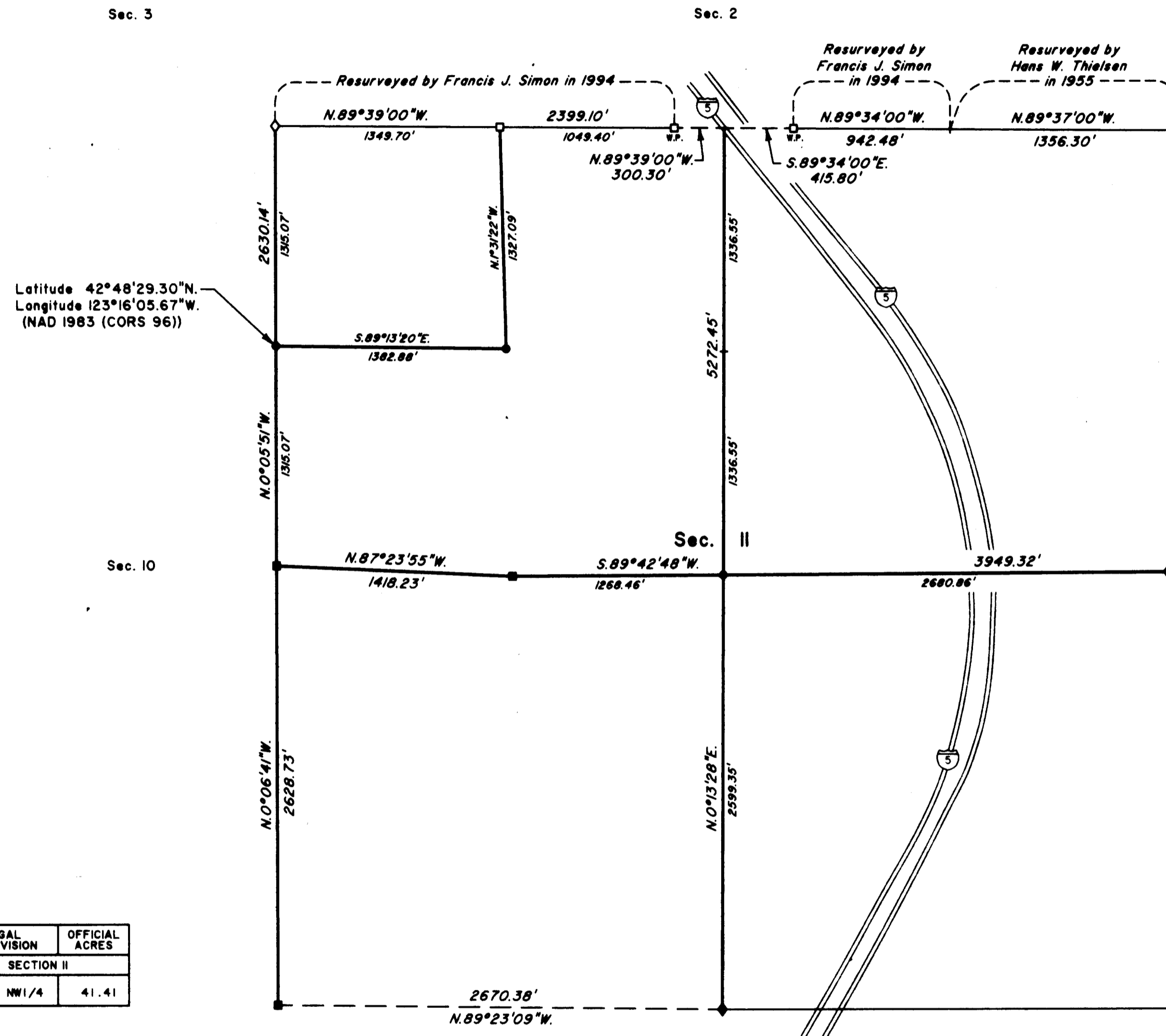


TOWNSHIP 32 SOUTH, RANGE 5 WEST, OF THE WILLAMETTE MERIDIAN, OREGON

SHEET 1 OF 2

DEPENDENT RESURVEY AND SUBDIVISION OF SECTIONS II, 18, AND 19



A history of surveys is contained in the field notes.

This plat represents a dependent resurvey of a portion of the west boundary and subdivisional lines, T. 32 S., R. 5 W., Willamette Meridian, Oregon, designed to restore the corners in their true original locations according to the best available evidence, and the subdivision of sections II, 18, and 19.

Measured distances and directions have been adjusted by computer software that incorporates a least square adjustment routine. The adjusted bearings and distances are reported to the nearest second and 0.01 feet.

Actual quantity acreages have been returned for federal interest lands where indicated. The aliquot parts and lots will retain their designation even though the official acreage has changed. The aliquot part of a section will continue to be subdivided by legal subdivision in accordance with the Manual. When an area has been assigned a lot number, it may be further subdivided only by a supplemental plat or another official survey. The official lottings and areas of federal interest lands not affected by this survey are as shown on the plats approved March 31, 1856, and July 17, 1902.

The survey was executed by Arthur R. Rambo and Francis J. Simon, Cadastral Surveyors, beginning May 18, 2006 and completed February 5, 2007, pursuant to Special Instructions dated May 4, 2006, under Group Number 2143, Oregon.

LEGEND

- ◊ Original corner previously remonumented
- ◆ Original corner remonumented this survey
- Corner previously established or reestablished
- Corner previously established or reestablished; remonumented this survey
- Corner established or reestablished this survey

UNITED STATES DEPARTMENT OF THE INTERIOR
BUREAU OF LAND MANAGEMENT

Portland, Oregon

This plat is strictly conformable to the approved field notes, and the survey, having been correctly executed in accordance with the requirements of law and the regulations of this Bureau, is hereby accepted.

For the Director

Mary J. M. Hartzel

Chief Cadastral Surveyor of Oregon

March 16, 2009

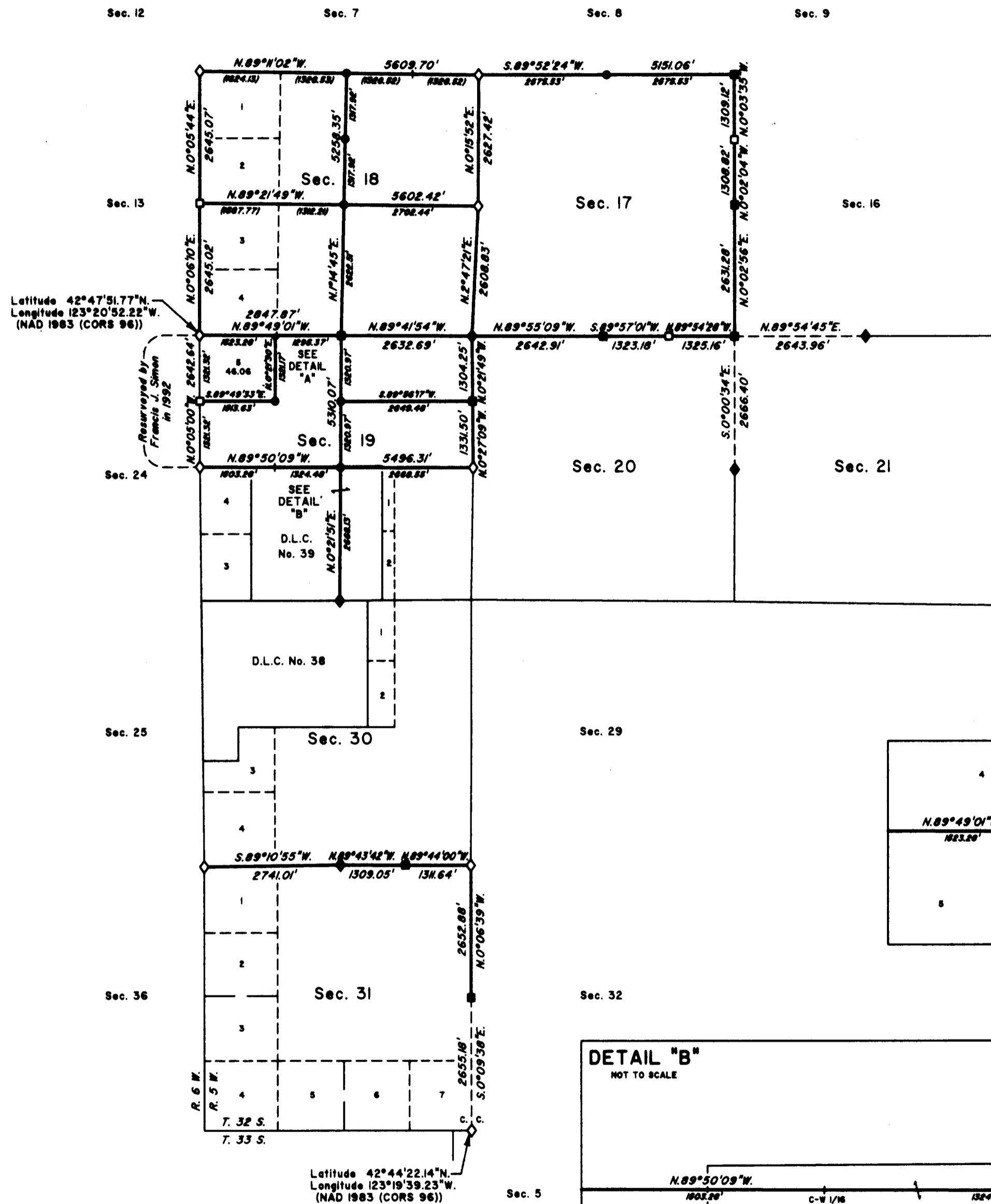
Date



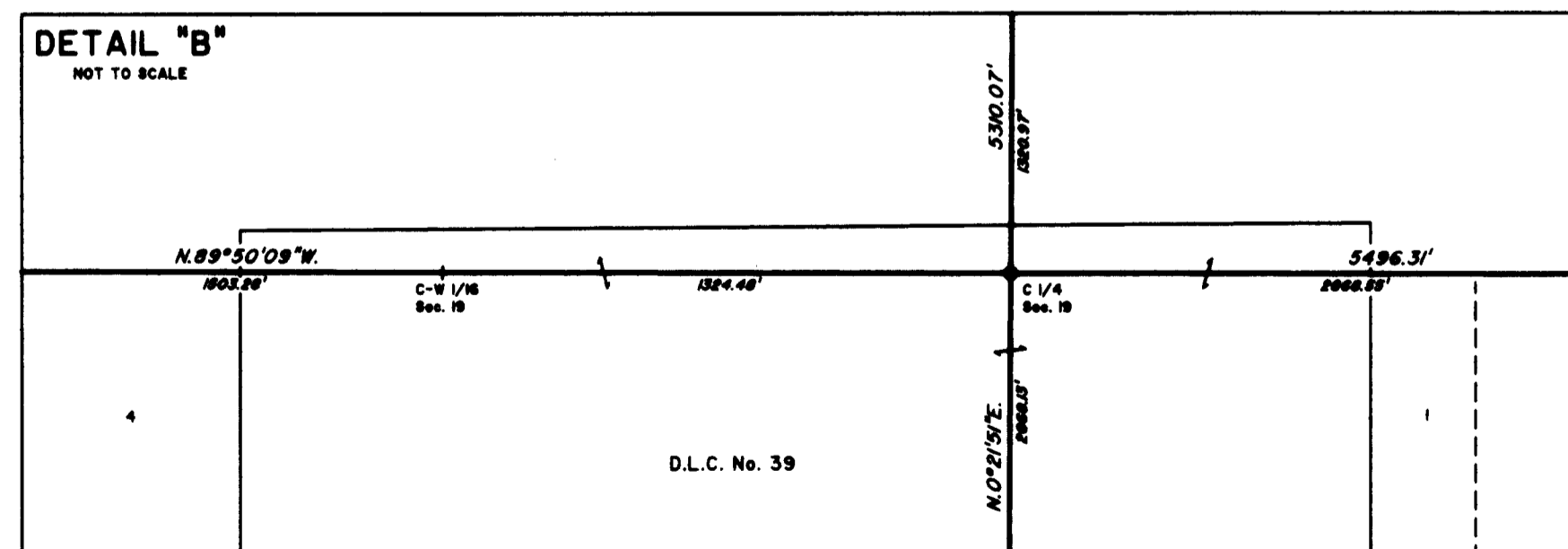
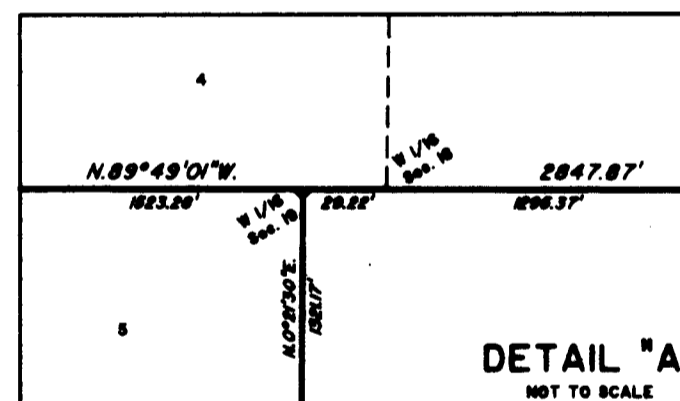
TOWNSHIP 32 SOUTH, RANGE 5 WEST, OF THE WILLAMETTE MERIDIAN, OREGON

SHEET 2 OF 2

DEPENDENT RESURVEY AND SUBDIVISION OF SECTIONS II, 18, AND 19



| LEGAL SUBDIVISION | OFFICIAL ACRES |
|-------------------|----------------|
| SECTION 17 | |
| NE 1/4 NE 1/4 | 38.87 |
| NW 1/4 NE 1/4 | 38.90 |
| SW 1/4 NE 1/4 | 39.18 |
| SE 1/4 NE 1/4 | 39.15 |
| NE 1/4 NW 1/4 | 38.70 |
| NW 1/4 NW 1/4 | 38.73 |
| SW 1/4 NW 1/4 | 38.55 |
| SE 1/4 NW 1/4 | 38.52 |
| NE 1/4 SW 1/4 | 38.65 |
| NW 1/4 SW 1/4 | 38.55 |
| SW 1/4 SW 1/4 | 39.23 |
| SE 1/4 SW 1/4 | 39.34 |
| NE 1/4 SE 1/4 | 39.56 |
| NW 1/4 SE 1/4 | 39.48 |
| SW 1/4 SE 1/4 | 39.73 |
| SE 1/4 SE 1/4 | 39.82 |
| SECTION 18 | |
| NE 1/4 NE 1/4 | 40.27 |
| SW 1/4 NE 1/4 | 40.68 |
| SE 1/4 NE 1/4 | 40.61 |
| NE 1/4 SE 1/4 | 40.23 |
| NW 1/4 SE 1/4 | 40.35 |
| SW 1/4 SE 1/4 | 39.82 |
| SE 1/4 SE 1/4 | 39.70 |
| SECTION 19 | |
| NE 1/4 NE 1/4 | 39.66 |
| NW 1/4 NE 1/4 | 39.93 |



LEGEND

- ◊ Original corner previously remonumented
- ◆ Original corner remonumented this survey
- ◻ Corner previously established or reestablished
- Corner previously established or reestablished; remonumented this survey
- Corner established or reestablished this survey

UNITED STATES DEPARTMENT OF THE INTERIOR
BUREAU OF LAND MANAGEMENT

Portland, Oregon

This plat is strictly conformable to the approved field notes, and the survey, having been correctly executed in accordance with the requirements of law and the regulations of this Bureau, is hereby accepted.

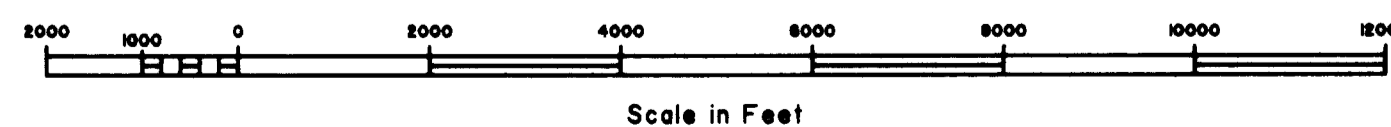
For the Director

Mary J. M. Hunt

Chief Cadastral Surveyor of Oregon

March 16, 2009

Date



Scale in Feet