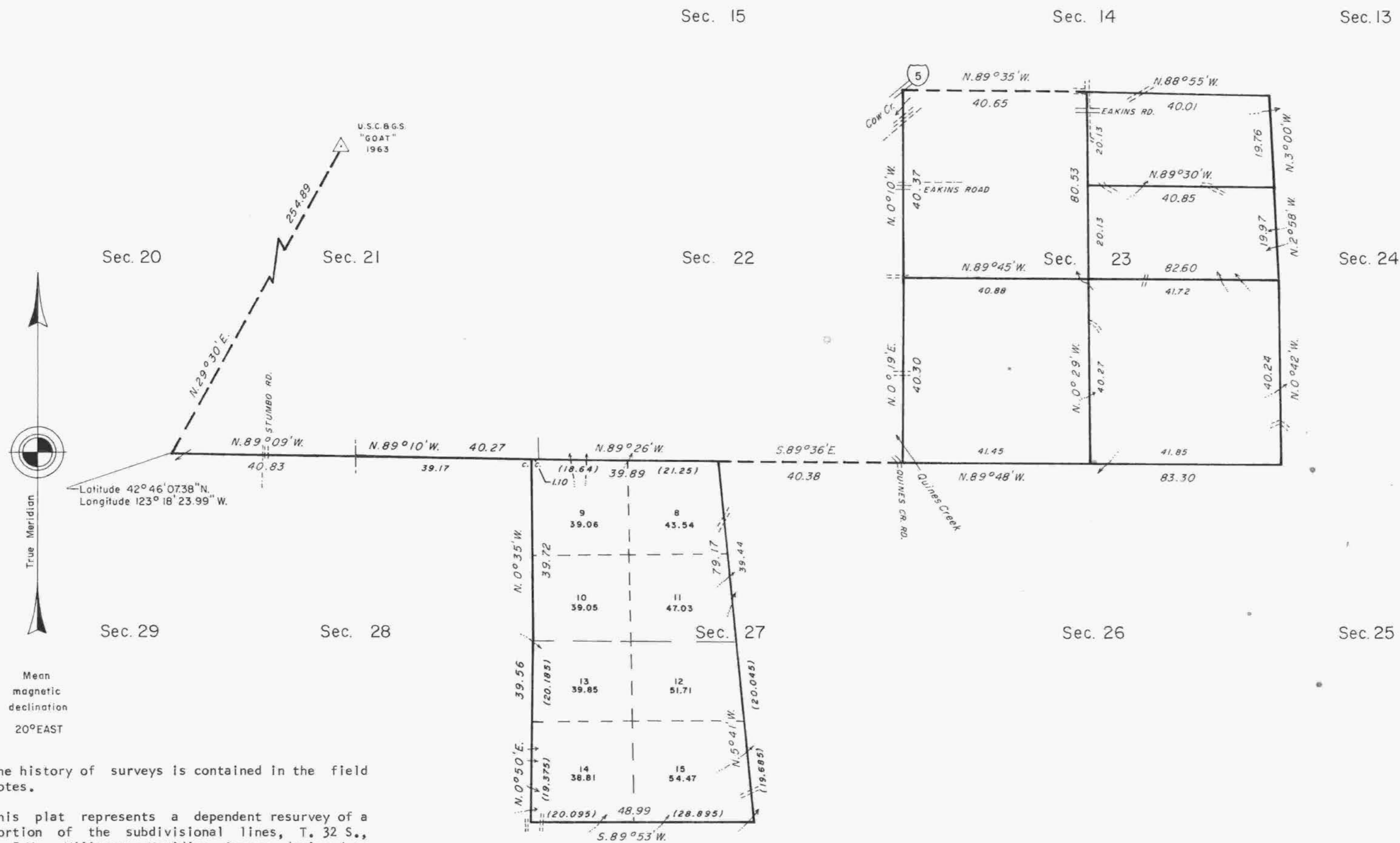


# TOWNSHIP 32 SOUTH, RANGE 5 WEST, OF THE WILLAMETTE MERIDIAN, OREGON

## DEPENDENT RESURVEY AND SUBDIVISION OF SECTIONS



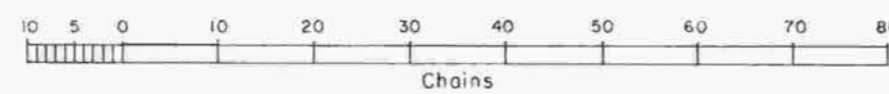
The history of surveys is contained in the field notes.

This plat represents a dependent resurvey of a portion of the subdivisional lines, T. 32 S., R. 5 W., Willamette Meridian, Oregon, designed to restore the corners in their true original locations according to the best available evidence, and the subdivision of sections 23 and 27.

Except as shown hereon, the lottings and areas are as shown on the plats approved March 31, 1856, April 26, 1872, and July 17, 1902.

The survey was executed by Virgil L. Stanger, Cadastral Surveyor, beginning May 23, 1983, and completed August 31, 1983, pursuant to Special Instructions dated March 28, 1983, under Group Number 1145, Oregon.

Timber in this area consists of fir, cedar, maple, pine, dogwood, madrone, ash, alder and cottonwood.



UNITED STATES DEPARTMENT OF THE INTERIOR  
BUREAU OF LAND MANAGEMENT  
Portland, Oregon March 7, 1986

This plat is strictly conformable to the approved field notes, and the survey, having been correctly executed in accordance with the requirements of law and the regulations of this Bureau, is hereby accepted.

For the Director

*William W. Glenn*  
Chief Cadastral Surveyor of Oregon