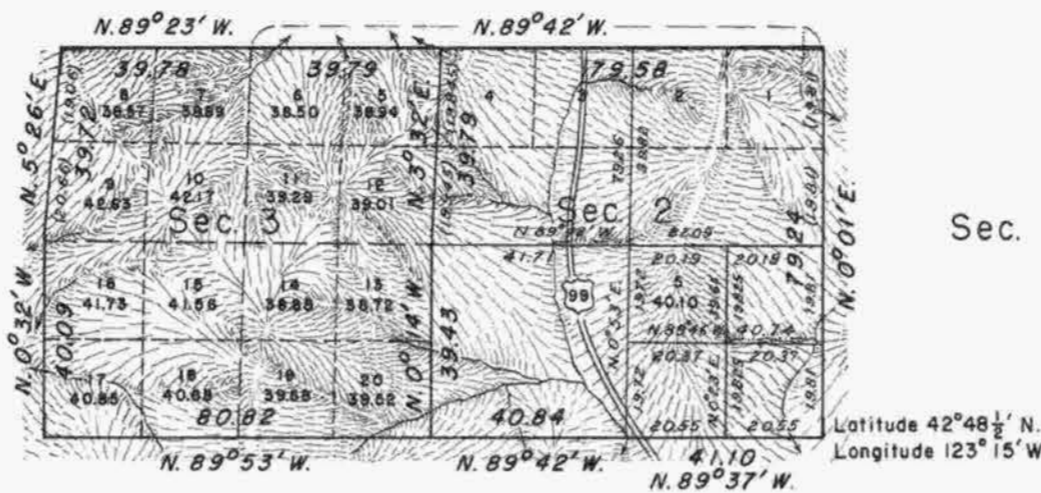


TOWNSHIP 32 SOUTH, RANGE 5 WEST, OF THE WILLAMETTE MERIDIAN, OREGON.

DEPENDENT RESURVEY AND PARTIAL SUBDIVISION



Sec. 4
 Sec. 3
 Sec. 2
 Sec. 1
 Sec. 10
 Sec. 11

Surveyed by Oscar F. Thiel in 1901.

Surveyed by W. H. Byars in 1871.

Surveyed by Lake and Hyde in 1855.

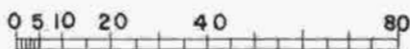
Surveyed by Lake and Hyde in 1856.

Dependent resurvey of a portion of the subdivisional lines and partial subdivision of section 2, T. 32 S., R. 5 W., W. M., Oregon, executed by Hans W. Thielsen, October 5 to November 29, 1955 under special instructions dated August 17, 1955, which provide for the surveys included under Group No. 320, Oregon.

True Meridian

Mean Magnetic Declination
 19½° East

Timber in this area consists of fir, maple, cedar, and madrona with some ash along the streams.



Scale in Chains

Area resurveyed: 1,279.34 acres

This plat represents a retracement and reestablishment of a portion of the subdivisional lines designed to restore the corners in their true locations according to the best available evidence; and, excepting as new or modified vacant subdivisions are shown hereon, the lottings and areas are as shown on the plats approved April 26, 1872, July 17, 1902, and Dec. 16, 1904.

Portions of subdivisional lines surveyed by Lake and Hyde in 1855, W. H. Byars in 1871, and O. F. Thiel in 1901 and 1904.

North boundary surveyed by Lake and Hyde in 1856.

Dependent resurvey of a portion of the subdivisional lines and partial subdivision of section 2, T. 32 S., R. 5 W., W. M., Oregon, executed by Hans W. Thielsen, October 5 to November 29, 1955 under special instructions dated August 17, 1955, which provide for the surveys included under Group No. 320, Oregon.

UNITED STATES DEPARTMENT OF THE INTERIOR
 BUREAU OF LAND MANAGEMENT
 Washington, D. C. July 9, 1956

This plat is strictly conformable to the approved field notes, and the survey, having been correctly executed in accordance with the requirements of law and the regulations of this Bureau, is hereby accepted.

For the Director

Cadastral Engineering Staff Officer