

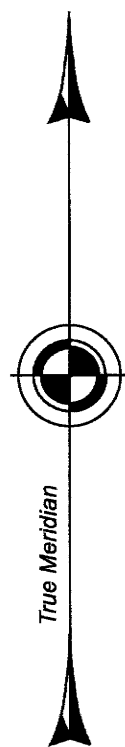
FILED

Date: 2/24/2022 By: JC
This survey consists of:
Map: PLAT: T32-4 2021-1
VOL. 59 PGS 23931-23932
Corner Rpt: NO SEPARATE LINENOTES
ALL INFORMATION IS ON THE PLAT

TOWNSHIP 32 SOUTH, RANGE 4 WEST, OF THE WILLAMETTE MERIDIAN, OREGON

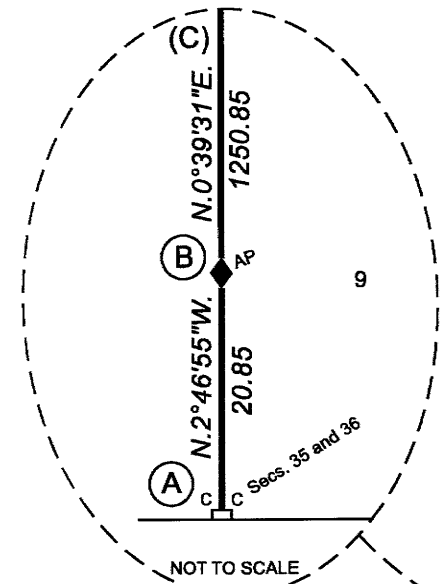
SHEET 1 OF 2

DEPENDENT RESURVEY



Latitude 42°44'54.21"N.
Longitude 123°07'57.14"W.
NAD 1983 (2011)

Latitude 42°45'21.36"N.
Longitude 123°07'21.00"W.
NAD 1983 (2011)



Sec. 35

Sec. 36

Sec. 31

Sec. 30

T. 32 S.
T. 33 S.

SEVENTH

STANDARD

PARALLEL

SOUTH

Sec. 2

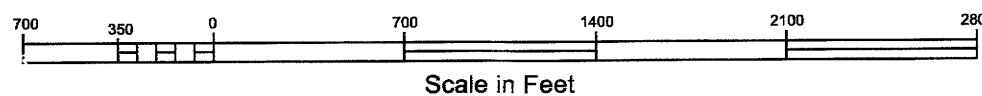
Sec. 1

I, Ernest Q. Lundeen, Cadastral Surveyor, HEREBY CERTIFY upon honor, that in pursuance of special instructions bearing the approval date of the 31st day of May, 2018, and the assignment instructions bearing the date of the 31st day of May, 2018, I have dependently resurveyed a portion of the subdivisional lines, Township 32 South, Range 4 West, Willamette Meridian, Oregon, which is represented upon this plat as having been executed by me and under my direction; and that said survey has been made in strict conformity with said special instructions, the Manual of Surveying Instructions, and in the specific manner described on this plat.

Ernest Q. Lundeen
Cadastral Surveyor

February 22, 2021
Date

LEGEND	
◇	Original corner previously remonumented
◆	Original corner remonumented this survey
□	Corner previously established or reestablished
■	Corner previously established or reestablished; remonumented this survey



This plat constitutes the entire record of the dependent resurvey of a portion of the subdivisional lines, designed to restore the corners in their true original locations according to the best available evidence, Township 32 South, Range 4 West, Willamette Meridian, Oregon.

The history of official surveys pertaining to this survey is on Sheet 2.

The directions of the lines are based on the true meridian as determined by Global Positioning Systems (GPS) techniques and carried forward by sustained angulation using conventional survey techniques. All measurements along the lines were derived through the use of conventional survey techniques. Measured distances and directions have been adjusted by computer software that incorporates a least squares adjustment routine. The adjusted mean bearings and mean horizontal ground elevation distances are reported to the nearest second and 0.01 foot.

Except as indicated hereon, the lottings and areas are as shown on the plat approved March 25, 1898.

Preliminary to the resurvey, the lines of the official original surveys and resurveys were retraced and a search was made for all corners, lines, other calls of record, and where available, collateral evidence of local surveys and corners. Identified corners were perpetuated in their original positions. The retracement data was thoroughly verified and only the true line field data are given hereon.

A magnet in a white plastic case was deposited at the base of each stainless steel post, and each new bearing tree has a 2 1/2 inch x 1/4 inch magnetic nail (Mag Nail) driven at the base on right side center, unless otherwise noted in the corner description. Only those lines which represent the Bureau of Land Management (BLM) property lines were posted with aluminum angle posts, 5 feet long, 1 inch x 1 inch, blazed, painted, and tagged with BLM boundary signs.

The geographic positions shown hereon were determined by ties from temporary GPS control points utilizing dual frequency, carrier phase GPS receivers, and processed using the National Geodetic Survey's Online Positioning User Service (OPUS).

The survey was executed in accordance with the specifications set forth in the Manual of Surveying Instructions (2009), and the special instructions approved May 31, 2018, for Group No. 2916, Oregon, by Ernest Q. Lundeen, Cadastral Surveyor, beginning June 14, 2018 and completed November 15, 2018. He was assisted by Larry Judd, Cadastral Surveyor, and Dale A. Mustain and Carl S. Vanorden, Surveying Technicians.

UNITED STATES DEPARTMENT OF THE INTERIOR
BUREAU OF LAND MANAGEMENT

Portland, Oregon

The survey represented by this plat, having been correctly executed in accordance with the requirements of law and the regulations of this Bureau, is hereby accepted.

For the Director
Mary J. M. Hunt
Chief Cadastral Surveyor of Oregon

March 24, 2021
Date

OFFICIALLY FILED: 6/21/2021

FILED

Date: 2/24/2022 By: JC
This survey consists of:
Map: PLAT: T32-4 2021-1
VOL. 59 PGS 23931-23932
Corner Rpt: NO SEPARATE LINES NOTES
ALL INFORMATION IS ON THE PLAT

TOWNSHIP 32 SOUTH, RANGE 4 WEST, OF THE WILLAMETTE MERIDIAN, OREGON

SHEET 2 OF 2

DEPENDENT RESURVEY

DOUGLAS COUNTY
SURVEYOR

(A) The closing cor. of secs. 35 and 36, on the S. bdy. of the Tp. (Seventh Standard Parallel South), reported by Roseberry and Aanrud in 1975, monumented with an iron post, 2 1/2 ins. diam., firmly set, projecting 8 ins. above ground, with brass cap mkd.

T 32 S R 4 W
C | C
S 35 S 36

S 2
T 33 S
1975

from which bearing trees reported by Roseberry and Aanrud

A cedar, 11 ins. diam., bears N. 70 3/4° E., 31.0 ft. dist., with a healed blaze. (Record, N. 73° E.)

A fir, 21 ins. diam., bears N. 52 1/2° W., 57.1 ft. dist., with a healed blaze. (Record, N. 51 1/2° W.)

(C) The 80 1/16 sec. cor. of secs. 35 and 36, established by Boyden, RLS No. 7, in 1950, and is accepted as the cor., determined at record bearing and distance from a bearing tree mkd. by Boyden.

A cedar, 13 ins. diam., bears S. 48° E., 12.9 ft. dist., with a healed double blaze.

At the corner point

Set a stainless steel post, 28 ins. long, 2 1/2 ins. diam., 24 ins. in the ground, in a collar of stone with brass cap mkd.

80
S 35 S 36
1/16
2018

and a new bearing tree

A cedar, 7 ins. diam., bears N. 76 1/4° W., 16.6 ft. dist., mkd. X at breast height and BT at the base.

(E) The cor. of secs. 25 and 36 only, on the E. bdy. of the Tp., perpetuated by the Douglas County Surveyor's Office in 1969, as shown on the Douglas County Surveyor's Office renewal record in T. 32 S., R. 4 W., point identifier No. 700200; monumented with an iron post, 1 1/2 ins. diam., firmly set, projecting 12 ins. above a mound of stone, 3 ft. base, 2 ft. high with brass cap mkd.

COUNTY SURVEYORS OFFICE

T 32 S
R S 25 | R
4 | S 30 3
W S 36 | W
1969

from which original bearing trees

A fir, 31 ins. diam., bears S. 73 1/4° W., 21.8 ft. dist., with no marks visible on partially healed blaze. (Record, S. 75° W.)

A pine, 22 ins. diam., bears N. 3° W., 63.3 ft. dist., with no mark visible on partially healed blaze. (Record, N. 1° W., 68.6 ft.)

(B) The amended closing corner of secs. 35 and 36, determined at record bearing and distance from original bearing trees reported by Roseberry and Aanrud in 1975;

A cedar, 58 ins. diam., bears N. 60° E., 29.7 ft. dist., with a healed blaze.

A fir, 54 ins. diam., bears N. 12° W., 18.5 ft. dist., with a healed blaze.

At the corner point

Set a stainless steel post, 28 ins. long, 2 1/2 ins. diam., 27 ins. in the ground, in a collar of stone, with brass cap mkd.

AP
T 32 S R 4 W
S 35 S 36
2018

(D) The 1/4 sec. cor. of secs. 35 and 36, reported by Roseberry and Aanrud in 1975, monumented with an iron post, 2 1/2 ins. diam., firmly set, projecting 12 ins. above ground in a collar of stone with brass cap mkd.

1/4
S 35 S 36
T 32 S R 4 W
1959

from which bearing trees reported by Roseberry and Aanrud

A pine, 17 ins. diam., bears N. 46° E., 56.1 ft. dist., with illegible scribe marks visible on partially healed blaze.

A pine, 41 ins. diam., bears S. 75° W., 11.2 ft. dist., with no marks visible on partially healed blaze. (Original)

(F) The 1/4 sec. cor. of secs. 25 and 36, perpetuated by the Douglas County Surveyor's Office in 1970, as shown on the Douglas County Surveyor's Office renewal record in T. 32 S., R. 4 W., point identifier No. 640200; monumented with an iron post, 1 1/2 ins. diam., firmly set, projecting 18 ins. above ground in a collar stone with brass cap mkd.

COUNTY SURVEYORS OFFICE

T 32 S
DOUG. CO.
S 25
1/4
S 36
JACK. CO.
R 4 W
1970

from which the remains of an original bearing tree

A fir snag, 32 ins. diam., bears N. 9° W., 35.0 ft. dist., with illegible scribe marks visible on rotted blaze.

and bearing trees mkd. by the Douglas County Surveyor's Office

A fir, 24 ins. diam., bears S. 56 1/4° E., 20.4 ft. dist., with a healed blaze.

A fir, 19 ins. diam., bears N. 75 1/2° W., 5.4 ft. dist., with a partially healed upper blaze marked for line and lower healed double blaze.

The history of official surveys pertaining to this survey is as follows:

In 1879, Albert O. Eckelson, U.S. Deputy Surveyor, surveyed the south boundary (Seventh Standard Parallel South), as shown on the official plat of survey approved January 14, 1880.

In 1893, Edward F. Sharp, U.S. Deputy Surveyor, retraced a portion of the north boundary (Seventh Standard Parallel South), as shown on the official plat of survey for T. 33 S., R. 4 W., approved July 26, 1894.

In 1897, Winfield S. Chapman and Carl S. Nicklin, U.S. Deputy Surveyors, resurveyed the south boundary (Seventh Standard Parallel South) and surveyed a portion of the east boundary and subdivisional lines, as shown on the official plat of survey approved March 25, 1898.

In 1959, Hans W. Thielsen, Cadastral Surveyor, resurveyed a portion of the east boundary and remonumented certain original corner points, as shown on the official plat of survey accepted November 3, 1960.

In 1975, Lynn M. Roseberry and Rollin D. Aanrud, Cadastral Surveyors, resurveyed the south boundary (Seventh Standard Parallel South) and a portion of the subdivisional lines, as shown on the official plat of survey accepted May 21, 1982.

The following local survey filed in the Jackson County Surveyor's Office is referred to in a subsequent corner description and is referenced by surveyor's last name, Professional Land Surveyor (PLS) No., and year.

Date	Name and Registration Number	File Number
1950	C.Z. Boyden, PLS No. 7	252

UNITED STATES DEPARTMENT OF THE INTERIOR
BUREAU OF LAND MANAGEMENT

Portland, Oregon

The survey represented by this plat, having been correctly executed in accordance with the requirements of law and the regulations of this Bureau, is hereby accepted.

For the Director

Mary J. M. Huttel

Chief Cadastral Surveyor of Oregon

March 24, 2021

Date

OFFICIALLY FILED: 6/21/2021