

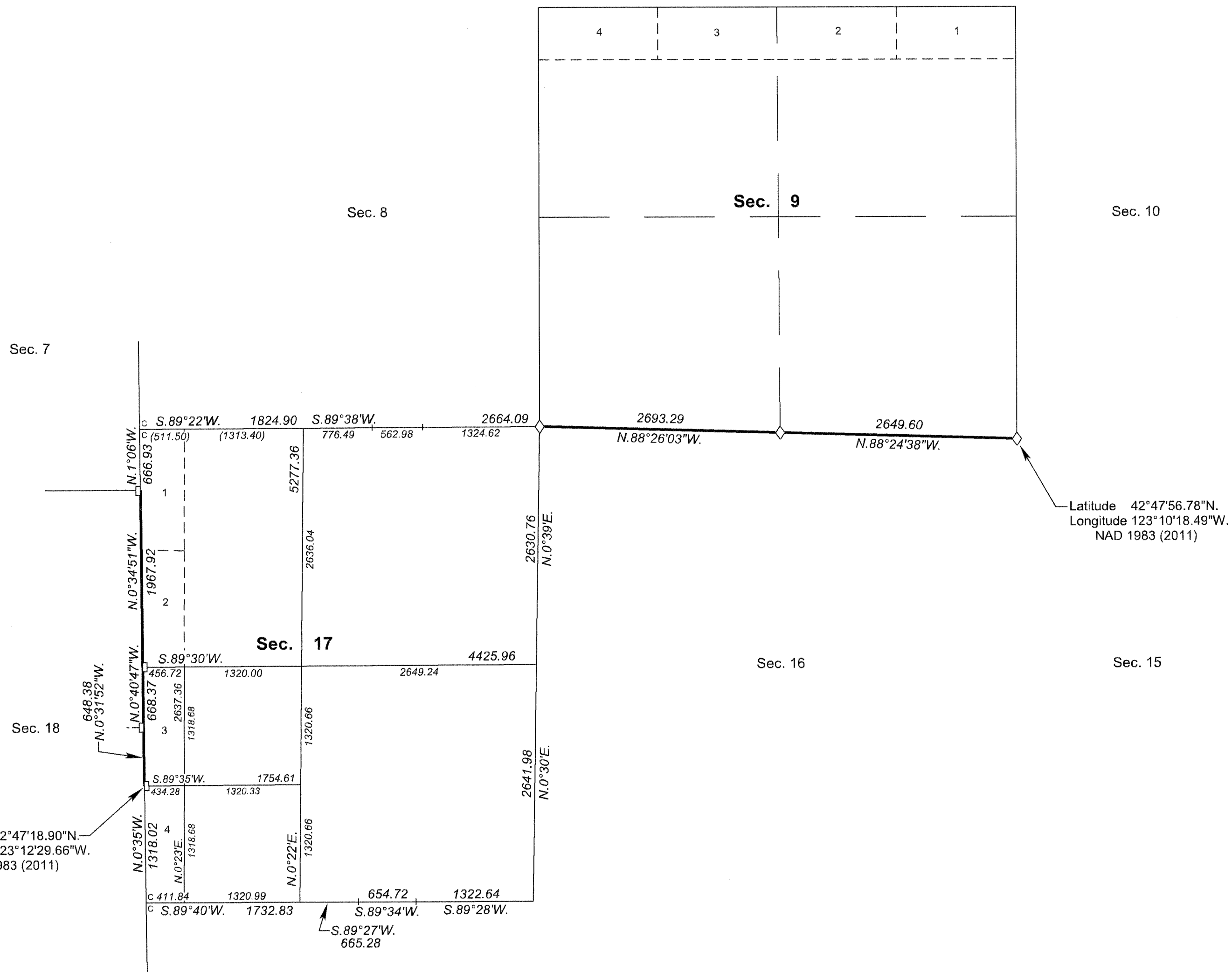
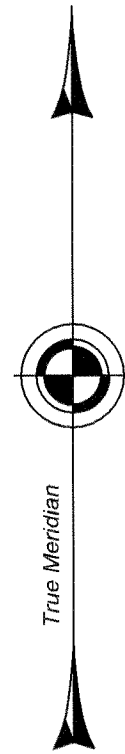
FILED

Date: 8/21/2017 By: JC
This survey consists of:
Map: PLAT: T32-4 2017-1
Narrative: VOL. 58 PAGES
Corner Rpt: 23433-23439

TOWNSHIP 32 SOUTH, RANGE 4 WEST, OF THE WILLAMETTE MERIDIAN, OREGON

DEPENDENT RESURVEY

DOUGLAS COUNTY
SURVEYOR



A history of surveys, corner descriptions, and other relevant information are contained in the field notes.

This plat represents the dependent resurvey of a portion of the subdivisional lines, designed to restore the corners in their true original locations according to the best available evidence, Township 32 South, Range 4 West, Willamette Meridian, Oregon.

Official areas based on the measurements of this survey have been returned for Federal interest land where indicated. Aliquot part legal subdivisions retain their aliquot characteristics and refer to precisely the same land as that which was previously identified by its original survey or description. A lot can only be subdivided by survey or supplemental plat. Except as indicated hereon, the lottings and areas are as shown on the plat approved March 25, 1898.

Survey executed by Ernest Q. Lundeen, Cadastral Surveyor, beginning July 6, 2015, and completed July 23, 2015, pursuant to special instructions approved June 18, 2015, for Group No. 2790, Oregon.

LEGAL SUBDIVISION	OFFICIAL ACRES
SECTION 17	
NE1/4 NE1/4	40.03
NW1/4 NE1/4	40.38
SW1/4 NE1/4	40.11
SE1/4 NE1/4	40.00
NE1/4 NW1/4	39.85
LOT 1	14.93
LOT 2	14.21
SE1/4 NW1/4	39.88
LOT 3	13.50
NE1/4 SE1/4	40.16
NW1/4 SE1/4	40.14
SW1/4 SE1/4	40.05
SE1/4 SE1/4	40.12
TOTAL AREA	443.36
FEDERAL INTEREST LAND RESURVEYED IN SECTION 17	

NOTE:
The lightweight lines with bearings and distances shown were surveyed by Larry D. Evans in 1971, and were utilized to calculate the areas of the Federal interest land in section 17.

LEGEND	
◇	Original corner previously remonumented
□	Corner previously established or reestablished

UNITED STATES DEPARTMENT OF THE INTERIOR
BUREAU OF LAND MANAGEMENT

Portland, Oregon

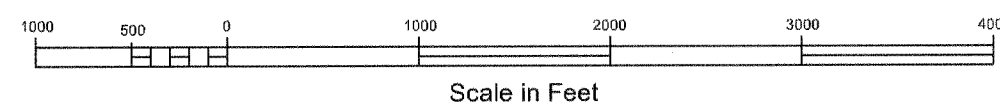
This plat is strictly conformable to the approved field notes, and the survey, having been correctly executed in accordance with the requirements of law and the regulations of this Bureau, is hereby accepted.

For the Director

Chief Cadastral Surveyor of Oregon

February 9, 2017

Date



OFFICIALLY FILED: 6/28/2017