

TOWNSHIP 32 SOUTH, RANGE 4 WEST, OF THE WILLAMETTE MERIDIAN, OREGON

DEPENDENT RESURVEY AND SUBDIVISION OF SECTION 5

FILED
 Date: 9/9/2014 By: JC
 This survey consists of:
 Map (PLAT) 2014-1; T32S R4W
 Narrative: NOTES: VOL 58
 Corner Rpt: PGS 23056-23068

DOUGLAS COUNTY
 SURVEYOR

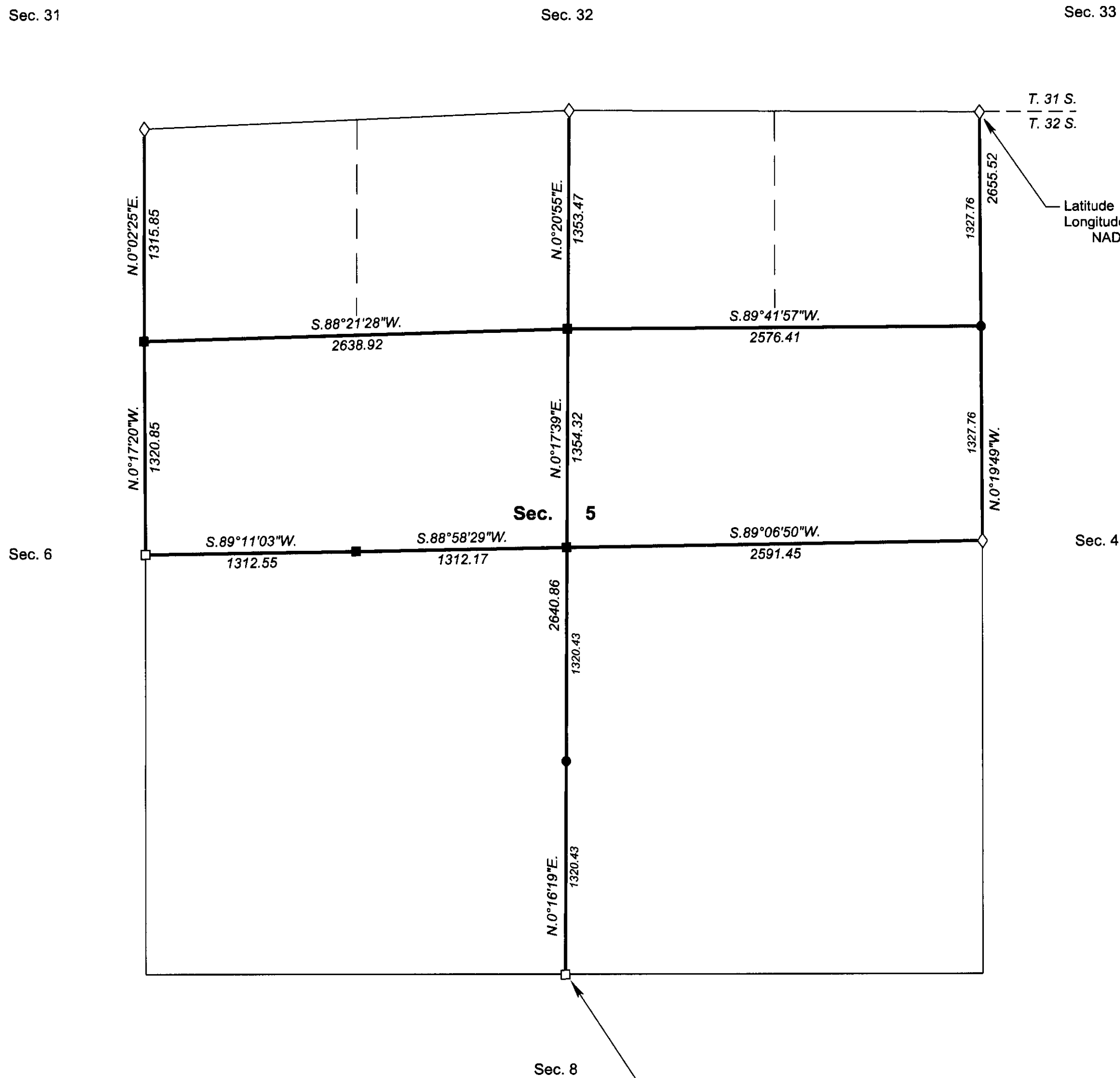
A history of surveys, corner descriptions, and other relevant information are contained in the field notes.

This plat represents the dependent resurvey of a portion of the subdivisional lines, designed to restore the corners in their true original locations according to the best available evidence, and the subdivision of section 5, Township 32 South, Range 4 West, Willamette Meridian, Oregon.

The lottings and areas are as shown on the plat approved April 26, 1872.

Survey executed by Kevin G. Mulder, Cadastral Surveyor, beginning April 25, 2013, and completed May 22, 2013, pursuant to special instructions approved April 10, 2013, for Group No. 2627, Oregon.

OFFICIALLY FILED: July 31, 2014



Latitude 42°49'35.83"N.
 Longitude 123°11'21.93"W.
 NAD 1983 (2011)

Latitude 42°48'43.12"N.
 Longitude 123°11'56.65"W.
 NAD 1983 (2011)

LEGEND

- ◇ Original corner previously remonumented
- Corner previously established or reestablished
- Corner previously established or reestablished; remonumented this survey
- Corner established or reestablished this survey

UNITED STATES DEPARTMENT OF THE INTERIOR
 BUREAU OF LAND MANAGEMENT
 Portland, Oregon

This plat is strictly conformable to the approved field notes, and the survey, having been correctly executed in accordance with the requirements of law and the regulations of this Bureau, is hereby accepted.

For the Director
Mary J. M. Hartzel
 Chief Cadastral Surveyor of Oregon

July 9, 2014
 Date

