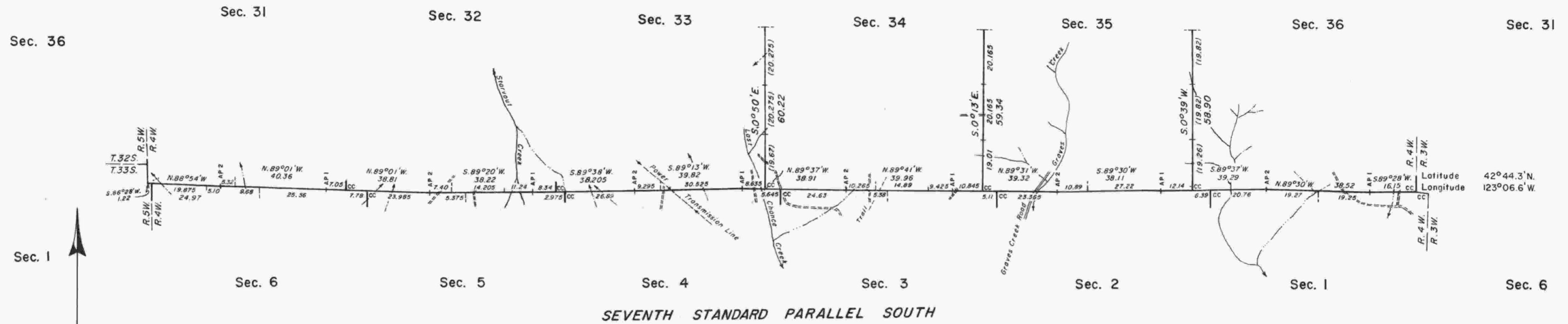


# TOWNSHIP 32 SOUTH, RANGE 4 WEST, OF THE WILLAMETTE MERIDIAN, OREGON.

## DEPENDENT RESURVEY



Mean magnetic declination 19° 30' East

A history of surveys is contained in the field notes.

This plat represents a dependent resurvey of the south boundary (Seventh Standard Parallel South) and a portion of the subdivisional lines, T. 32 S., R. 4 W., designed to restore the corners in their true original location according to the best available evidence.

The lottings and areas are as shown on the plats approved July 26, 1894; March 25, 1898; and January 8, 1904.

The resurvey was executed by Lynn M. Roseberry and Rollin D. Aanrud, Cadastral Surveyors, from July 10, 1975, to October 1, 1975, under Special Instructions dated May 21, 1975, which provide for the surveys included under Group Number 865.

Timber in this area consists of fir, cedar, pine, hemlock, madrone, chinquapin, alder, maple, yew, and dogwood.

UNITED STATES DEPARTMENT OF THE INTERIOR  
BUREAU OF LAND MANAGEMENT  
Portland, Oregon      May 21, 1982

This plat is strictly conformable to the approved field notes, and the survey, having been correctly executed in accordance with the requirements of law and the regulations of this Bureau, is hereby accepted.

For the Director

*William W. Glenn*

Chief Cadastral Surveyor of Oregon

