

TOWNSHIP 32 SOUTH, RANGE 4 WEST, OF THE WILLAMETTE MERIDIAN, OREGON.
DEPENDENT RESURVEY AND SUBDIVISION

Sec. 1

Sec. 6

Sec. 5

Sec. 12

Sec. 8

Sec. 9

Sec. 13

Sec. 18

Sec. 16

Sec. 20

Sec. 21

This plat represents a dependent resurvey of a portion of the west boundary and subdivisional lines, T. 32 S., R. 4 W., Willamette Meridian, Oregon, designed to restore the corners in their true original locations according to the best available evidence, and the subdivision of sections 7 and 17.

The west boundary (offset Willamette Meridian) was surveyed by Butler Ives and George W. Hyde, in 1854.

The north boundary, the north two miles of the east boundary, and a portion of the subdivisional lines were surveyed by William H. Byars, in 1871.

The survey of the east boundary and subdivisional lines was completed by Winfield S. Chapman and Carl S. Nicklin, in 1897.

Chapman and Nicklin retraced several miles of the Byars survey and established closing corners at points of intersection with these line. A portion of the subdivisional lines was resurveyed and certain original corners were remonumented without survey by Hans W. Thielsen, in 1959.

The resurvey and subdivision of sections 7 and 17, were executed by Larry D. Evans, Cadastral Surveyor, from May 4, 1971 to June 24, 1971, under Special Instructions dated April 8, 1971, which provided for the surveys included under Group No. 736.

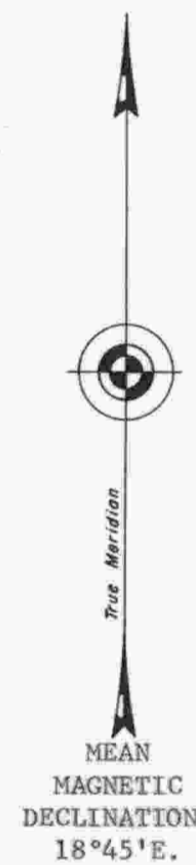
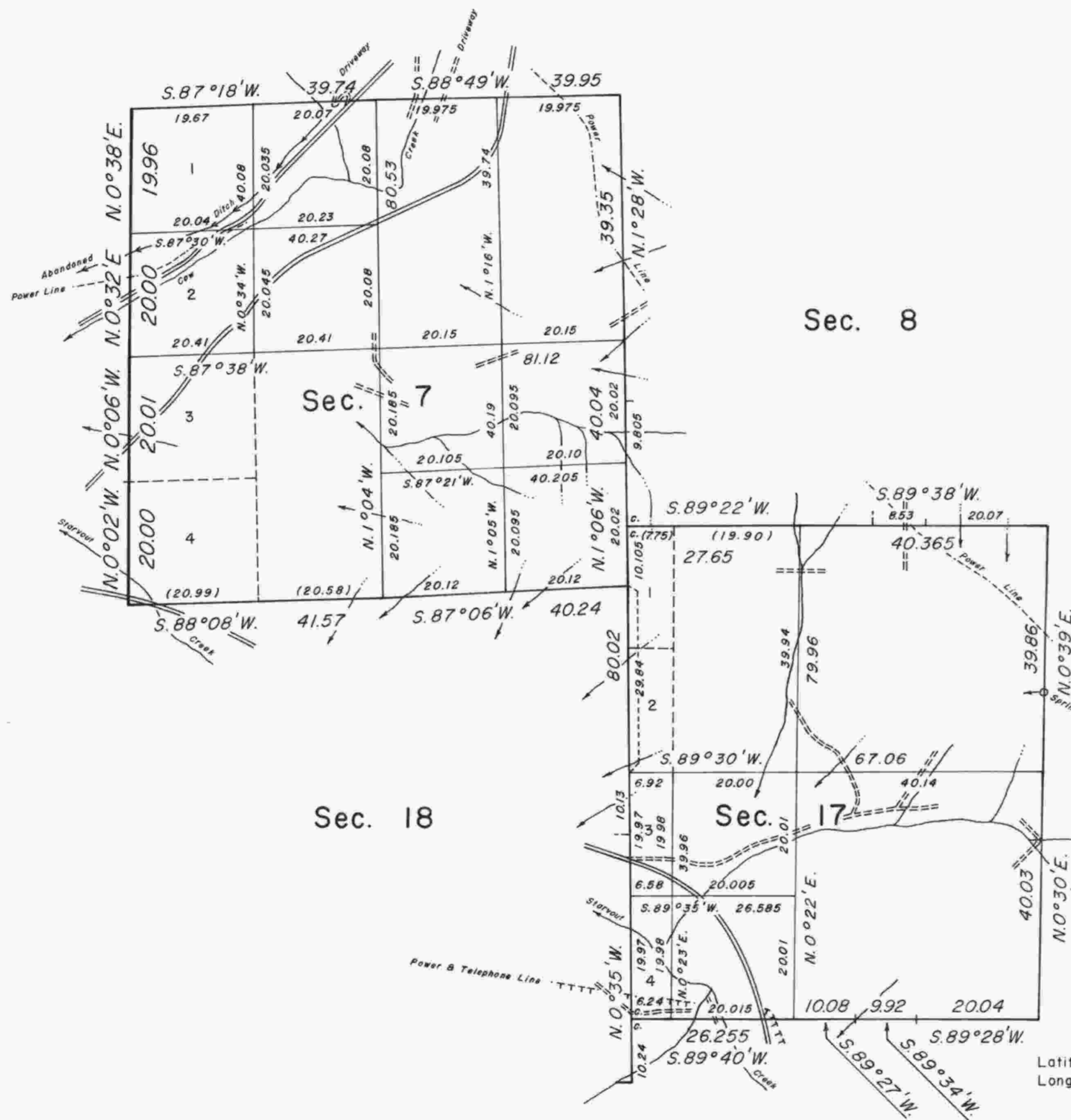
UNITED STATES DEPARTMENT OF THE INTERIOR
BUREAU OF LAND MANAGEMENT
Washington, D.C. November 9, 1977

This plat is strictly conformable to the approved field notes, and the survey, having been correctly executed in accordance with the requirements of law and the regulations of this Bureau, is hereby accepted.

For the Director

Bernard W. Spilge
Chief, Division of Cadastral Survey

Latitude 42°47.1' N.
Longitude 123°11.4' W.



Timber in this area consists of fir, cedar, pine, oak, and madrone.