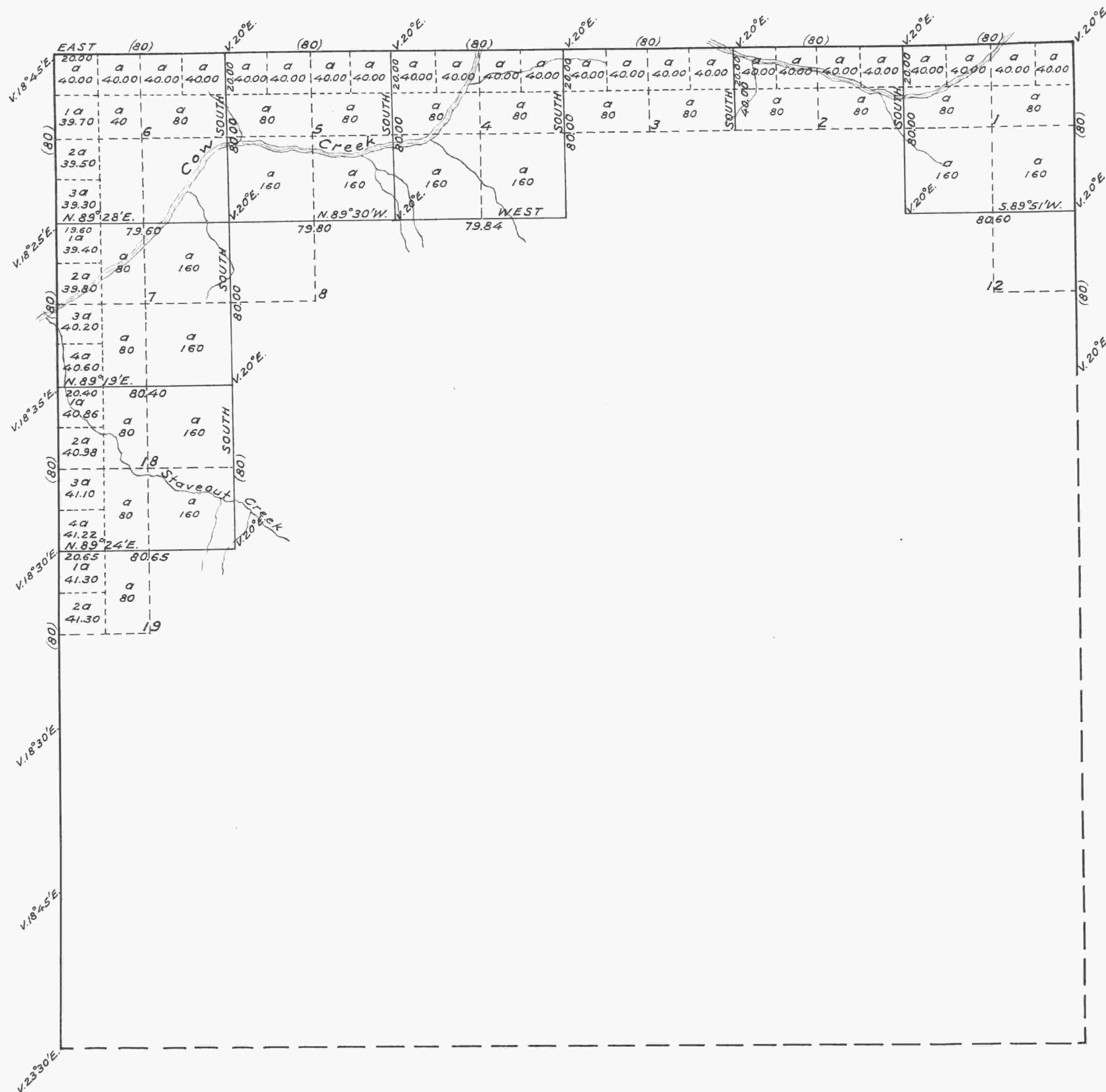


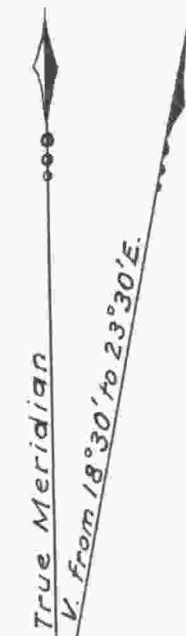
Township No. 32 South, Range No. 4 West, Willamette Meridian, Oregon.

Area	
Sections	Aeres
1	640.00
2	320.00
3	320.00
4	640.00
5	640.00
6	638.50
7	640.00
8	160.00
12	160.00
18	644.16
19	162.60
Total	4965.26



General Description

The land in this Township along Cow Creek and its tributaries is generally of the best quality of alluvial soil. The hills and mountain sides generally 3^d rate. Trap stone or decomposed granite being on the surface. The timber is mostly of the 1st quality of Fir, Cedar, Pine, Laurel, Maple, Ash, Yew and Chinquapin. Underbrush Vine Maple, Manzanita, Hazel and a species of Spice. There are nine (9) settlements and one saw mill in this Township.



Scale 40 Chs. to an inch.

Lines	Contractor	Contract		Amt. Surveyed.			Commenced	Completed
		No.	Date	Miles	Chs.	Lks.		
Subdivisions	W. H. Byars	152	June 3 ^d , 1871	12	40	89	Oct. 7 th , 1871	Oct. 17 th , 1871

The above Map of the Subdivisional lines of Fractl. T. 32 S., R. 4 W., Will. Mer., Oregon, is strictly conformable to the original field notes of the survey thereof on file in this Office which have been examined and approved.
U. S. Surveyor General's Office,
Eugene City, April 26th, 1872.

(signed)
W. H. Odell
Surveyor Genl. Oregon.

Public Survey Office,
Portland, Oregon,
November 5, 1929.
I certify the above to be a
correct copy of the original plat
on file in this office.

Joseph A. Young
Office Cadastral Engineer.