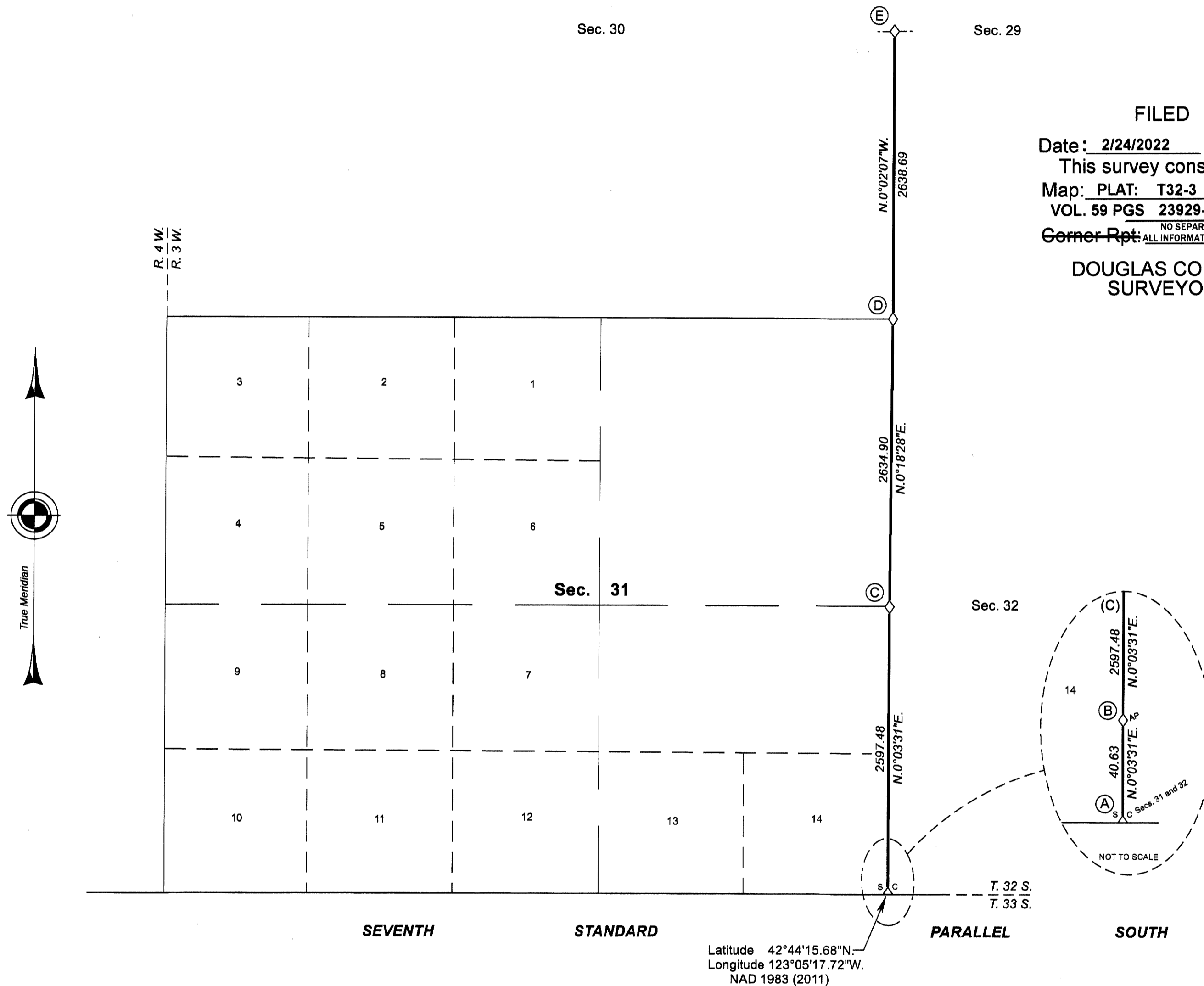


# TOWNSHIP 32 SOUTH, RANGE 3 WEST, OF THE WILLAMETTE MERIDIAN, OREGON

SHEET 1 OF 2

## DEPENDENT RESURVEY



**FILED**  
 Date: 2/24/2022 By: JC  
 This survey consists of:  
 Map: PLAT: T32-3 2021-1  
 VOL. 59 PGS 23929-23930  
 Corner Rpt: NO SEPARATE LINENOTES  
ALL INFORMATION IS ON THE PLAT  
**DOUGLAS COUNTY  
SURVEYOR**

This plat constitutes the entire record of the dependent resurvey of a portion of the subdivisional lines, designed to restore the corners in their true original locations according to the best available evidence, Township 32 South, Range 3 West, Willamette Meridian, Oregon.

The history of official surveys pertaining to this survey is as follows:

In 1879, Albert O. Eckelson, U.S. Deputy Surveyor, surveyed the south boundary (Seventh Standard Parallel South), as shown on the official plat of survey approved January 14, 1880.

In 1913, Fred Mensch, U.S. Surveyor, resurveyed the south boundary (Seventh Standard Parallel South) and surveyed a portion of the subdivisional lines, as shown on the official plat of survey approved October 15, 1914.

In 1975, Lynn M. Roseberry, Cadastral Surveyor, resurveyed the south boundary (Seventh Standard Parallel South), as shown on the official plat of survey accepted May 21, 1982.

The directions of the lines are based on the true meridian as determined by Global Positioning Systems (GPS) techniques and carried forward by sustained angulation using conventional survey techniques. All measurements along the lines were derived through the use of GPS and conventional survey techniques. Measured distances and directions have been adjusted by computer software that incorporates a least squares adjustment routine. The adjusted mean bearings and mean horizontal ground elevation distances are reported to the nearest second and 0.01 foot.

Except as indicated hereon, the lottings and areas are as shown on the plat approved October 15, 1914.

Preliminary to the resurvey, the lines of the official original surveys and resurveys were retraced and a search was made for all corners, lines, other calls of record, and where available, collateral evidence of local surveys and corners. Identified corners were perpetuated in their original positions. The retracement data was thoroughly verified and only the true line field data are given hereon.

Only those lines which represent the Bureau of Land Management (BLM) property lines were posted with aluminum angle posts, 5 feet long, 1 inch x 1 inch, blazed, painted, and tagged with BLM boundary signs.

The geographic position shown hereon was determined by a tie from a temporary GPS control point, utilizing dual frequency, carrier phase GPS receivers, and processed using the National Geodetic Survey's Online Positioning User Service (OPUS).

The survey was executed in accordance with the specifications set forth in the Manual of Surveying Instructions (2009), and the special instructions approved May 31, 2018, for Group No. 2916, Oregon, by Ernest Q. Lundeen, Cadastral Surveyor, beginning June 14, 2018 and completed November 15, 2018. He was assisted by Larry Judd, Cadastral Surveyor, and Dale A. Mustain, Todd R. Jennings, Cory A. Hultz and Carl S. Vanorden, Surveying Technicians.

UNITED STATES DEPARTMENT OF THE INTERIOR  
BUREAU OF LAND MANAGEMENT

Portland, Oregon

The survey represented by this plat, having been correctly executed in accordance with the requirements of law and the regulations of this Bureau, is hereby accepted.

For the Director

*Mary J. M. Hartzel*

Chief Cadastral Surveyor of Oregon

March 24, 2021

Date

I, Ernest Q. Lundeen, Cadastral Surveyor, HEREBY CERTIFY upon honor, that in pursuance of special instructions bearing the approval date of the 31st day of May, 2018, and the assignment instructions bearing the date of the 31st day of May, 2018, I have dependently resurveyed a portion of the subdivisional lines, Township 32 South, Range 3 West, Willamette Meridian, Oregon, which is represented upon this plat as having been executed by me and under my direction; and that said survey has been made in strict conformity with said special instructions, the Manual of Surveying Instructions, and in the specific manner described on this plat.

*Ernest Q. Lundeen*  
Cadastral Surveyor

February 22, 2021  
Date

**LEGEND**  
 ◇ Original corner previously remonumented



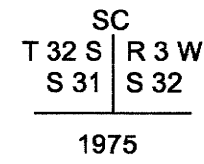
OFFICIALLY FILED: 6/21/2021

TOWNSHIP 32 SOUTH, RANGE 3 WEST, OF THE WILLAMETTE MERIDIAN, OREGON

SHEET 2 OF 2

DEPENDENT RESURVEY

(A) The standard cor. of secs. 31 and 32, on the S. bdy. of the Tp. (Seventh Standard Parallel South), reported by Roseberry in 1975, monumented with an iron post, 2 1/2 ins. diam., firmly set, projecting 12 ins. above ground, with brass cap mkd.



from which bearing trees reported by Roseberry

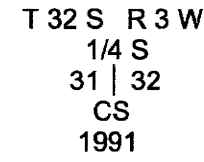
A fir, 48 ins. diam., bears N. 31° E., 48.9 ft. dist., with a healed blaze (Record, 48.2 ft.).

A fir, 54 ins. diam., bears N. 58° W., 71.9 ft. dist., with scribe marks SC T3 R3 visible on a partially healed blaze.

(B) The original 1913 line tree, a fir, 73 ins. diam., with 2 healed notches on the north and south face.

This line tree now becomes an angle point. Due to the close proximity of the standard cor. and accessories of secs. 31 and 32, and no break in bearing between the standard cor. and the 1/4 sec. cor. of sections 31 and 32, no reference monuments were established.

(C) The 1/4 sec. cor. of secs. 31 and 32, perpetuated by the Jackson County Surveyor's Office in 1991, as shown on the Jackson County Surveyor's Office reestablishment record in T. 32 S., R. 3 W., point identifier No. 200140; monumented with an iron post, 1 in. diam., firmly set, projecting 6 ins. above ground with brass cap mkd.



from which original bearing trees

A cedar, 27 ins. diam., bears S. 70° E., 18.5 ft. dist., with a healed blaze.

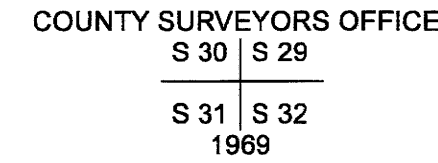
A pine, 26 ins. diam., bears S. 87 3/4° W., 12.5 ft. dist., with scribe marks 31 visible on a partially healed blaze. (Record, S. 85° W.)

and the remains of bearing trees mkd. by the Jackson County Surveyors Office

A fir, 8 ins. diam., bears S. 31 3/4° E., 11.3 ft. dist., with a healed blaze.

A fir snag, 4 ins. diam., bears N. 21 1/2° W., 21.8 ft. dist., with a healed blaze.

(D) The cor. of secs. 29, 30, 31 and 32, perpetuated by the Douglas County Surveyor's Office in 1969, as shown on the Douglas County Surveyor's Office renewal record in T. 32 S., R. 3 W., point identifier No. 200200; monumented with an iron post, 1 1/2 ins. diam., firmly set, projecting 14 ins. above ground with brass cap mkd.



from which original bearing trees

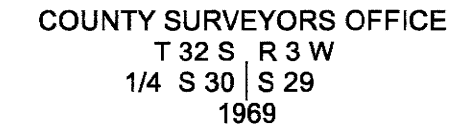
A fir, 36 ins. diam., bears N. 51° E., 30.4 ft. dist., with a healed blaze.

A fir, 46 ins. diam., bears S. 38 3/4° E., 18.4 ft. dist., with a healed blaze. (Record, S. 41° E., 19.1 ft.)

A cedar, 45 ins. diam., bears S. 16° W., 35.6 ft. dist., with a healed blaze.

A pine, 40 ins. diam., bears N. 30° W., 21.8 ft. dist., with a healed blaze.

(E) The 1/4 sec. cor. of secs. 29 and 30, perpetuated by the Douglas County Surveyor's Office in 1969, as shown on the Douglas County Surveyor's Office renewal record in T. 32 S., R. 3 W., point identifier No. 200240; monumented with an iron post, 1 in. diam., firmly set, projecting 12 ins. above ground with brass cap mkd.



from which an original bearing tree

A fir, 35 ins. diam., bears S. 55° W., 12.5 ft. dist., with a healed blaze. (Record, S. 58° W.)

and a bearing tree mkd. by Douglas County Surveyor's Office

A fir, 8 ins. diam., bears N. 15 1/4° E., 12.5 ft. dist., with a healed double blaze.

FILED

Date: 2/24/2022 By: JC

This survey consists of:

Map: PLAT: T32-3 2021-1

VOL. 59 PGS 23929-23930

Corner Rpt: NO SEPARATE LINENOTES ALL INFORMATION IS ON THE PLAT

DOUGLAS COUNTY SURVEYOR

UNITED STATES DEPARTMENT OF THE INTERIOR BUREAU OF LAND MANAGEMENT

Portland, Oregon

The survey represented by this plat, having been correctly executed in accordance with the requirements of law and the regulations of this Bureau, is hereby accepted.

For the Director

Handwritten signature of Mary J. M. Heutel

Chief Cadastral Surveyor of Oregon

March 24, 2021

Date

OFFICIALLY FILED: 6/21/2021