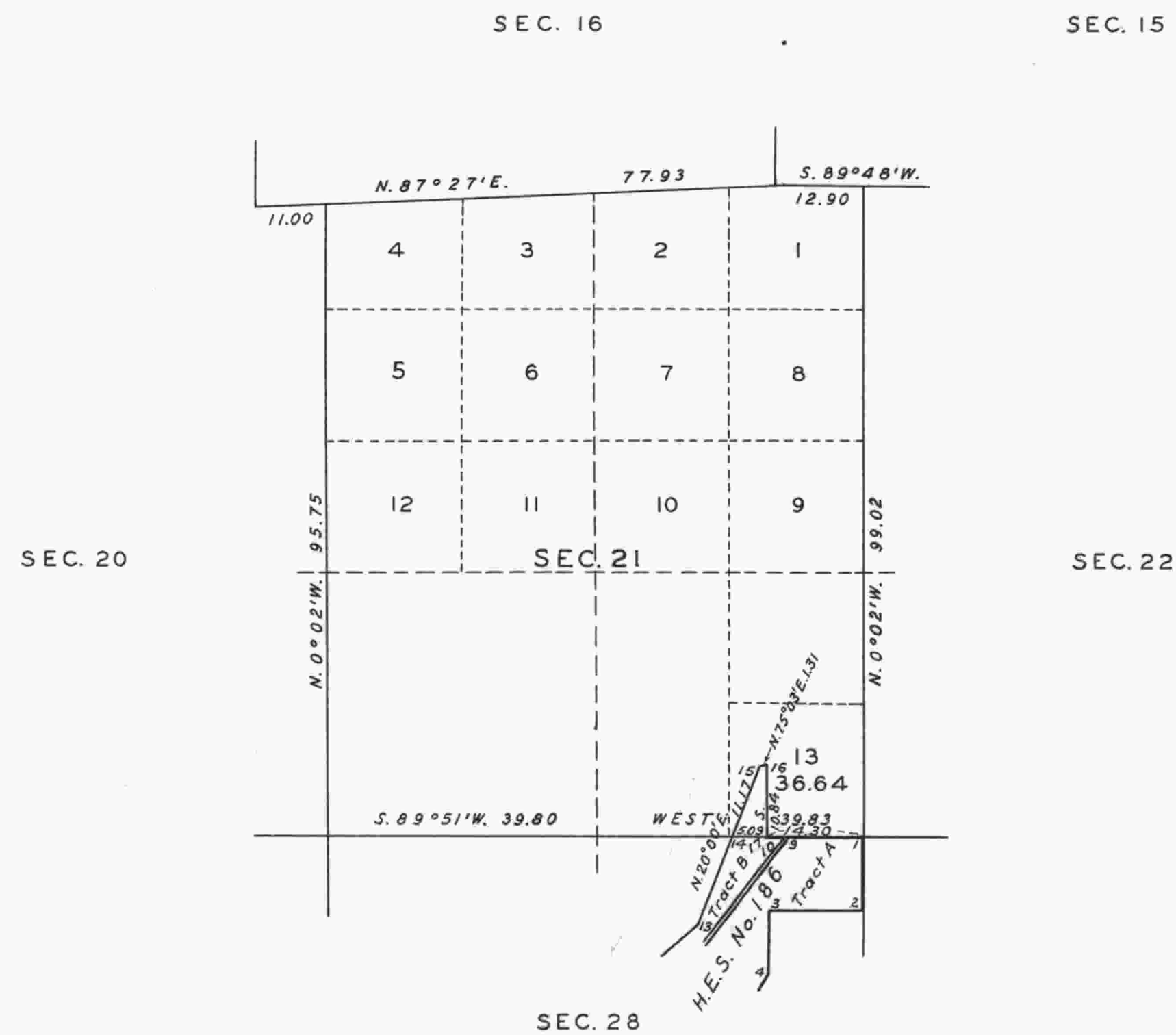


TOWNSHIP No. 32 SOUTH, RANGE No. 3 WEST,  
OF THE WILLAMETTE MERIDIAN, OREGON.  
SUPPLEMENTAL PLAT OF SECTION 21.

SCALE: 20 CHAINS TO AN INCH.



Public Survey Office,  
Portland, Oregon, December 28, 1932.

The above supplemental plat of Section 21, Township No. 32 South, Range No. 3 West, of the Willamette Meridian, Oregon, based upon the plat approved October 15, 1914, showing the lotting of a fractional area created by the segregation of forest homestead entry survey No. 186, to accommodate homestead application Roseburg 020334, prepared in accordance with instructions contained in the Commissioner's letter "E" dated December 16, 1932, is hereby approved.

*Joseph A. Ganong*  
Office Cadastral Engineer.

DEPARTMENT OF THE INTERIOR,  
GENERAL LAND OFFICE,  
Washington, D. C., January 27, 1933.

The amended lotting represented by this supplemental plat having been correctly made in accordance with the regulations of this office, the plat is hereby accepted.

*J. H. Gandy*  
Acting Assistant Commissioner.