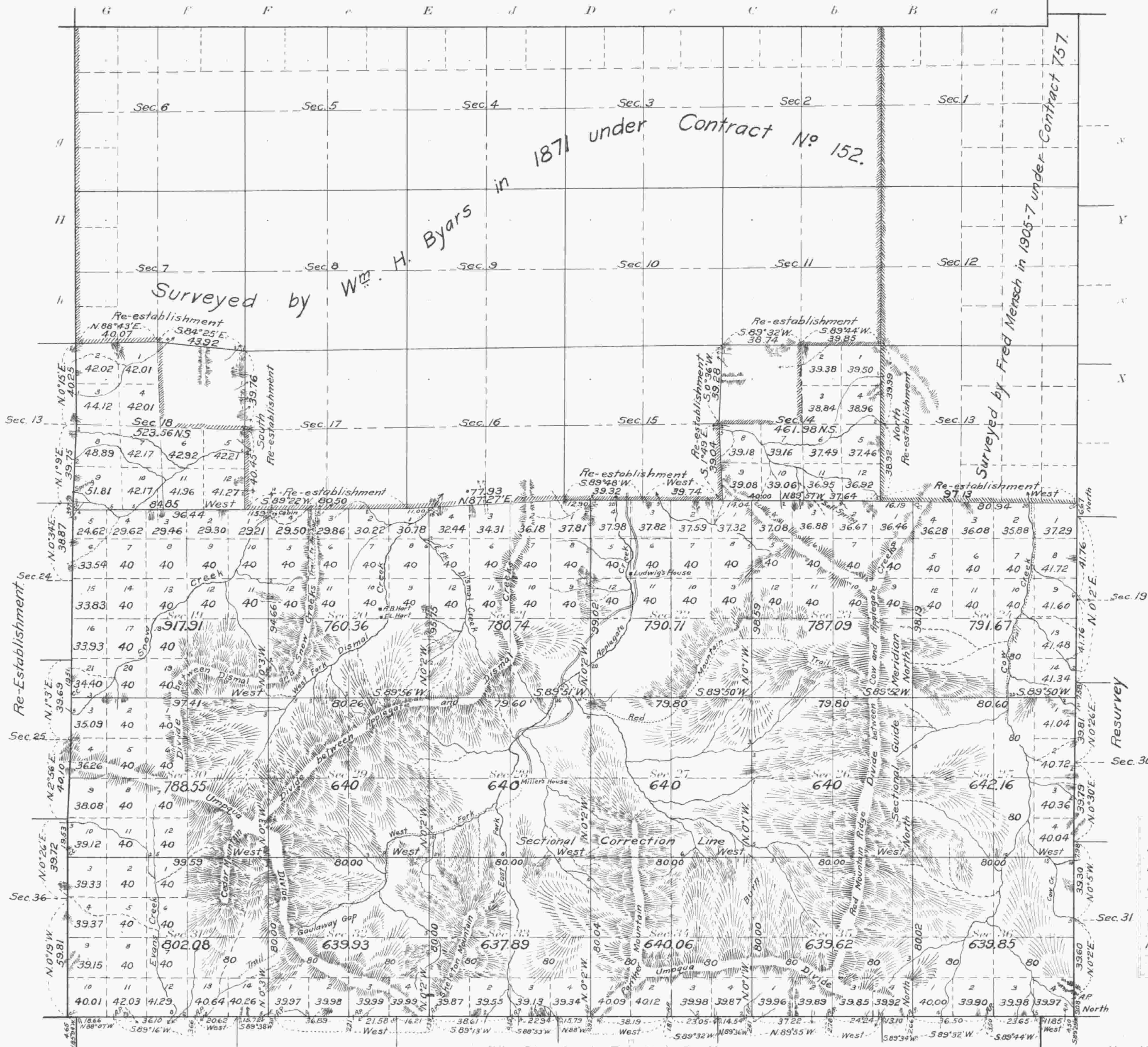


Extension Survey
Township No 32 South, Range No 3 West of the Willamette Meridian, Oregon.



Areas in Acres	
Public Land	13904.16
Indian Reservation	
Indian Allotments	
Mineral Claims	
Water Surface	
Former Surveys	11012.29
Total Area	24816.45

Scale 40 Chains to an inch
Mean Magnetic Declination 20° 10' E.
Latitude 42° 44' N.
Longitude 122° 59' W.

Surveys Designated	By Whom Surveyed	Group No.	Special Instructions	Amount of Surveys			When Surveyed	
				Mks.	chs.	lks.	Began	Completed
Subdivisions	Fred Mensch	14	August 20, 1912	39	60	46	Sept. 15, 1913.	Oct. 29, 1913.
Resurvey, portion E. Bdy	"	"	"	3	17	77	" 22 "	" 25 "
Re-establishment portion W. Bdy	"	"	"	3	58	19	" 13 "	" 27 "
Resurvey 7th St. Par. S.	"	"	"	6	19	41	" 7 "	" 13 "
Connections	"	"	"	1	28	23	Oct. 5 "	" 24 "
Retracement portion E. & N. Bdy.	Fred Mensch	under	Contract No			757	in	1905
East Boundary	Charles L. Campbell	"	"			747	"	1802
Portion of W. Bdy.	Carl S. Nicklin	"	"			664	"	1897
Portion of N. Bdy.	Wm. H. Byars	"	"			620	"	1894
7th St. Par. S.	McKenzie & Eckelson	"	"			329	"	1879
Portion of N. & W. Bdys.	Wm. H. Byars	"	"			152	"	1871

The above map of Township No 32 South Range No 3 West of the Willamette Meridian Oregon is strictly conformable to the field notes of the extension survey thereof on file in this office, which have been examined and approved
U. S. Surveyor General's Office
Portland, Oregon, October 15, 1914

Edwards Worth
Surveyor General.

ACCEPTED BY THE HON. COMMISSIONER G. L. CLUNE 7, 1915