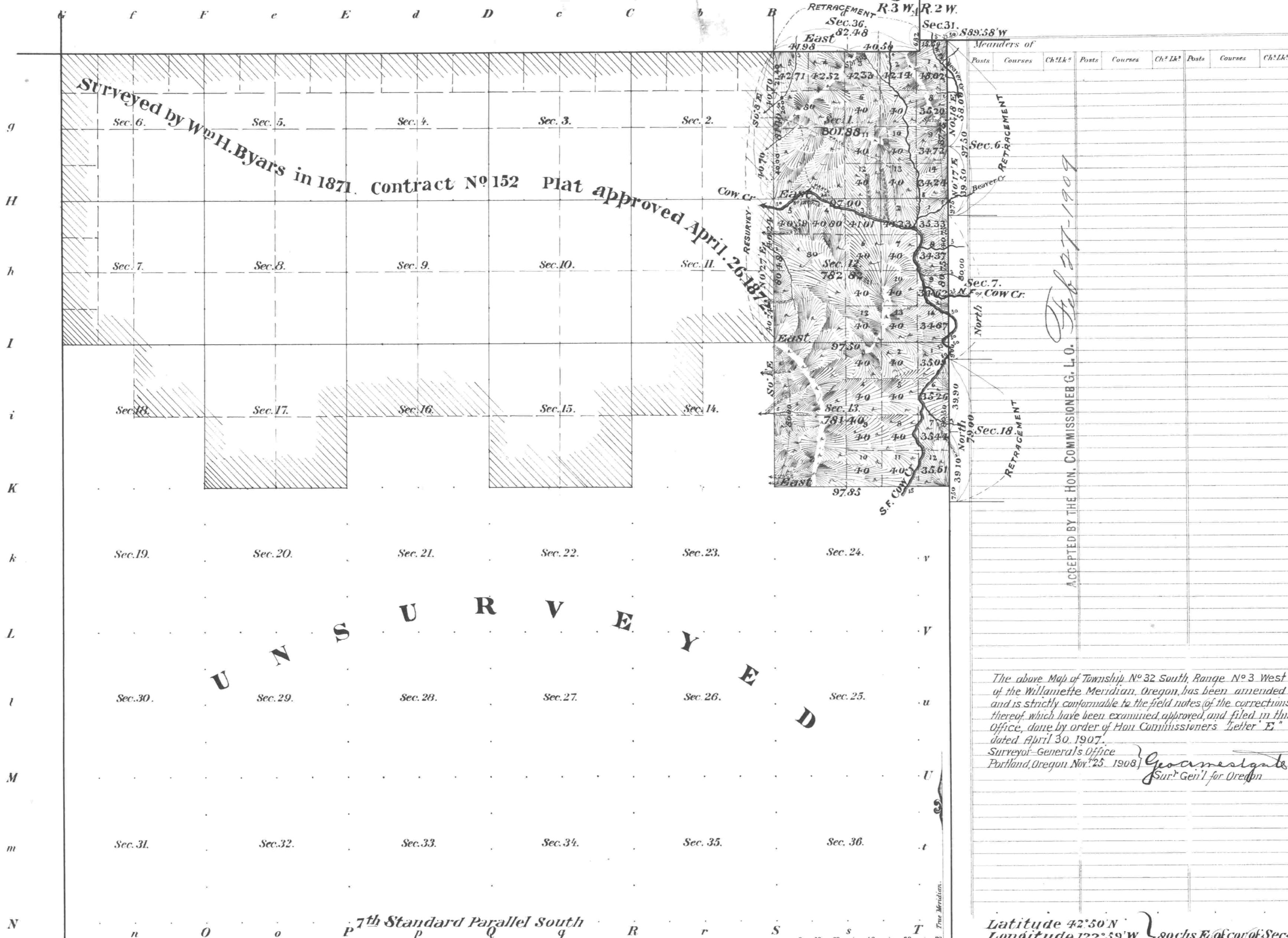


Township N° 32 South Range N° 3 West of the Willamette Meridian Oregon.



U  
N  
S  
U  
R  
V  
E  
Y  
E  
D

Posts	Courses	Ch <sup>2</sup> Lk <sup>2</sup>	Posts	Courses	Ch <sup>2</sup> Lk <sup>2</sup>	Posts	Courses	Ch <sup>2</sup> Lk <sup>2</sup>

The above Map of Township N° 32 South, Range N° 3 West of the Willamette Meridian, Oregon, has been amended and is strictly conformable to the field notes of the corrections thereof which have been examined, approved, and filed in this Office, done by order of Hon Commissioners 'Hether E.' dated April 30, 1907.  
 Surveyor-General's Office  
 Portland, Oregon, Nov. 25, 1908  
*Geo. A. Mesquite*  
 Sur. Gen'l for Oregon

Latitude 42° 50' N  
 Longitude 122° 39' W } 80 chs E. of cor. of Secs 1, 2, 11 and 12.  
 Mean Mag Decl. 21° E

Area of Former Survey 8646.19 Acres of New Survey 2366.10 Acres Total number of Acres 11012.29

Surveys Designated	By Whom Surveyed	Date of Contract	Amount of Surveys M. Ch <sup>2</sup> Lk <sup>2</sup>	When Surveyed	N° of Contract
Township lines					
Subdivisions	Fred Mensch	Sept 14, 1904	4 52 35	Sept 1, 1905 to Nov 16, 1907	757
Connections			26 28		
Resurvey of Subdivisions			2 01 88	Sept 2, 1905 to Nov 17, 1907	"
Retracement of Sec 1			3 34 48	Jan 6, 1905	"
Connections on East			6 82		
E. Bd of T <sup>1</sup>	Chas L Campbell	May 5, 1902		1902	747
W. Bd of Sec 18, 19, 20, 21	Carl S. Nicklitz	May 23, 1896		1897	667
S. Bd of T <sup>1</sup> W. Bd of Sec 1, 2, 3, 4, 5, 6, 7, 8, 9, 10, 11, 12	Wm M. Bushey	June 17, 1879		1879	328
N. Bd of Sec 1	Wm M. Bushey	1893		1894	620
W. Bd of Sec 2, 3, 4, 5, 6, 7, 8, 9, 10, 11, 12	Wm H. Byars	June 3, 1871		1871	152

The above Map of Township N° 32 South of Range N° 3 West of the Willamette Meridian, Oregon, is strictly conformable to the field notes of the survey thereof on file in this Office, which have been examined and approved.  
 Surveyor-General's Office,  
 Portland, Oregon, June 29, 1906  
*Geo. W. Daly*  
 Sur. Gen'l for Oregon