

TOWNSHIP 32 SOUTH, RANGE 1 WEST, OF THE WILLAMETTE MERIDIAN, OREGON

DEPENDENT RESURVEY

FILED

Date: 9/24/2018 By: JC
This survey consists of:
Map: T32-1W 2018-1
Narrative: VOL. 59 PAGE
Corner Rpt: 23588-23598

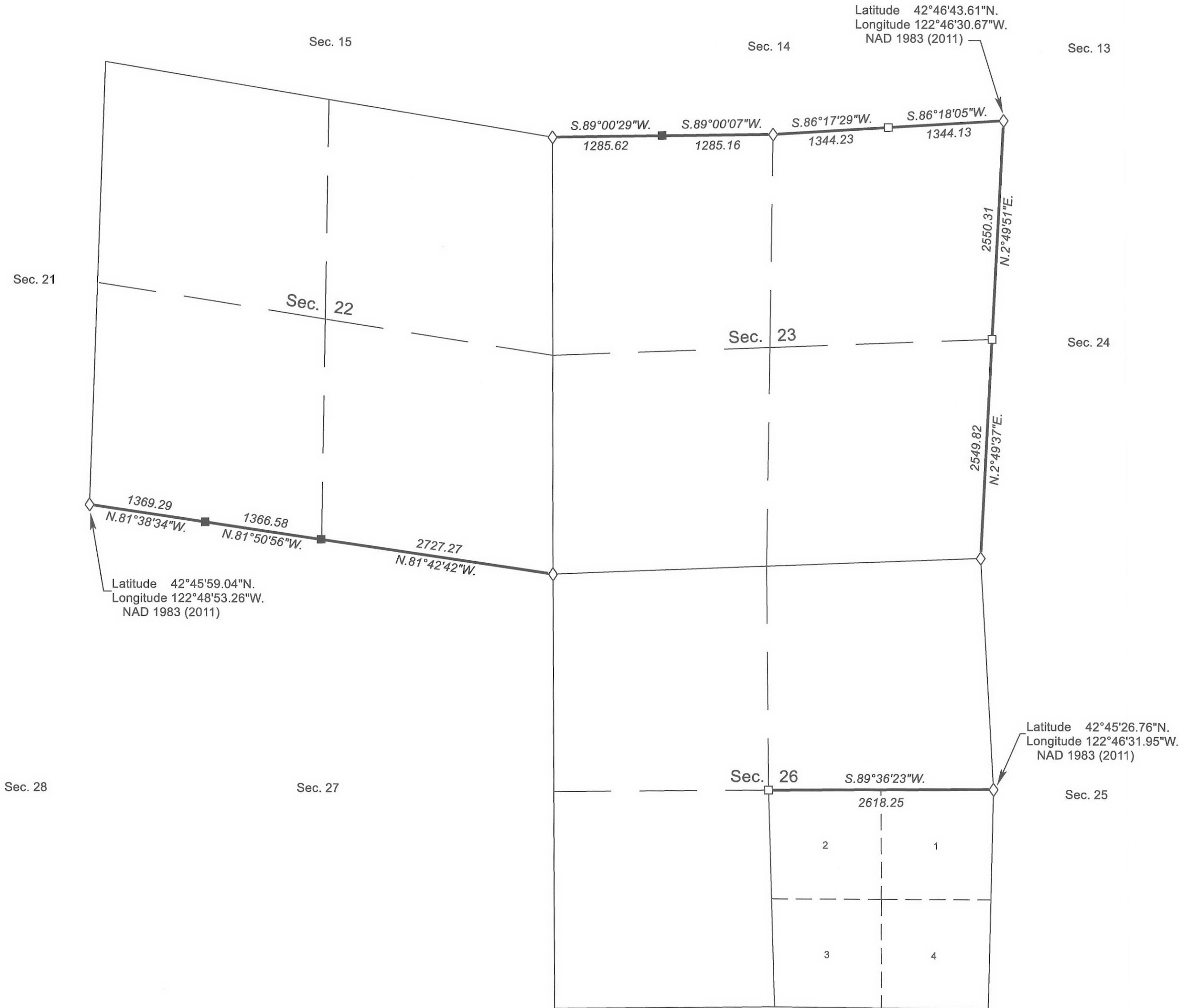
DOUGLAS COUNTY
SURVEYOR

A history of surveys, corner descriptions, and other relevant information are contained in the field notes.

This plat represents the dependent resurvey of a portion of the subdivisional lines and a portion of the subdivision of section lines in section 26, designed to restore the corners in their true original locations according to the best available evidence, Township 32 South, Range 1 West, Willamette Meridian, Oregon.

Official areas based on the measurements of this survey have been returned for Federal interest land where indicated. Aliquot part legal subdivisions retain their aliquot characteristics and refer to precisely the same land as that which was previously identified by its original survey or description or supplemental plat. Except as indicated hereon, the lottings and areas are as shown on the plat approved April 10, 1884, and accepted June 24, 1966.

Survey executed by Ernest Q. Lundeen, Cadastral Surveyor, beginning May 16, 2017, and completed June 8, 2017, pursuant to special instructions approved May 16, 2017, under Group Number 2873, Oregon.



LEGEND

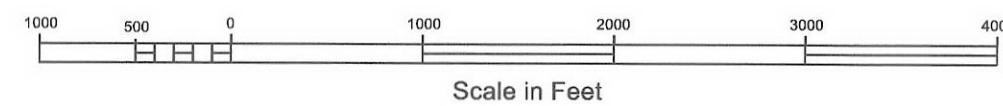
- ◇ Original corner previously remonumented
- Corner previously established or reestablished
- Corner previously established or reestablished; remonumented this survey

UNITED STATES DEPARTMENT OF THE INTERIOR
BUREAU OF LAND MANAGEMENT
Portland, Oregon

This plat is strictly conformable to the approved field notes, and the survey, having been correctly executed in accordance with the requirements of law and the regulations of this Bureau, is hereby accepted.

For the Director
Mary J. M. Hartzel
Chief Cadastral Surveyor of Oregon

May 18, 2018
Date



JACKSON COUNTY

OFFICIALLY FILED: 7/6/2018