

TOWNSHIP 32 SOUTH, RANGE 1 WEST, OF THE WILLAMETTE MERIDIAN, OREGON

DEPENDENT RESURVEY AND SUBDIVISION OF SECTION 30

JACKSON COUNTY
FILED FOR INFORMATION ONLY

Sec. 19

FILED
Date: 8/20/2013 By: JC
This survey consists of:
Map: T32-1W 2013-1
Narrative: VOL. 58 PAGE
Corner Rpt: 22994-22999

DOUGLAS COUNTY
SURVEYOR

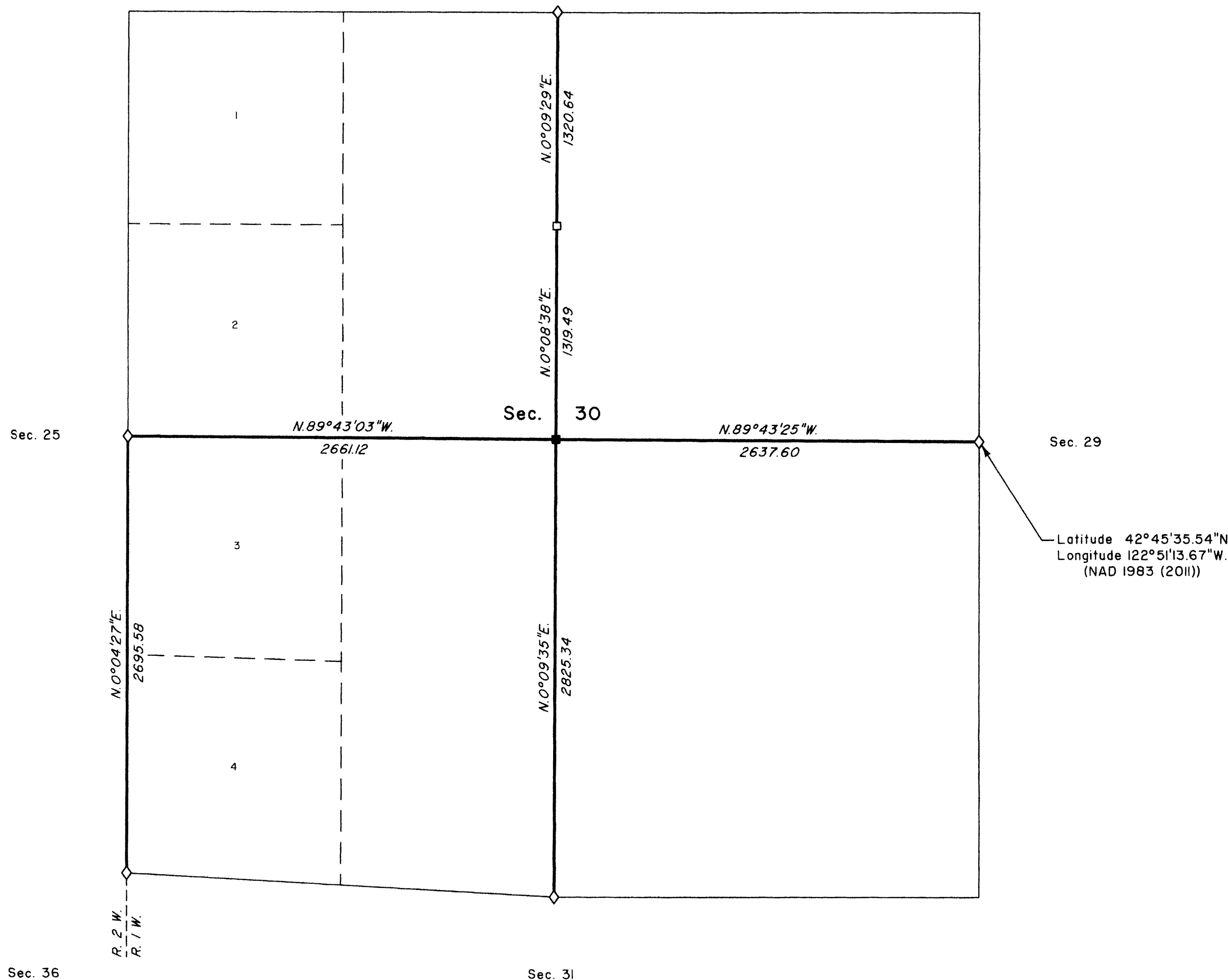
A history of surveys, corner descriptions, and other relevant information are contained in the field notes.

This plat represents the dependent resurvey of a portion of the west boundary, designed to restore the corners in their true original locations according to the best available evidence, and the subdivision of section 30, Township 32 South, Range 1 West, Willamette Meridian, Oregon.

The lottings and areas are as shown on the plat approved April 10, 1884.

Survey executed by Markell G. Hamm, Cadastral Surveyor, beginning July 16, 2012, and completed August 17, 2012, pursuant to special instructions approved July 3, 2012, for Group No. 2674, Oregon.

OFFICIALLY FILED: 7/18/2013



Latitude 42°45'35.54"N.
Longitude 122°51'13.67"W.
(NAD 1983 (2011))

LEGEND	
◇	Original corner previously remonumented
□	Corner previously established or reestablished
■	Corner previously established or reestablished; remonumented this survey

UNITED STATES DEPARTMENT OF THE INTERIOR
BUREAU OF LAND MANAGEMENT
Portland, Oregon

This plat is strictly conformable to the approved field notes, and the survey, having been correctly executed in accordance with the requirements of law and the regulations of this Bureau, is hereby accepted.

For the Director

Mary J. M. Hail

Chief Cadastral Surveyor of Oregon

June 14, 2013
Date

