


TOWNSHIP 32 SOUTH, RANGE 1 WEST, OF THE WILLAMETTE MERIDIAN, OREGON.

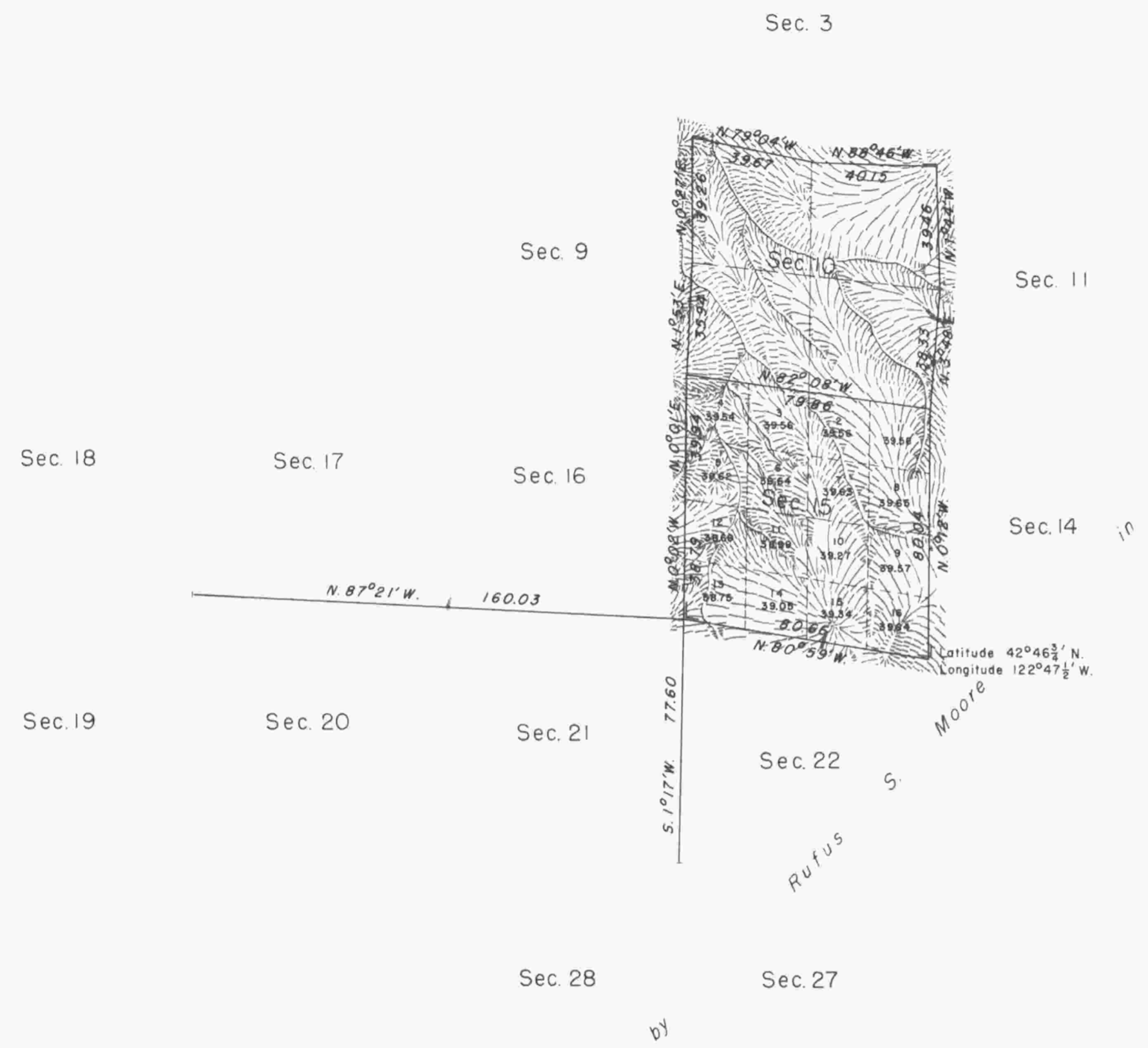
DEPENDENT RESURVEY



 True Meridian

 Mean Magnetic Declination

 19½° East



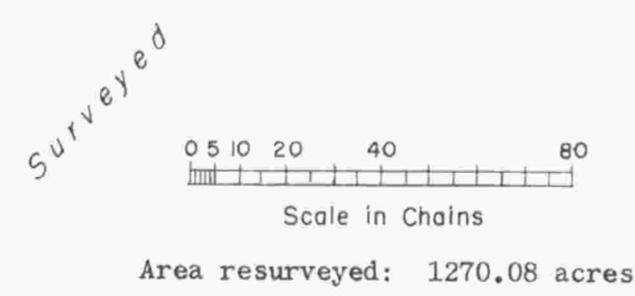
1883

This plat represents a retracement and re-establishment of a portion of the subdivisional lines designed to restore the corners in their true original locations according to the best available evidence; and, excepting as new or modified vacant subdivisions are shown hereon, the lottings and areas are as shown on the plat approved April 10, 1884.

Old growth fir timber in this area has been logged leaving timber consisting of second growth fir, maple and madrona.


Subdivisional lines surveyed by Rufus S. Moore in 1883.

Dependent resurvey of a portion of the subdivisional lines of T. 32 S., R. 1 W., W. M., Oregon executed by Hans W. Thielsen August 16 to September 28, 1955 under Special Instructions dated August 3, 1955, which provide for the surveys included under Group 318, Oregon.



UNITED STATES DEPARTMENT OF THE INTERIOR
BUREAU OF LAND MANAGEMENT
Washington, D. C. March 29, 1956

This plat is strictly conformable to the approved field notes, and the survey, having been correctly executed in accordance with the requirements of law and the regulations of this Bureau, is hereby accepted.

For the Director

 Cadastral Engineering Staff Officer