

TOWNSHIP 31 SOUTH, RANGE 9 WEST, OF THE WILLAMETTE MERIDIAN, OREGON

DEPENDENT RESURVEY AND SUBDIVISION OF SECTION 35

Date: 9/10/2018 By: JC
 This survey consists of:
 Map: PLAT: T32-1W 2018-2
 Narrative: VOL. 59 PG 23587
 Corner Rpt: NO SEPARATE LINENOTES
 ALL INFORMATION IS ON THE PLAT

DOUGLAS COUNTY
 SURVEYOR

This plat constitutes the entire record of the dependent resurvey of a portion of the subdivisional lines, designed to restore the corners in their true original locations according to the best available evidence, and the subdivision of section 35, Township 31 South, Range 9 West, Willamette Meridian, Oregon.

The history of the official surveys pertaining to this survey is as follows:

In 1901, William H. Byars, U.S. Deputy Surveyor, surveyed the subdivisional lines as shown on the official plat of survey approved April 3, 1902.

In 2010, Francis J. Simon, Cadastral Surveyor, resurveyed a portion of the subdivisional lines and subdivided section 35 as shown on the official plat of survey accepted November 16, 2011.

In 1982, the Bureau of Land Management (BLM) surveyed section 35. This survey was done administratively and not under an official government survey. The record for this survey is located in the Medford District office.

The directions of the lines are based on the true meridian as determined by Global Positioning System (GPS) techniques and carried forward by sustained angulation using conventional survey techniques. All measurements along the lines were derived through the use of GPS and conventional surveying techniques. Measured distances and directions have been adjusted by computer software that incorporates a least squares adjustment routine. The adjusted mean bearings and mean horizontal ground elevation distances are reported to the nearest second and 0.01 foot.

The lottings and areas are as shown on the plat approved April 3, 1902.

Preliminary to the resurvey, the lines of the official original surveys were retraced and a search was made for all corners, lines, other calls of record, and where available, collateral evidence of local surveys and corners. Identified corners were perpetuated in their original positions. The retracement data was thoroughly verified and only the true line field data are given hereon.

Each new bearing tree has a 2 1/2 inch x 1/4 inch magnetic nail (Mag Nail) driven at the base on right side center, unless otherwise noted in the corner description. Only those lines which represent the BLM property lines were posted with aluminum angle posts, 5 feet long, 1 inch x 1 inch, blazed, painted, and tagged with BLM boundary signs.

The geographic position shown hereon was determined by a tie from a temporary GPS control point, utilizing dual frequency, carrier phase GPS receivers, and processed using the National Geodetic Survey's Online Positioning User Service (OPUS).

The survey was executed in accordance with the specifications set forth in the Manual of Surveying Instructions (2009), and the Special Instructions approved August 22, 2016, for Group No. 2853, Oregon, by Ernest Q. Lundeen, Cadastral Surveyor, beginning August 22, 2016, and completed August 31, 2016. He was assisted by Dale A. Mustain, Surveying Technician and Logan B. Downs, Surveying Aid.

- (A) The 1/4 sec. cor. of secs. 26 and 35, monumented with an iron post, 1 1/2 ins. diam., firmly set, projecting 15 ins. above ground with brass cap mkd.

COUNTY SURVEYORS OFFICE
 T 31 S R 9 W
 S 26
 1/4
 S 35
 1967

from which the remains of an original bearing tree

A decayed sawed fir stump, size indeterminate, bears N. 55° W., 19.8 ft. dist., with no marks visible.

and the remains of bearing trees mkd. by the Douglas County Surveyor's Office in 1967

A sawed fir stump with galvanized sheet steel cover, 20 ins. diam., bears S. 46° E., 14.6 ft. dist., with a healed blaze.

A live oak, 8 ins. diam., bears N. 47° W., 32.1 ft. dist., with a healed blaze. (Record, N. 45 1/2° W.)

and a bearing tree mkd. by Simon in 2010

A fir, 7 ins. diam., bears S. 69 1/4° E., 12.4 ft. dist., with illegible scribe marks visible on a partially healed blaze.

- (B) Point for the W 1/16 sec. cor. of secs. 26 and 35.

Set a stainless steel post, 28 ins. long, 2 1/2 ins. diam., 25 ins. in the ground, with brass cap mkd.

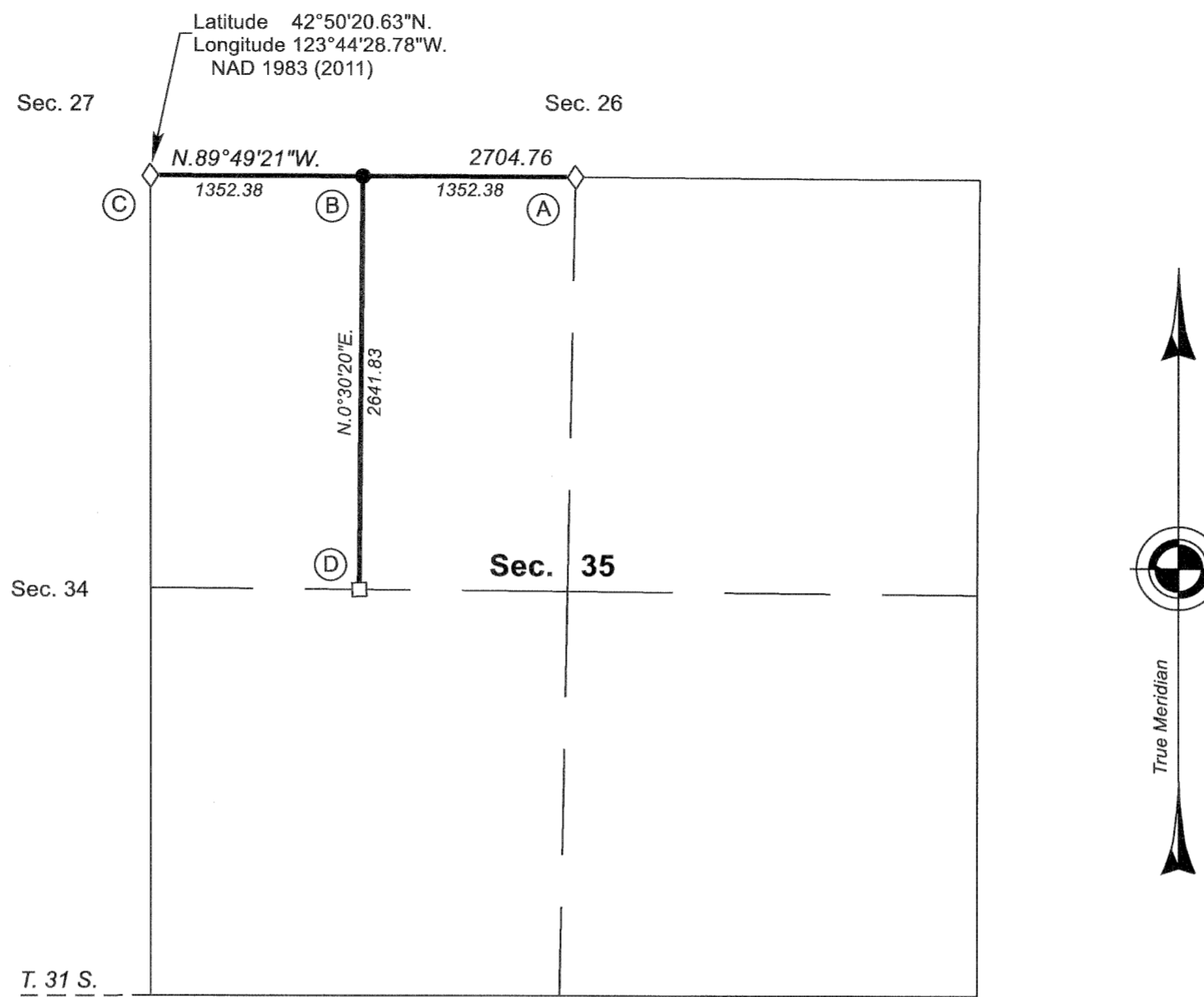
S 26
 W 1/16
 S 35
 2016

from which bearing trees mkd. by BLM during an administrative survey in 1982

A fir, 29 ins. diam., bears S. 36 1/2° W., 18.5 ft. dist., with a healed blaze. Add scribe marks W 1/16 S35 BT on new blaze.

A fir, 22 ins. diam., bears N. 32 3/4° W., 4.6 ft. dist., with a healed blaze. Add scribe marks W 1/16 S26 BT on new blaze.

Deposit a magnet in a white plastic case at the base of the stainless steel post.



- (C) The cor. of secs. 26, 27, 34, and 35, perpetuated by the Douglas County Surveyor's Office in 1967, as shown on the Douglas County Surveyor's Office renewal record in T. 31 S., R. 9 W., point identifier No. 500200; monumented with an iron post, 1 1/2 ins. diam., firmly set, projecting 11 ins. above ground with brass cap mkd.

COUNTY SURVEYORS OFFICE
 T 31 S R 9 W
 S 27 | S 26
 S 34 | S 35
 1967

from which original bearing trees

A fir, 40 ins. diam., bears S. 2° E., 23.0 ft. dist., with a healed double blaze. (Record, 24.4 ft.)

A fir, 28 ins. diam., bears S. 63 1/4° W., 30.2 ft. dist., with a healed blaze. (Record, S. 65 W., 31.7 ft.)

and bearing trees mkd. by the Douglas County Surveyor's Office

A cedar, 15 ins. diam., bears N. 83° E., 11.8 ft. dist., with a healed blaze.

A cedar, 14 ins. diam., bears N. 12 3/4° W., 13.3 ft. dist., with a healed blaze.

- (D) The center W 1/16 sec. cor. of sec. 35, monumented with a stainless steel post, 2 1/2 ins. diam., firmly set, projecting 3 ins. above ground with brass cap mkd.

W 1/16
 C S 35 C
 2010

from which the remains of bearing trees mkd. by Simon in 2010

A maple snag, 16 ins. diam., bears S. 2 1/2° W., 47.5 ft. dist., with scribe marks CW 1/16 S35 BT visible on open blaze, and a mag nail left side center.

A fir, 44 ins. diam., bears N. 36° W., 43.6 ft. dist., with no marks visible on a partially healed blaze.

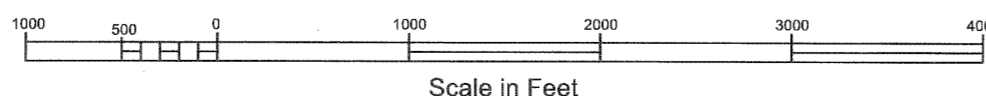
and a new bearing tree

A fir, 11 ins. diam., bears S. 26° W., 45.8 ft. dist., mkd. CW 1/16 S35 BT.

I, Ernest Q. Lundeen, Cadastral Surveyor, HEREBY CERTIFY upon honor, that in pursuance of special instructions bearing the approval date of the 22nd day of August, 2016, and the assignment instructions bearing the date of the 22nd day of August, 2016, I have dependently resurveyed a portion of the subdivisional lines and subdivided section 35, Township 31 South, Range 9 West, Willamette Meridian, Oregon, which is represented upon this plat as having been executed by me and under my direction; and that said survey has been made in strict conformity with said special instructions, the Manual of Surveying Instructions, and in the specific manner described on this plat.

Ernest Q. Lundeen
 Cadastral Surveyor

4/30/2018
 Date



LEGEND

- ◇ Original corner previously remonumented
- Corner previously established or reestablished
- Corner established or reestablished this survey

UNITED STATES DEPARTMENT OF THE INTERIOR
 BUREAU OF LAND MANAGEMENT

Portland, Oregon

The survey represented by this plat, having been correctly executed in accordance with the requirements of law and the regulations of this Bureau, is hereby accepted.

For the Director
Mary J. M. Harts
 Chief Cadastral Surveyor of Oregon

May 7, 2018
 Date

OFFICIALLY FILED: 6/13/2018