

TOWNSHIP 31 SOUTH, RANGE 9 WEST, OF THE WILLAMETTE MERIDIAN, OREGON

DEPENDENT RESURVEY

FILED
 Date: 9/6/2018 By: JC
 This survey consists of:
 Map: T31-9W 2018-1
 Narrative: VOL 59 PAGES
 Corner Rpt: 23579-23586

DOUGLAS COUNTY
 SURVEYOR

A history of surveys, corner descriptions, and other relevant information are contained in the field notes.

This plat represents the dependent resurvey of a portion of the south boundary and subdivisional lines, designed to restore the corners in their true original locations according to the best available evidence, Township 31 South, Range 9 West, Willamette Meridian, Oregon.

The lottings and areas are as shown on the plats approved April 3, 1902 and June 29, 1918.

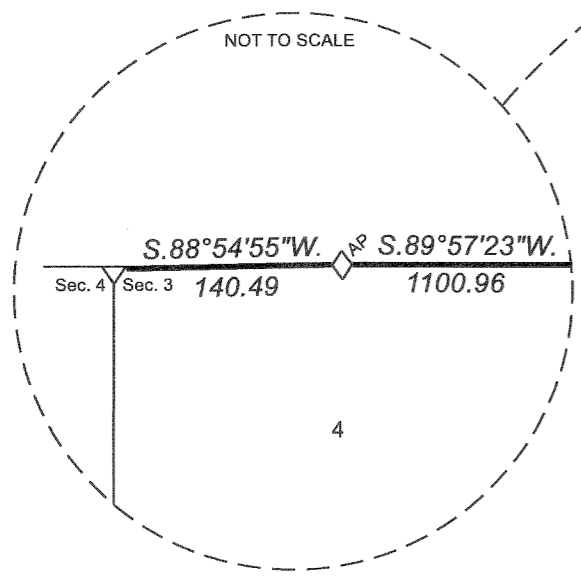
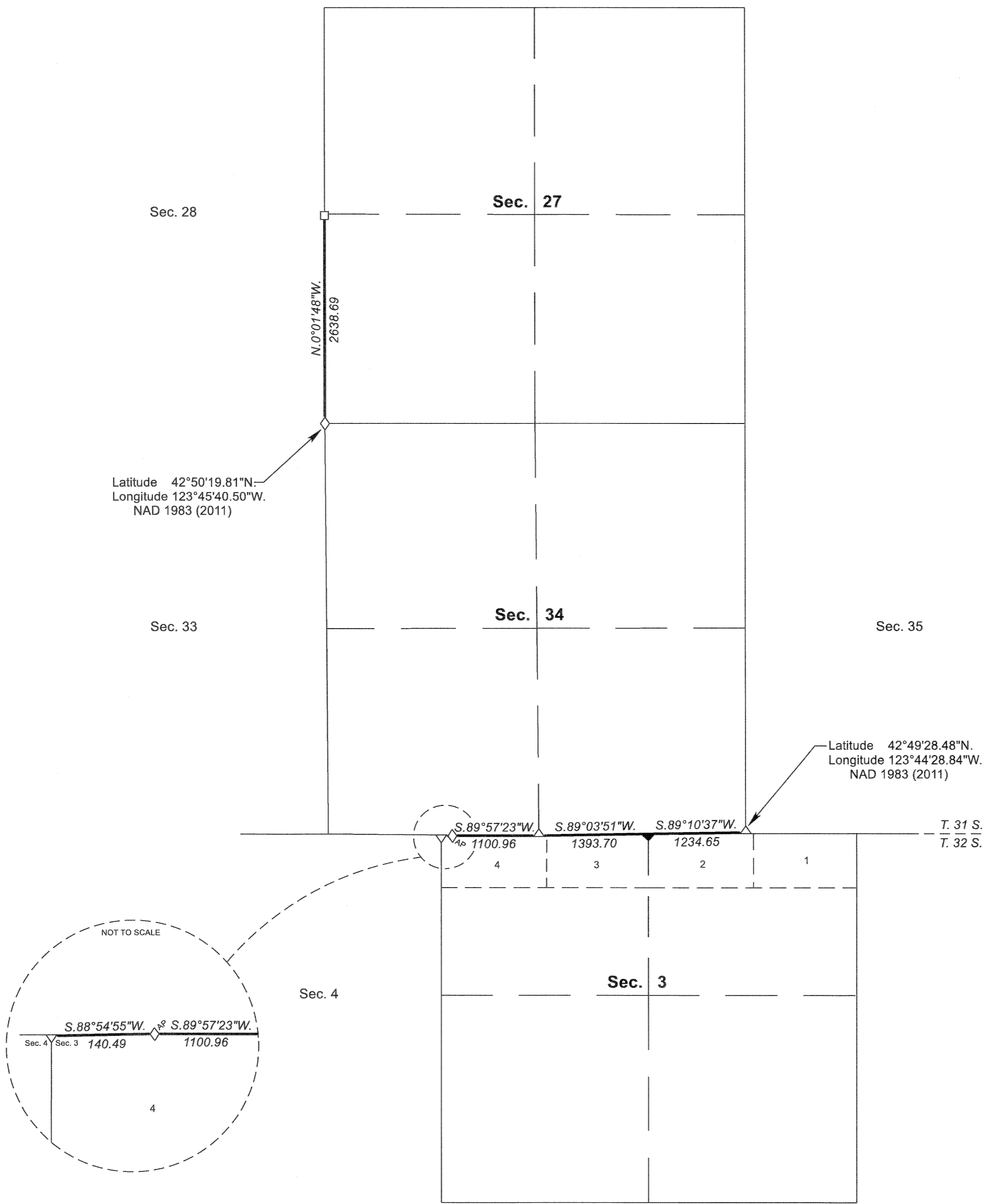
Survey executed by Kevin G. Mulder, Cadastral Surveyor, beginning November 28, 2016, and completed December 5, 2016, pursuant to special instructions approved November 23, 2016, for Group No. 2862, Oregon.

OFFICIALLY FILED: 6/13/2018



Latitude 42°50'19.81"N.
 Longitude 123°45'40.50"W.
 NAD 1983 (2011)

Latitude 42°49'28.48"N.
 Longitude 123°44'28.84"W.
 NAD 1983 (2011)



LEGEND

- ◊ Original corner previously remonumented
- ◆ Original corner remonumented this survey
- Corner previously established or reestablished

UNITED STATES DEPARTMENT OF THE INTERIOR
 BUREAU OF LAND MANAGEMENT
 Portland, Oregon

This plat is strictly conformable to the approved field notes, and the survey, having been correctly executed in accordance with the requirements of law and the regulations of this Bureau, is hereby accepted.

For the Director
Mary J. M. Hartsel
 Chief Cadastral Surveyor of Oregon

April 23, 2018
 Date

