

FILED

Date: 8/21/2017 By: JC
 This survey consists of:
 Map: PLAT: T31-9 2017-1 (3 PGS)
 Narrative: VOL. 58 PAGES
 Corner Rpt: 23440-23442
NO SEPARATE LINE NOTES
 ALL INFORMATION IS ON THE PLAT
DOUGLAS COUNTY
 SURVEYOR

TOWNSHIP 31 SOUTH, RANGE 9 WEST, OF THE WILLAMETTE MERIDIAN, OREGON

SHEET 1 OF 3

DEPENDENT RESURVEY AND SUBDIVISION OF SECTION 21

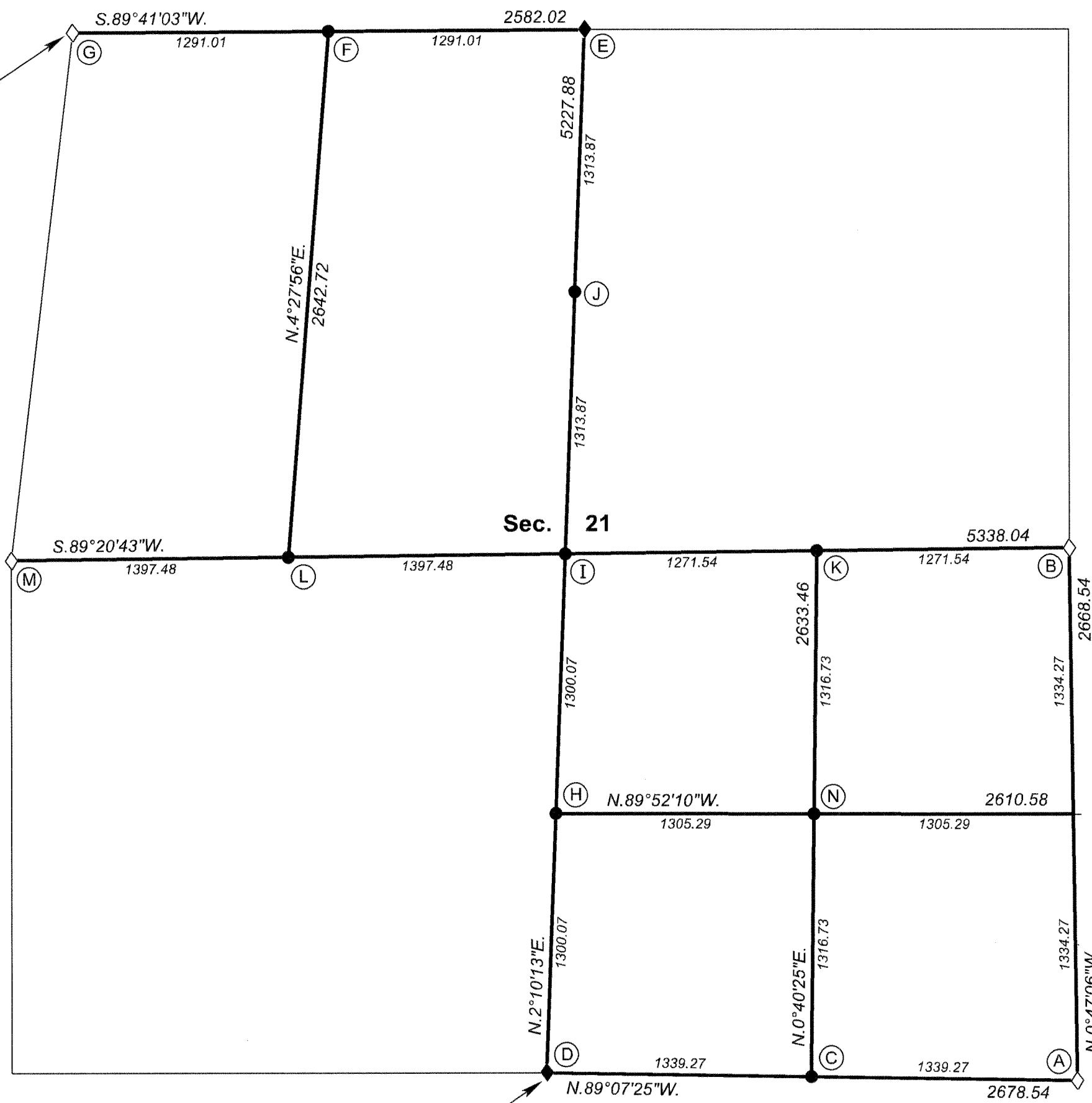
Sec. 17

Sec. 16

Latitude 42°52'03.82"N.
 Longitude 123°46'48.50"W.
 NAD 1983 (2011)



Sec. 20



Latitude 42°51'12.37"N.
 Longitude 123°46'16.49"W.
 NAD 1983 (2011)

Sec. 28

Sec. 22

Sec. 27

This plat constitutes the entire record of the dependent resurvey of a portion of the subdivisional lines, designed to restore the corners in their true original locations according to the best available evidence, and the subdivision of section 21, Township 31 South, Range 9 West, Willamette Meridian, Oregon.

The history of official surveys pertaining to this survey is as follows:

In 1901, William H. Byars, U.S. Deputy Surveyor, surveyed the subdivisional lines, as shown on the official plat of survey approved April 3, 1902, and accepted February 11, 1903.

In 1973, Lynn M. Roseberry, Cadastral Surveyor, dependently resurveyed a portion of the subdivisional lines, as shown on the official plat of survey accepted September 14, 1977.

The following local surveys filed in the Douglas County Surveyor's Office are referred to in the subsequent corner descriptions and are referenced by surveyor's last name, Professional Land Surveyor (PLS) No. or Professional Engineer (PE) No., and year.

Date	Name and Registration Number	File Number
1960	Lorne Van Swearingen, PE No. 4186	CS51/68
1960 & 1965	Clifford A. Stephens, PLS No. 238	M20-16
1967	Douglas County Surveyors Office	CS54/32
1985	Terrence Nickerson, PLS 1649	CS 62/24-2C

The directions of the lines are based on the true meridian as determined by Global Positioning System (GPS) techniques and direct solar observations and carried forward by sustained angulation using conventional survey techniques. All measurements along the lines were derived through the use of GPS and conventional survey techniques. Measured distances and directions have been adjusted by computer software that incorporates a least squares adjustment routine. The adjusted mean bearings and mean horizontal ground elevation distances are reported to the nearest second and 0.01 foot.

Official areas based on the measurements of this survey have been returned for Federal interest land where indicated. Aliquot part legal subdivisions retain their aliquot characteristics and refer to precisely the same land as that which was previously identified by its original survey or description. A lot can only be subdivided by survey or supplemental plat. Except as indicated hereon, the lottings and areas are as shown on the plat approved April 3, 1902.

Preliminary to the resurvey, the lines of the official original survey were retraced and a search was made for all corners, lines, other calls of record, and where available, collateral evidence of local surveys and corners. Identified corners were perpetuated in their original positions. The retracement data was thoroughly verified and only the true line field data are given hereon.

A magnet in a white plastic case was deposited at the base of each stainless steel post, and each new bearing tree has a 2 1/2 inch x 1/4 inch magnetic nail (Mag Nail) driven at the base on right side center, unless otherwise noted in the corner description. Aluminum angle irons were driven alongside each monument unless an existing guard post was otherwise noted in the corner description. Only those lines bounding Federal interest land were blazed.

The geographic position shown hereon was determined by a tie from a temporary GPS control point, established utilizing dual frequency, carrier phase GPS receivers, and processed using the National Geodetic Survey's Online Positioning User Service (OPUS).

The survey was executed in accordance with the specifications set forth in the Manual of Surveying Instructions (2009), and the special instructions approved July 9, 2015, for Group No. 2796, Oregon, by Edith M. Forkner, Cadastral Surveyor, beginning August 3, 2015, and completed March 9, 2016. She was assisted by Robert W. Femling and Kenneth W. Saveland, Cadastral Surveyors; and Jason H. Blum, Keith G. Felker, and Jacob M. Hunt, Surveying Technicians.

UNITED STATES DEPARTMENT OF THE INTERIOR
 BUREAU OF LAND MANAGEMENT

Portland, Oregon

The survey represented by this plat, having been correctly executed in accordance with the requirements of law and the regulations of this Bureau, is hereby accepted.

For the Director

Mary J. M. Hartzel

Chief Cadastral Surveyor of Oregon

February 9, 2017
 Date

I, Edith M. Forkner, Cadastral Surveyor, HEREBY CERTIFY upon honor, that in pursuance of special instructions bearing the approval date of the 9th day of July, 2015, and the assignment instructions bearing the date of the 9th day of July, 2015, I have dependently resurveyed a portion of the subdivisional lines and subdivided section 21, Township 31 South, Range 9 West, Willamette Meridian, Oregon, which is represented upon this plat as having been executed by me and under my direction; and that said survey has been made in strict conformity with said special instructions, the Manual of Surveying Instructions, and in the specific manner described on this plat.

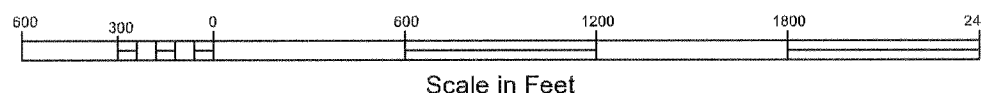
Edith Forkner
 Cadastral Surveyor

2-6-2017
 Date

LEGEND

- ◇ Original corner previously remonumented
- ◆ Original corner remonumented this survey
- Corner established or reestablished this survey
- + Corner point calculated, no monument set

LEGAL SUBDIVISION	OFFICIAL ACRES
SECTION 21	
SW1/4 SE1/4	39.71
TOTAL AREA	39.71
FEDERAL INTEREST LAND RESURVEYED	



OFFICIALLY FILED: 6/28/2017

TOWNSHIP 31 SOUTH, RANGE 9 WEST, OF THE WILLAMETTE MERIDIAN, OREGON

DEPENDENT RESURVEY AND SUBDIVISION OF SECTION 21

(A) The cor. of secs. 21, 22, 27, and 28, monumented with an iron post, 2 1/2 ins. diam., firmly set, projecting 7 ins. above ground, with a brass cap mkd.

T 31 S	R 9 W
S 21	S 22
S 28	S 27
1973	

from which the remains of the bearing trees mkd. by Roseberry in 1973

A roothole bears N. 17 1/2° E., 14.5 ft. dist., alongside of which is a down fir, 23 ins. diam., no marks visible.

A roothole bears S. 64 3/4° E., 44.9 ft. dist., alongside of which is a down fir, 17 ins. diam., no marks visible.

A decayed fir stump, 23 ins. diam., bears S. 62 1/2° W., 28.1 ft. dist., with remains of a healed blaze.

A decayed fir stump, 13 ins. diam., bears N. 45° W., 31.4 ft. dist., no marks visible.

and new accessories

A fir, 19 ins. diam., bears N. 80° E., 68.3 ft. dist., mkd. T31S R9W S22 BT.

A fir, 24 ins. diam., bears S. 50° E., 72.4 ft. dist., mkd. T31S R9W S27 BT.

An iron rod, 30 ins. long, 5/8 in. diam., set 26 ins. in the ground for a reference monument, bears S. 23° 45' 40" W., 17.50 ft. dist., with aluminum cap mkd. RM T31S R9W 17.5 FT TO COR S28 2015, and an arrow pointing to the cor.

A fir, 7 ins. diam., bears N. 44 1/4° W., 54.0 ft. dist., mkd. X BT.

Corner is located in fallen trees near the NE. cor. of timber, edge bears S. and E.; younger fir reproduction to the N. and W.

(B) The 1/4 sec. cor. of secs. 21 and 22, perpetuated by Swearingen, PE No. 4186, in 1960; further perpetuated by the Douglas County Surveyor's Office in 1967; from original evidence no longer in existence; monumented with an iron post, 1 1/2 ins. diam., firmly set, projecting 11 ins. above ground, with a brass cap mkd.

COUNTY	SURVEYORS	OFFICE
	T 31 S R 9 W	
	1/4 S 21 S 22	
	1967	

from which the remains of the bearing trees mkd. by Swearingen

A fir stump, 28 ins. diam., bears N. 35° E., 41.0 ft. dist., with a healed blaze.

A fir, 30 ins. diam., bears N. 29 1/2° W., 16.5 ft. dist., with a healed blaze.

and a new bearing tree

A fir, 6 ins. diam., bears S. 66° E., 22.8 ft. dist., mkd. X BT.

(C) Point for the E 1/16 sec. cor. of secs. 21 and 28.

Set a stainless steel post, 28 ins. long, 2 1/2 ins. diam., 23 ins. in the ground, with a brass cap mkd.

S 21
E 1/16
S 28
2015

from which

A fir, 18 ins. diam., bears S. 20° E., 41.8 ft. dist., mkd. E1/16 S28 BT.

A fir, 10 ins. diam., bears N. 63 1/4° W., 33.1 ft. dist., mkd. E1/16 S21 BT.

From the corner

N. 89° 07' 25" W., 80 ft. dist., ridge, bears N. and S.

(D) The 1/4 sec. cor. of secs. 21 and 28, perpetuated by the Douglas County Surveyor's Office in 1967; monumented with the remains of the original corner tree, a decayed fir stump, 36 ins. diam., with no marks visible, from which the remains of an original bearing tree

A decayed burned fir stump, 48 ins. diam., bears N. 44 1/2° W., 28.4 ft. dist., no marks visible. (Record, N. 40° W.)

and accessories mkd. by the Douglas County Surveyor's Office

An iron post, 1 1/2 ins. diam., firmly set, projecting 7 ins. above ground, bears N. 24° 53' 53" E., 2.02 ft. dist., with a brass cap mkd. COUNTY SURVEYORS OFFICE T31S R9W S21 1/4 S28 1967. Change cap marks to read COUNTY SURVEYORS OFFICE RM T31S R9W 1/4 2.0 FT TO COR S21 2015 1967 and an arrow pointing to the cor.

A fir high stump, 11 ins. diam., bears S. 8° E., 19.4 ft. dist., with a healed blaze.

A fir, 61 ins. diam., bears N. 38 1/2° W., 45.3 ft. dist., with a healed blaze.

At the corner point

Saw the stump of the original cor. tree to ground level on the uphill side and drive an iron rod, 30 ins. long, 5/8 in. diam., 29 ins. into stump, with an aluminum cap mkd.

T 31 S R 9 W
S 21
1/4
S 28
2015

and a new reference monument

An iron rod, 30 ins. long, 5/8 in. diam., set 28 ins. in the ground for a reference monument, bears S. 33° 49' 12" E, 26.74 ft. dist., with aluminum cap mkd. RM T31S R9W 1/4 S28 26.7 FT TO COR 2015, and an arrow pointing to the cor.

Corner is located on the S. edge of timber, edge bears E. and W.; young fir reproduction to the S.

(E) The 1/4 sec. cor. of secs. 16 and 21, perpetuated by Stephens, PLS No. 238, in 1965; from original evidence no longer in existence; monumented with an iron pipe, 1 in. diam., firmly set, projecting 20 ins. above ground, from which the remains of the bearing trees mkd. by Stephens

A fir stump, 60 ins. diam., bears N. 42 1/4° E., 70.9 ft. dist., with axe mark X.

A tin-capped fir high stump, 35 ins. diam., bears S. 54° E., 60.9 ft. dist., with scribe marks 4 CEC2 3 R9 BT and other illegible scribe marks visible on partially healed blaze.

and a bearing tree mkd. by person(s) unknown

A fir, 22 ins. diam., bears S. 80° E., 26.4 ft. dist., with a healed blaze.

At the corner point

Set a stainless steel post, 28 ins. long, 2 1/2 ins. diam., 23 ins. in the ground, directly over iron pipe, with a brass cap mkd.

T 31 S R 9 W
S 16
1/4
S 21
2015

and a new reference monument

An iron rod, 30 ins. long, 5/8 in. diam., set 27 ins. in the ground for a reference monument, bears N. 38° 09' 00" E., 23.08 ft. dist., with aluminum cap mkd. RM T31S R9W 1/4 S16 23.1 FT TO COR 2015, and an arrow pointing to the cor.

Corner is located on the S. edge of young fir reproduction, edge bears E. and W.

(F) Point for the W 1/16 sec. cor. of secs. 16 and 21.

Set a stainless steel post, 28 ins. long, 2 1/2 ins. diam., 25 ins. in the ground, with a brass cap mkd.

S 16
W 1/16
S 21
2015

from which

A fir, 11 ins. diam., bears S. 36° W., 32.4 ft. dist., mkd. W1/16 S21 BT.

A white fir, 10 ins. diam., bears N. 8° W., 20.4 ft. dist., mkd. W1/16 S16 BT.

FILED
Date: 8/21/2017 By: JC
This survey consists of:
Map: PLAT: T31-9 2017-1 (3 PGS)
Narrative: VOL. 58 PAGES
Corner Rpt: 23440-23442
NO SEPARATE LINE NOTES
ALL INFORMATION IS ON THE PLAT
DOUGLAS COUNTY
SURVEYOR

UNITED STATES DEPARTMENT OF THE INTERIOR
BUREAU OF LAND MANAGEMENT

Portland, Oregon

The survey represented by this plat, having been correctly executed in accordance with the requirements of law and the regulations of this Bureau, is hereby accepted.

For the Director

Mary J. M. Hartzel
Chief Cadastral Surveyor of Oregon

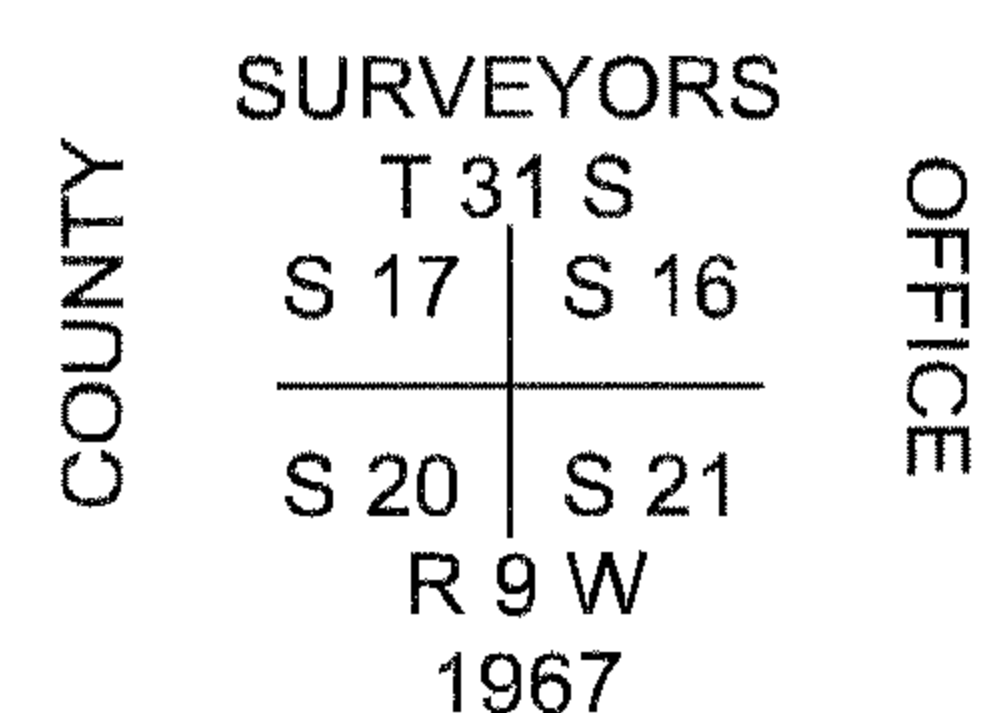
February 9, 2017
Date

OFFICIALLY FILED: 6/28/2017

TOWNSHIP 31 SOUTH, RANGE 9 WEST, OF THE WILLAMETTE MERIDIAN, OREGON

DEPENDENT RESURVEY AND SUBDIVISION OF SECTION 21

Ⓒ The cor. of secs. 16, 17, 20, and 21, perpetuated by the Douglas County Surveyor's Office in 1967; further perpetuated by Nickerson, PLS No. 1649, in 1985; monumented with an iron post, 1 1/2 ins. diam., firmly set, projecting 12 ins. above a collar of stone, 1 1/2 ft. base, 8 ins. high, with a brass cap mkd.



from which the remains of the original bearing trees

A decayed fir snag, 32 ins. diam., bears S. 38° E., 85.5 ft. dist., with illegible scribe marks visible on partially healed blaze. (Record and to face, 84.5 ft. dist.)

A broken-top fir, 48 ins. diam., bears S. 45° W., 66.0 ft. dist., with a healed blaze.

and the bearing trees mkd. by the Douglas County Surveyor's Office

A fir, 19 ins. diam., bears N. 25° E., 18.2 ft. dist., with a healed blaze.

A fir, 15 ins. diam., bears S. 45 1/4° E., 15.6 ft. dist., with a healed blaze.

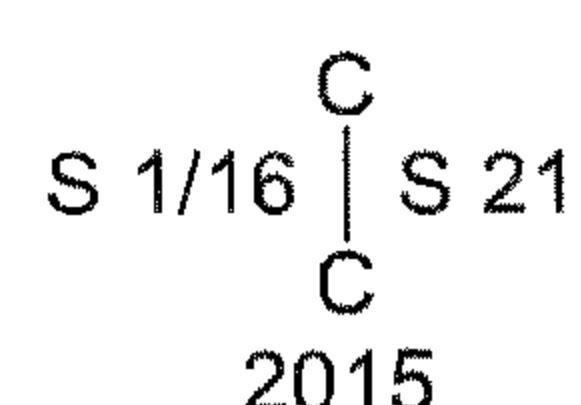
A fir, 10 ins. diam., bears S. 21 1/2° W., 29.1 ft. dist., with a healed blaze.

A fir, 24 ins. diam., bears N. 53° W., 17.7 ft. dist., with a healed blaze.

Corner is located between segments of a fallen decayed fir log, 4 ft. diam.

Ⓓ Point for the center S 1/16 sec. cor. of sec. 21.

Set a stainless steel post, 28 ins. long, 2 1/2 ins. diam., 22 ins. in the ground, with a brass cap mkd.



from which

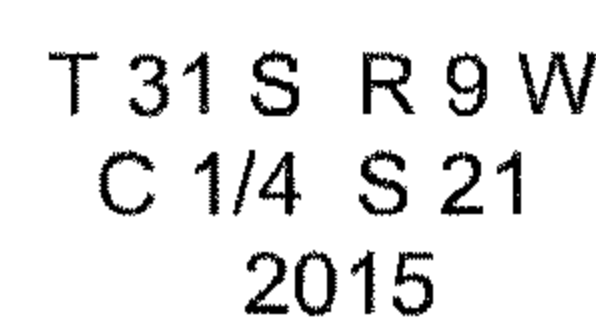
A live oak, 7 ins. diam., bears S. 44° E., 21.1 ft. dist., mkd. CS1/16 S21 BT on bark.

A fir, 20 ins. diam., bears N. 88° W., 36.2 ft. dist., mkd. CS1/16 S21 BT.

Corner is located on the NE. cor. of timber, edge bears S. and W.; older fir reproduction to the N. and E.

Ⓘ Point for the center 1/4 sec. cor. of sec. 21, at intersection of the N. and S. center line with the E. and W. center line of section 21.

Set a stainless steel post, 28 ins. long, 2 1/2 ins. diam., 24 ins. in the ground, with a brass cap mkd.



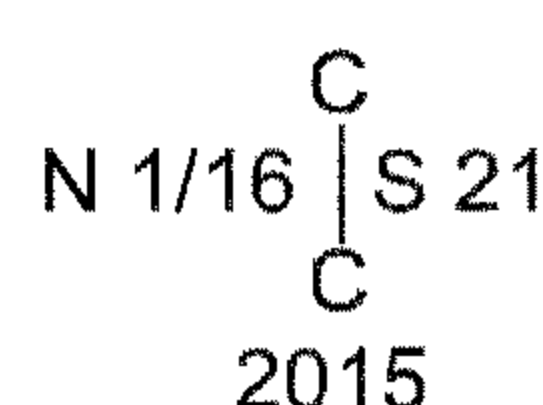
from which

A fir, 8 ins. diam., bears S. 37 1/2° E., 26.4 ft. dist., mkd. X BT.

A fir, 26 ins. diam., bears S. 26° W., 41.6 ft. dist., mkd. C1/4 S21 BT.

Ⓙ Point for the center N 1/16 sec. cor. of sec. 21.

Set a stainless steel post, 28 ins. long, 2 1/2 ins. diam., 25 ins. in the ground, with a brass cap mkd.



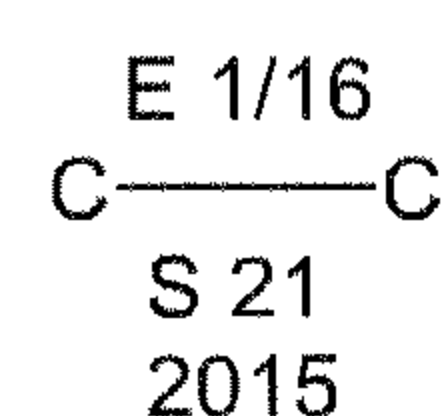
from which

A fir, 16 ins. diam., bears N. 6° E., 31.1 ft. dist., mkd. CN1/16 S21 BT.

A fir, 11 ins. diam., bears N. 85° W., 16.5 ft. dist., mkd. X BT.

Ⓚ Point for the center E 1/16 sec. cor. of sec. 21.

Set a stainless steel post, 28 ins. long, 2 1/2 ins. diam., 24 ins. in the ground, with a brass cap mkd.



from which

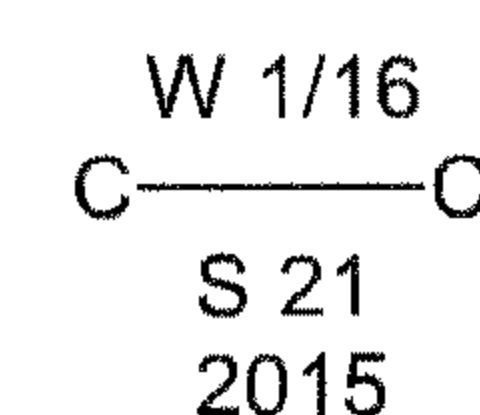
A fir, 25 ins. diam., bears N. 27 1/2° E., 23.1 ft. dist., mkd. CE1/16 S21 BT.

A fir, 10 ins. diam., bears S. 87° W., 26.0 ft. dist., mkd. X BT.

Deposit a Mag Nail at the base of the stainless steel post.

Ⓛ Point for the center W 1/16 sec. cor. of sec. 21.

Set a stainless steel post, 28 ins. long, 2 1/2 ins. diam., 23 ins. in the ground, with a brass cap mkd.



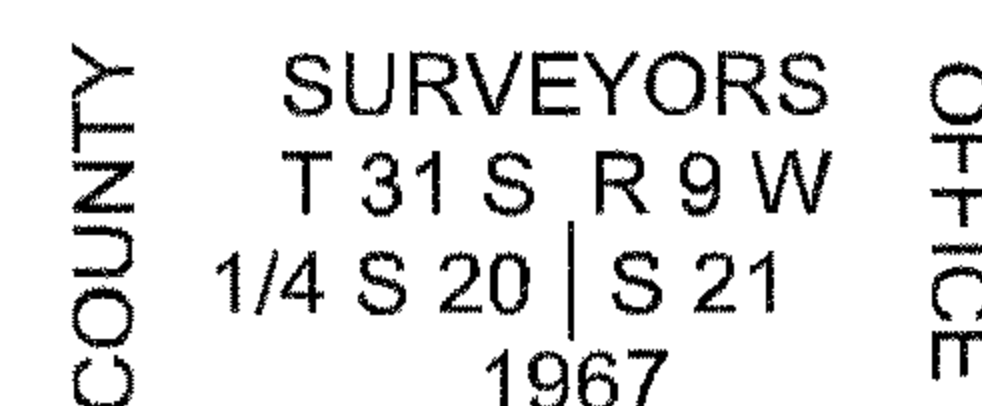
from which

An iron rod, 5/8 in. long, 5/8 in. diam., set 24 ins. in the ground for a reference monument, bears N. 65° 27' 39" E., 47.68 ft. dist., with aluminum cap mkd. RM S21 47.7 FT TO COR CW1/16 2015, and an arrow pointing to the cor.

A fir, 17 ins. diam., bears S. 56° W., 11.3 ft. dist., mkd. CW1/16 S21 BT.

Corner is located in a fill bank W., 25 ft. dist., from the center of a graveled road, 12 ft. wide, bears N. 40° W. and S. 30° E.

Ⓜ The 1/4 sec. cor. of secs. 20 and 21, perpetuated by the Douglas County Surveyor's Office in 1967; monumented with an iron post, 1 1/2 ins. diam., firmly set, projecting 12 ins. above ground, with a brass cap mkd.



from which the original bearing trees

A double madrone, 19 ins. diam., bears N. 25° E., 18.5 ft. dist., with no marks visible on the partially healed, decayed blaze of the northerly fork. (Record, laurel.)

A madrone, 15 ins. diam., bears S. 75° W., 37.0 ft. dist., with no marks visible on the partially healed blaze. (Record and slope distance, laurel, 40.3 ft. dist.) Tree is the southerly fork of a double; both forks have no marks visible on partially healed blazes.

and the bearing trees mkd. by the Douglas County Surveyor's Office

A fir, 18 ins. diam., bears S. 79° E., 13.3 ft. dist., with a healed double blaze.

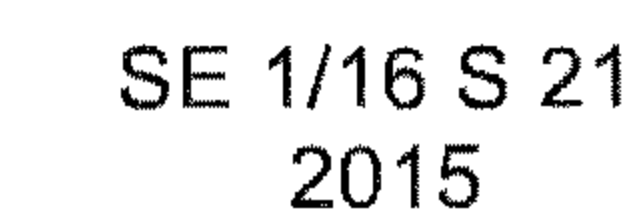
A chinquapin, 15 ins. diam., bears S. 31° W., 11.8 ft. dist., with a healed double blaze.

From the corner

South, 35 ft. dist., a rounded spur, slopes E.

Ⓝ Point for the SE 1/16 sec. cor. of sec. 21, at intersection of the N. and S. center line with the E. and W. center line of the SE 1/4 of section 21.

Set a stainless steel post, 28 ins. long, 2 1/2 ins. diam., 22 ins. in the ground, with a brass cap mkd.



from which

A fir, 12 ins. diam., bears N. 61 1/2° E., 13.0 ft. dist., mkd. X BT.

A fir, 28 ins. diam., bears N. 88° W., 17.1 ft. dist., mkd. SE1/16 S21 BT.

From the corner

S. 89° 52' 10" E, 55 ft. dist., grass covered road, 10 ft. wide, bears N. and S.

FILED

Date: 8/21/2017 By: JC

This survey consists of:

Map: PLAT: T31-9 2017-1 (3 PGS)

Narrative: VOL. 58 PAGES

Corner Rpt: 23440-23442

DOUGLAS COUNTY SURVEYOR

UNITED STATES DEPARTMENT OF THE INTERIOR
BUREAU OF LAND MANAGEMENT

Portland, Oregon

The survey represented by this plat, having been correctly executed in accordance with the requirements of law and the regulations of this Bureau, is hereby accepted.

For the Director

Mary J. M. Hattel
Chief Cadastral Surveyor of Oregon

February 9, 2017
Date

OFFICIALLY FILED: 6/28/2017