

TOWNSHIP 31 SOUTH, RANGE 9 WEST, OF THE WILLAMETTE MERIDIAN, OREGON

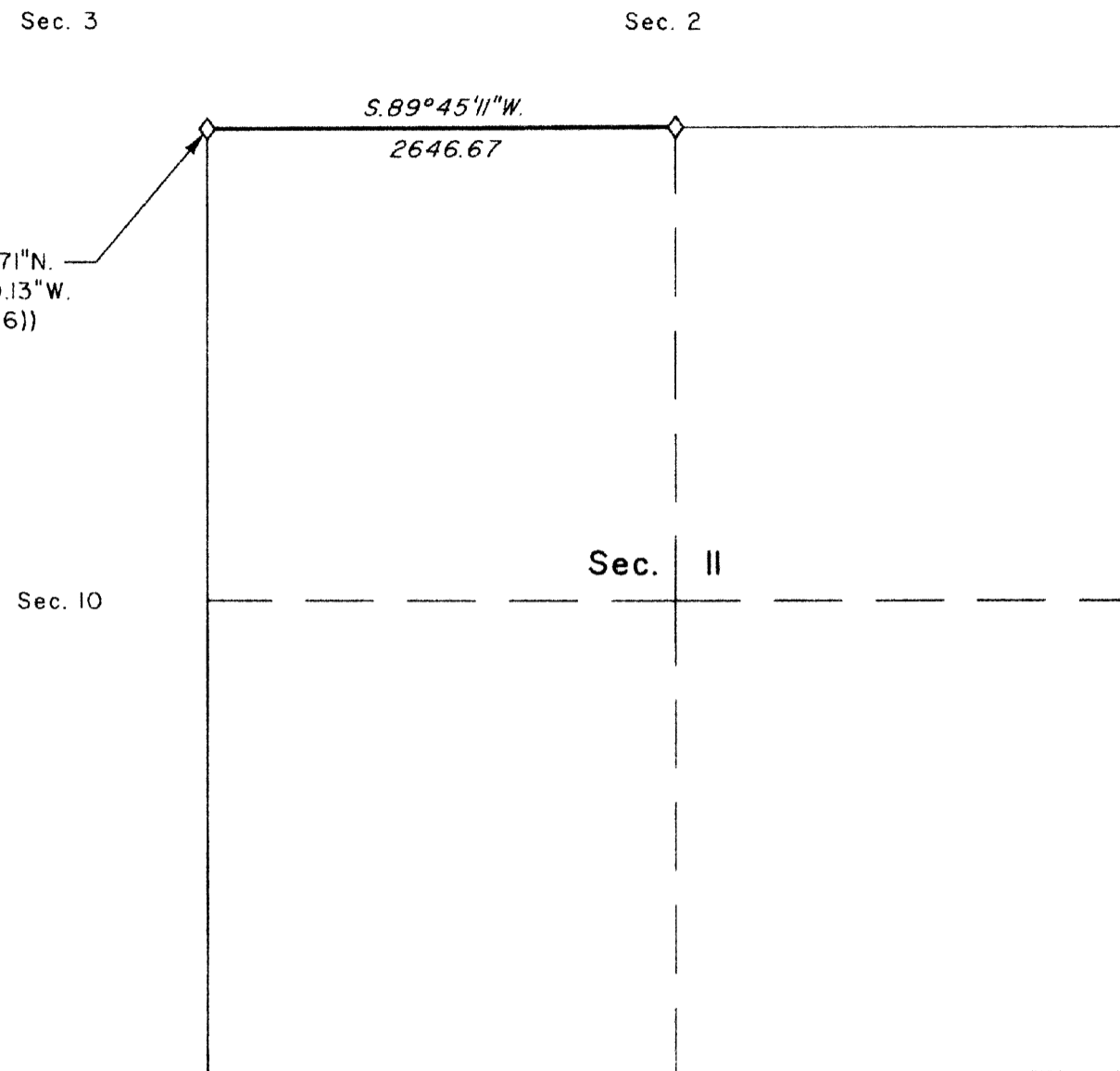
DEPENDENT RESURVEY AND SUBDIVISION OF SECTION 35

FILED
 Date: 1/25/2012 By: JC
 This survey consists of:
 Map: 2011-1
 Narrative: VOL 57
 Corner Rpt: PGS 22753-62

DOUGLAS COUNTY
 SURVEYOR



Latitude 42°53'48.71"N.
 Longitude 123°44'30.13"W.
 (NAD 1983 (CORS 96))

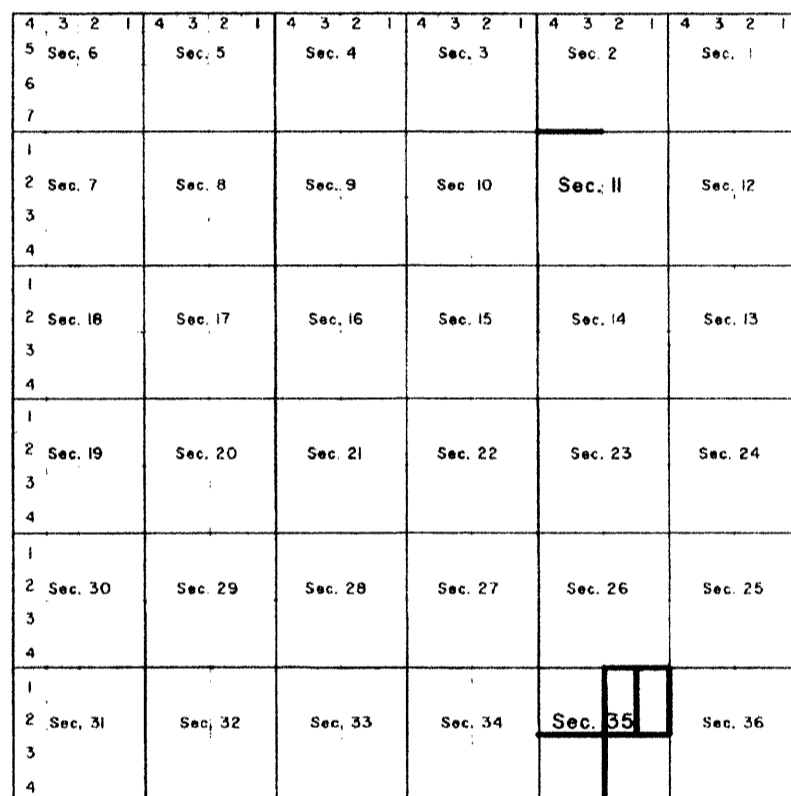


A history of surveys, corner descriptions and other relevant information is contained in the field notes.

This plat represents the dependent resurvey of a portion of the subdivisional lines, designed to restore the corners in their true original locations according to the best available evidence, and the subdivision of section 35, T. 31 S., R. 9 W., Willamette Meridian, Oregon.

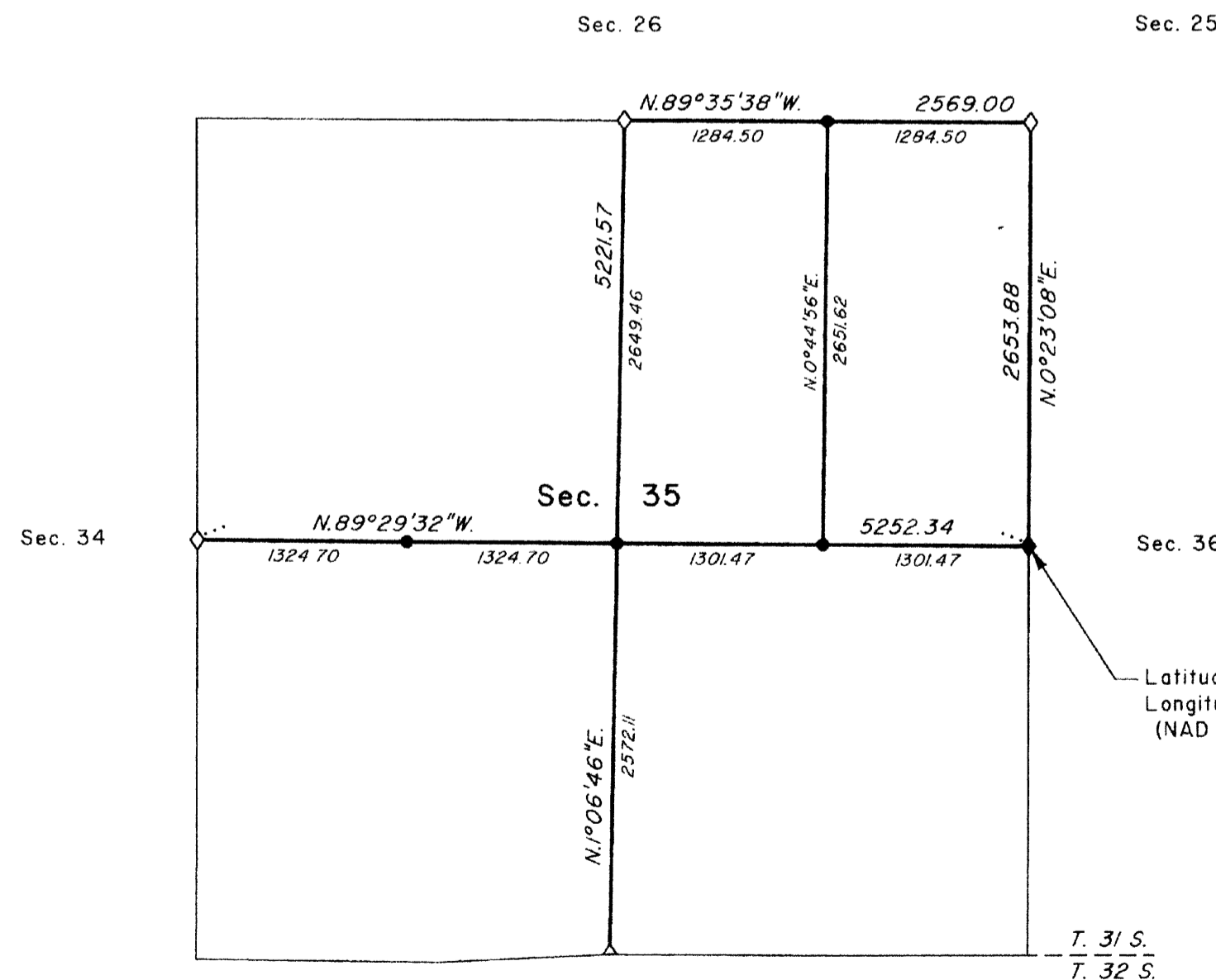
Official areas based on the measurements of this survey have been returned for Federal interest land where indicated. Aliquot part legal subdivisions retain their aliquot characteristics and refer to precisely the same land as that which was previously identified by its original survey or description. A lot can only be subdivided by survey or supplemental plat. Except as indicated hereon, the lottings and areas are as shown on the plat approved April 3, 1902 and accepted February 11, 1903.

Survey executed by Francis J. Simon, Cadastral Surveyor, beginning July 7, 2010 and completed November 3, 2010, pursuant to special instructions dated June 22, 2010, for Group No. 2325, Oregon.



LOCATION DIAGRAM
 (NOT TO SCALE)

LEGAL SUBDIVISION	OFFICIAL ACRES
SECTION 35	
NE 1/4 NE 1/4	39.24
SE 1/4 NE 1/4	39.50
TOTAL AREA FEDERAL INTEREST LAND RESURVEYED	78.74



Latitude 42°49'54.15"N.
 Longitude 123°43'18.24"W.
 (NAD 1983 (CORS 96))

LEGEND

- ◊ Original corner previously remonumented
- ◆ Original corner remonumented this survey
- Corner established this survey

UNITED STATES DEPARTMENT OF THE INTERIOR
 BUREAU OF LAND MANAGEMENT

Portland, Oregon

This plat is strictly conformable to the approved field notes, and the survey, having been correctly executed in accordance with the requirements of law and the regulations of this Bureau, is hereby accepted.

For the Director

Maury J. M. Hartsel

Chief Cadastral Surveyor of Oregon

November 16, 2011

Date



Scale in Feet

OFFICIALLY FILED: 12/15/2011