

TOWNSHIP 31 SOUTH, RANGE 8 WEST, OF THE WILLAMETTE MERIDIAN, OREGON

DEPENDENT RESURVEY

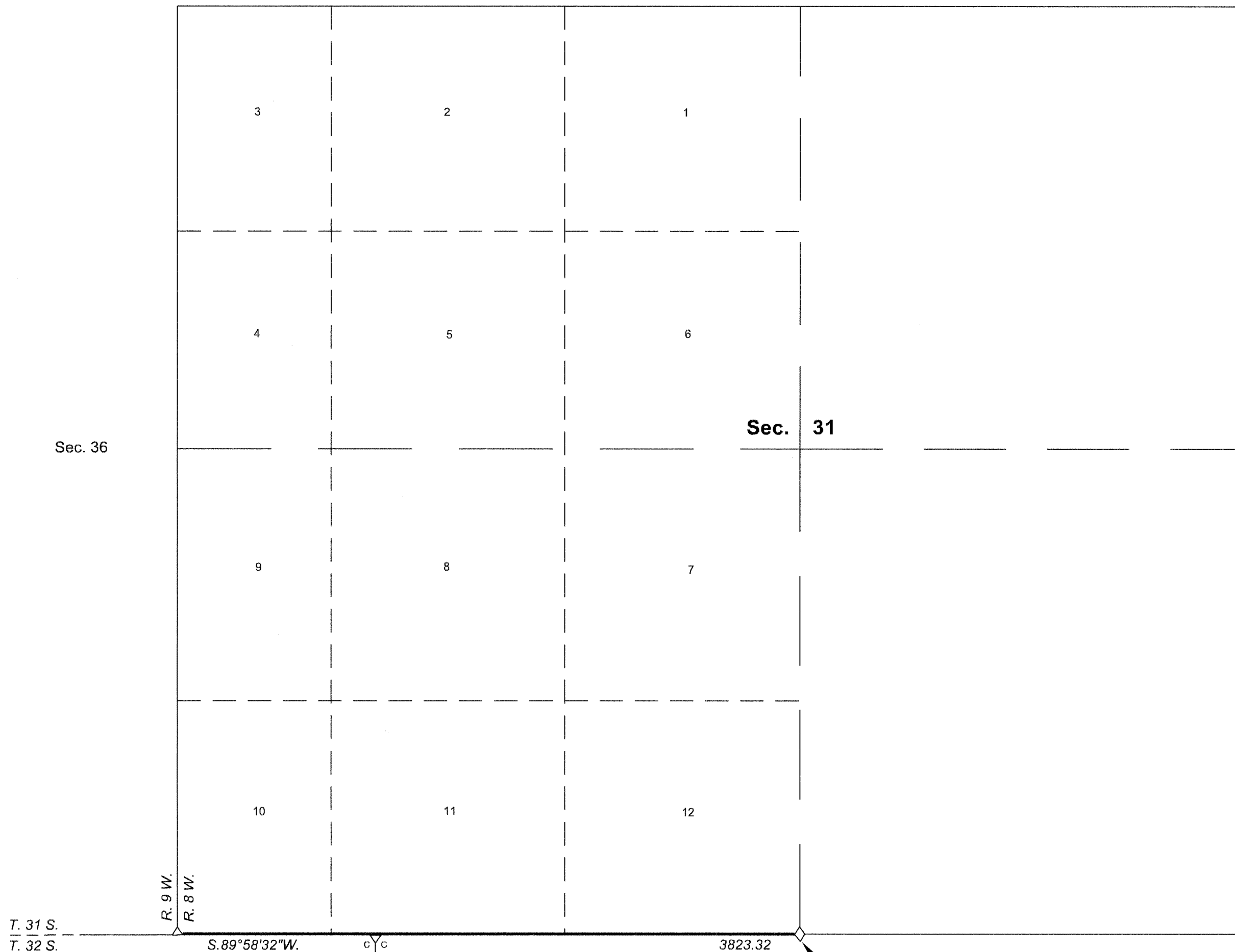
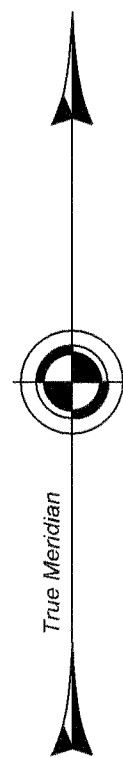
FILED
Date: 8/21/2017 By: JC
This survey consists of:
Map: PLAT: T31-8 2017-1
Narrative: VOL. 58 PAGES
Corner Rpt: 23428-23432
DOUGLAS COUNTY
SURVEYOR

A history of surveys, corner descriptions, and other relevant information are contained in the field notes.

This plat represents the dependent resurvey of a portion of the south boundary, designed to restore the corners in their true original locations according to the best available evidence, Township 31 South, Range 8 West, Willamette Meridian, Oregon.

The lottings and areas are as shown on the plat approved July 28, 1883.

Survey executed by Ernest Q. Lundeen, Cadastral Surveyor, beginning July 28, 2015, and completed August 3, 2015, pursuant to special instructions approved July 23, 2015, for Group No. 2797, Oregon.



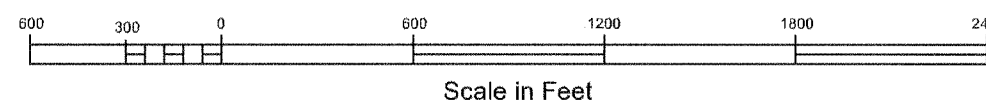
LEGEND
◇ Original corner previously remonumented

UNITED STATES DEPARTMENT OF THE INTERIOR
BUREAU OF LAND MANAGEMENT
Portland, Oregon

This plat is strictly conformable to the approved field notes, and the survey, having been correctly executed in accordance with the requirements of law and the regulations of this Bureau, is hereby accepted.

For the Director
Mary J. M. Hartzel
Chief Cadastral Surveyor of Oregon

February 9, 2017
Date



OFFICIALLY FILED: 6/28/2017