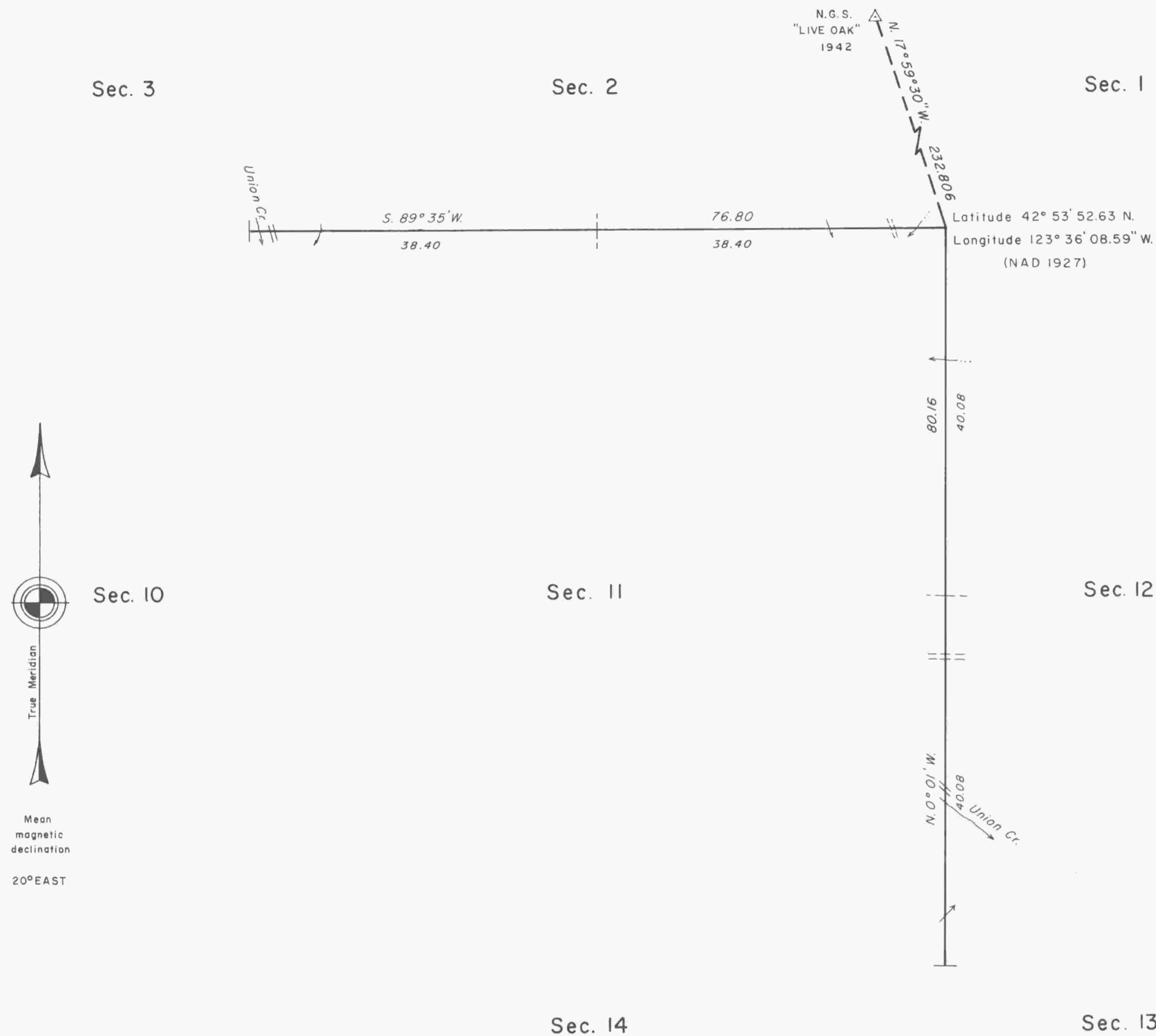


TOWNSHIP 31 SOUTH, RANGE 8 WEST, OF THE WILLAMETTE MERIDIAN, OREGON

DEPENDENT RESURVEY



A history of surveys is contained in the field notes.

This plat represents a dependent resurvey of a portion of the subdivisional lines, T. 31 S., R. 8 W., Willamette Meridian, Oregon, designed to restore the corners in their true original locations according to the best available evidence.

The survey was executed by Dale T. Bedell, Cadastral Surveyor, beginning August 11, 1986, and completed November 21, 1986, pursuant to Special Instructions dated July 14, 1986, under Group Number 1338, Oregon.

Timber in this area consists of fir, hemlock, cedar, pine, yew, maple, chinquapin, oak, madrone, myrtle and alder.



20° EAST



UNITED STATES DEPARTMENT OF THE INTERIOR
BUREAU OF LAND MANAGEMENT

Portland, Oregon July 7, 1989

This plat is strictly conformable to the approved field notes, and the survey, having been correctly executed in accordance with the requirements of law and the regulations of this Bureau, is hereby accepted.

For the Director:

Wayne M. Gardner

Chief Cadastral Surveyor of Oregon