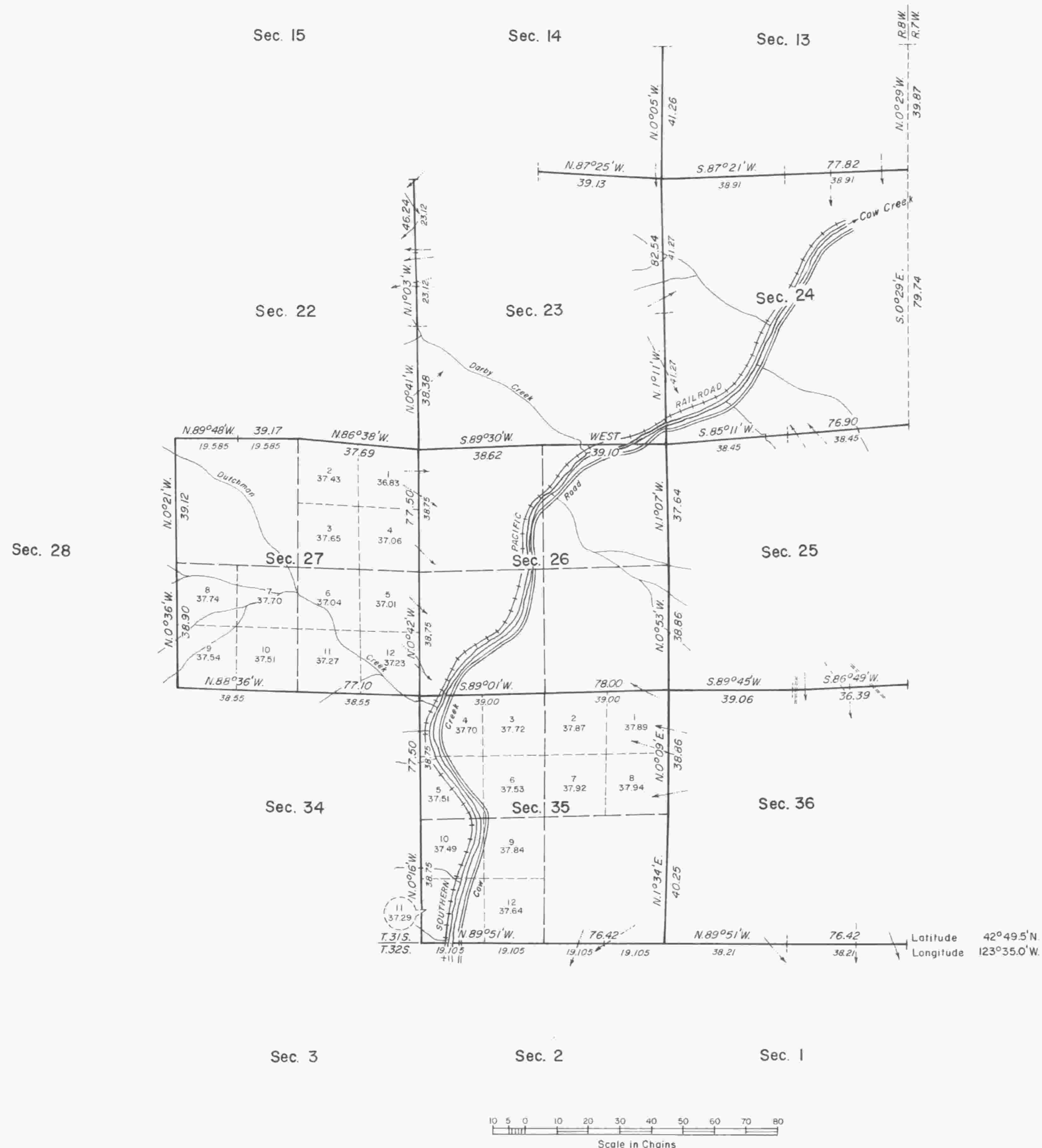


TOWNSHIP 31 SOUTH, RANGE 8 WEST, OF THE WILLAMETTE MERIDIAN, OREGON.

DEPENDENT RESURVEY



A history of surveys is contained in the field notes.

This plat represents the dependent resurvey of a portion of the south boundary and subdivisional lines, designed to restore the corners in their true original locations according to the best available evidence, T. 31 S., R. 8 W., Willamette Meridian, Oregon.

Except as indicated hereon, the lottings and areas are as shown on the plat approved July 28, 1883.

Survey executed by James E. Jelley and James J. Carlson, Cadastral Surveyors, beginning August 3, 1976, and completed November 11, 1977, pursuant to Special Instructions dated July 22, 1976, for Group No. 899, Oregon.

UNITED STATES DEPARTMENT OF THE INTERIOR
BUREAU OF LAND MANAGEMENT
Denver, Colorado April 24, 1980

This plat is strictly conformable to the approved field notes, and the survey, having been correctly executed in accordance with the requirements of law and the regulations of this Bureau, is hereby accepted.

For the Director

Chief, Cadastral Survey
Examination and Approval Staff

Timber in this area consists of fir, hemlock, cedar, pine, maple, madrone, myrtle, alder, live oak, and chinquapin.