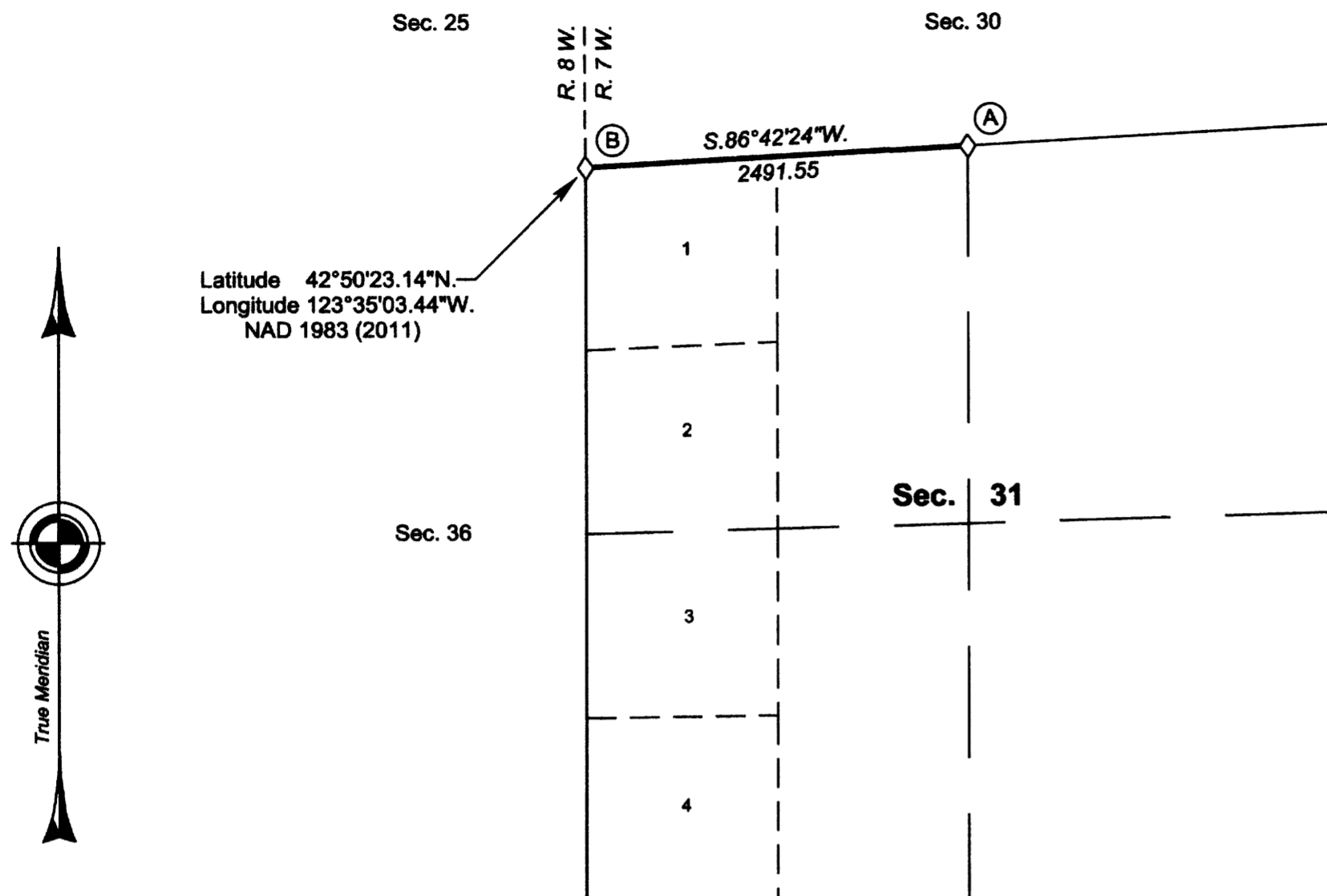


TOWNSHIP 31 SOUTH, RANGE 7 WEST, OF THE WILLAMETTE MERIDIAN, OREGON

RETRACEMENT



Latitude 42°50'23.14"N.
Longitude 123°35'03.44"W.
NAD 1983 (2011)



FILED
Date: 5/8/2015 By: JC
This survey consists of:
Map: T31-7W 2015-1
Narrative: VOL. 58 PGS 23206
Corner Rpt: THIS PLAT REPRESENTS THE ENTIRE RECORD OF THE DEPENDENT RESURVEY
DOUGLAS COUNTY SURVEYOR

LEGEND
◊ Original corner previously remonumented

I, Brandon G. Courtright, Cadastral Surveyor, HEREBY CERTIFY upon honor, that in pursuance of special instructions bearing the approval date of the 28th day of April, 2010, and the assignment instructions bearing the date of the 1st day of June, 2014, I have retraced a portion of the subdivisional lines, Township 31 South, Range 7 West, Willamette Meridian, Oregon, which is represented upon this plat as having been executed by me and under my direction; and that said survey has been made in strict conformity with said special instructions, the Manual of Surveying Instructions, and in the specific manner described on this plat. (Mr. Courtright was not available for signature)

Mary J. M. Hentel
Chief Cadastral Surveyor of Oregon

February 25, 2015
Date



(A) The 1/4 sec. cor. of secs. 30 and 31, perpetuated by the Douglas County Surveyor's Office in 1965, further perpetuated by Smalley, PLS No. 2354, in 2000, monumented with an iron post, 1 1/2 ins. diam., firmly set, projecting 13 ins. above the ground, with brass cap mkd.

COUNTY SURVEYORS OFFICE
T31S
S30
1/4
S31
R7W
1965

from which the remains of the original bearing trees

A burnt fir snag, 43 ins. diam., bears S. 70° W., 38.3 ft. dist., with a healed double blaze.

and the remains of the bearing trees mkd. by the Douglas County Surveyor's Office

A burnt fir snag, 16 ins. diam., bears N. 11 1/4° E., 2.2 ft. dist., with a healed blaze.

A burnt fir snag, 12 ins. diam., bears S. 72 1/2° E., 38.5 ft. dist., with a healed double blaze

and the remains of the bearing tree mkd. by Smalley

A burnt fir snag, 9 ins. diam., bears S. 23 3/4° E., 19.1 ft. dist., with a healed blaze.

and new accessories

A rebar, 30 ins. long, 5/8 in. diam., driven 26 ins. in the ground for a reference monument, bears S. 63° 15' 08" W., 33.58 ft. dist., with an aluminum cap mkd. RM T31S R7W 1/4 S31 33.58 FT TO COR 2014, and an arrow pointing to the cor.

A rebar, 30 ins. long, 5/8 in. diam., driven 22 ins. in the ground for a reference monument, bears N. 43° 21' 39" W., 26.03 ft. dist., with an aluminum cap mkd. T31S R7W 1/4 S30 26.03 FT TO COR 2014, and an arrow pointing to the cor.

(B) The cor. of secs. 25, 30, 31, and 36, on the W. bdy. of the Tp., monumented with an iron post, 1 1/2 ins. diam., firmly set, projecting 12 ins. above the ground, with brass cap mkd.

COUNTY SURVEYORS OFFICE
T31S
R S 25 | S 30 R
8 | 7
W S 36 | S 31 W
1970

from which the remains of the original bearing trees

A burnt pine stump, size indeterminate, bears S. 68° E., 80.5 ft. dist., with no marks visible.

A burnt pine stump, 48 ins. diam., bears S. 63° W., 167.1 ft. dist., with no marks visible. (Record, S. 53 1/2° W., 165.0 ft.)

and the remains of the bearing trees mkd. by the Douglas County Surveyor's Office in 1970 reported by Jelley and Carlson in 1976-77 (Record, Byron)

A burnt fir snag, 16 ins. diam., bears N. 24° E., 22.4 ft. dist., with a healed blaze.

A roothole bears S. 27° E., 17.8 ft. dist., with a fir trunk, 27 ins. diam., lying alongside, with no marks visible.

A roothole bears N. 19° W., 22.4 ft. dist., with a burnt fir trunk, 22 ins. diam., lying alongside, with a healed blaze.

and new accessories

A rebar, 30 ins. long, 5/8 in. diam., driven 22 ins. in the ground for a reference monument, bears N. 48° 55' 09" E., 18.17 ft. dist., with an aluminum cap mkd. RM T31S R7W S30 18.17 FT TO COR 2014, and an arrow pointing to the cor.

A rebar, 30 ins. long, 5/8 in. diam., driven 21 ins. in the ground for a reference monument, bears S. 52° 38' 00" E., 23.51 ft. dist., with an aluminum cap mkd. T31S R7W S31 23.51 FT TO COR 2014, and an arrow pointing to the cor.

Alongside the cor. is an aluminum fence post.

This plat constitutes the entire record of the retracement of a portion of the subdivisional lines, Township 31 South, Range 7 West, Willamette Meridian, Oregon.

A history of official surveys pertaining to this retracement is as follows:

In 1882, William H. Byars, U.S. Deputy Surveyor, surveyed the west boundary and subdivisional lines, as shown on the official plat of survey approved October 5, 1882.

In 1976-77, James E. Jelley and James J. Carlson, Cadastral Surveyors, resurveyed a portion of the south boundary and subdivisional lines of T. 31 S., R. 8 W., as shown on the official plat of survey accepted April 24, 1980.

The following local surveys in the Douglas County Surveyor's Office are referred to in the subsequent corner descriptions and are referenced by surveyor's last name, official title or Professional Land Surveyor (PLS) No., and year.

Date	Name and Registration Number	File Number
1965	Douglas County Surveyor's Office	C.S. 54/3
1970	Douglas County Surveyor's Office	C.S. 54/36
2000	Mark F. Smalley, PLS No. 2354	C.S. 65/30-3

The direction of the line is based on the true meridian as determined by Global Positioning Systems (GPS) techniques and carried forward by sustained angulation using conventional survey techniques. All measurements along the lines were derived through the use of GPS and conventional survey techniques. Measured distances and directions have been adjusted by computer software that incorporates a least squares adjustment routine. The adjusted mean bearings and mean horizontal ground elevation distances are reported to the nearest second and 0.01 foot.

The lottings and areas are as shown on the plat approved October 5, 1882.

The lines of the official original survey were retraced and a search was made for all corners, lines, other calls of record, and where available, collateral evidence of local surveys and corners. The retracement data were thoroughly verified and only the true line field data are given hereon.

The geographic position shown hereon was determined by a tie from a temporary GPS control point, utilizing dual frequency, carrier phase GPS receivers, and processed using the National Geodetic Survey's Online Positioning User Service (OPUS).

The survey was executed in accordance with the specifications set forth in the Manual of Surveying Instructions (2009), and the special Instructions approved April 28, 2010, for Group No. 2500, Administrative File No. 1407, Oregon, by Brandon G. Courtright, Cadastral Surveyor, beginning July 18, 2014, and completed July 23, 2014. He was assisted by Ernest Q. Lundeen, Cadastral Surveyor, and Nicholas K. Aldersebaes, Surveying Technician.

UNITED STATES DEPARTMENT OF THE INTERIOR
BUREAU OF LAND MANAGEMENT

Portland, Oregon

The survey represented by this plat, having been correctly executed in accordance with the requirements of law and the regulations of this Bureau, is hereby accepted.

For the Director
Mary J. M. Hentel
Chief Cadastral Surveyor of Oregon

February 25, 2015
Date

OFFICIALLY FILED: 4/20/2015