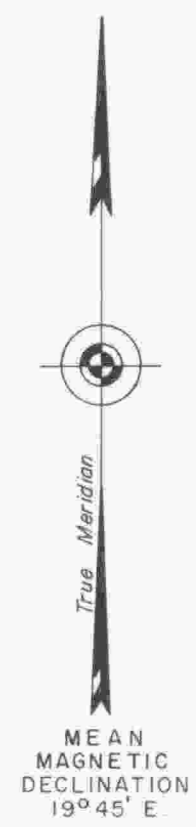
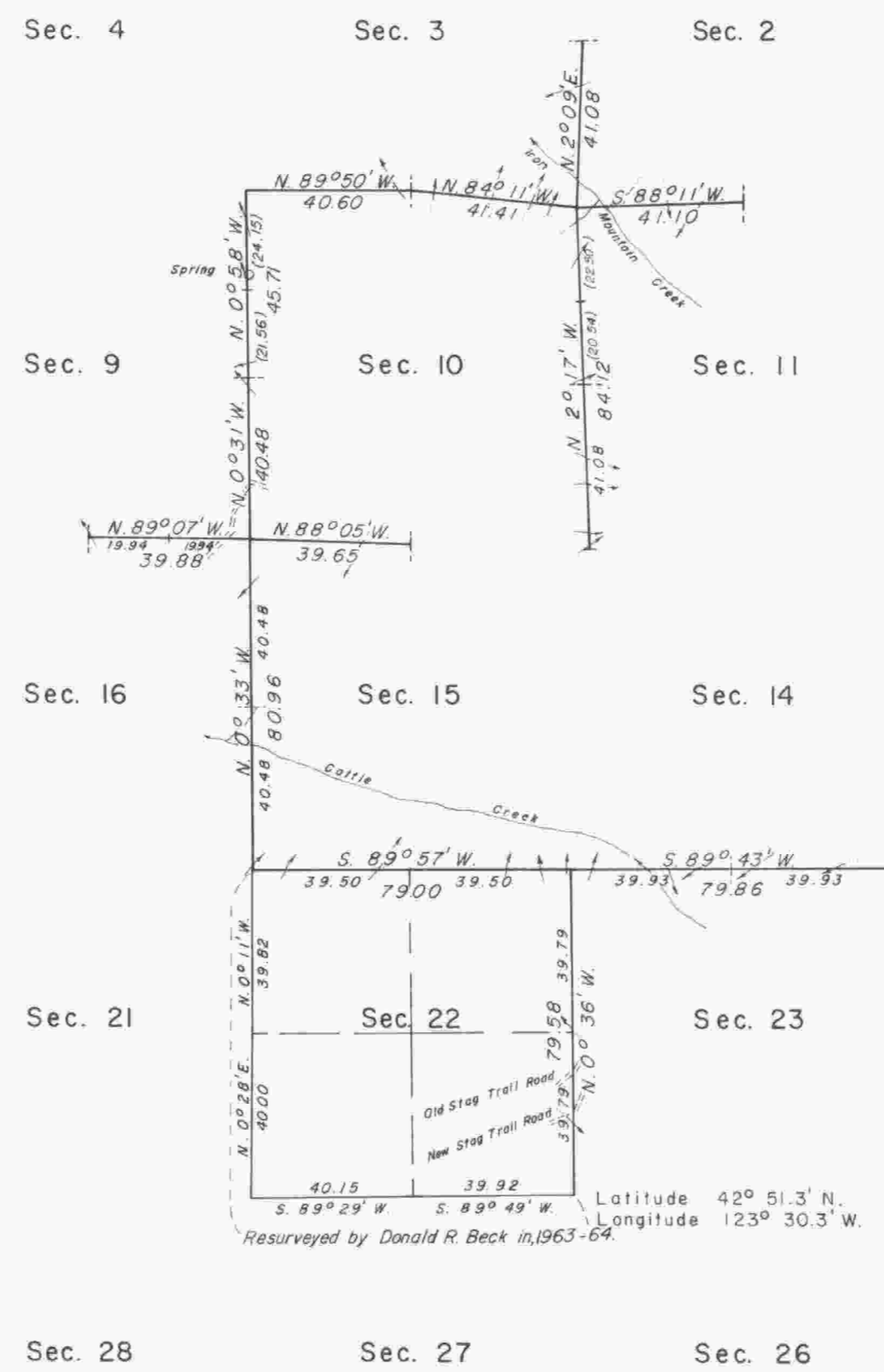


TOWNSHIP 31 SOUTH, RANGE 7 WEST, OF THE WILLAMETTE MERIDIAN, OREGON.
DEPENDENT RESURVEY



This plat represents a retracement and reestablishment of a portion of the subdivisional lines, T. 31 S., R. 7 W., Willamette Meridian, Oregon, designed to restore the corners in their true original locations according to the best available evidence.

The lottings and areas are as shown on the plats approved January 8, 1873, and October 5, 1882.

A portion of the subdivisional lines was surveyed by William H. Byars, in 1872.

A portion of the subdivisional lines was surveyed by William H. Byars, in 1882.

A portion of the subdivisional lines was retraced and the survey of the subdivisional lines was completed by Gerald A. Sorrels, in 1918.

A portion of the subdivisional lines was resurveyed by Donald R. Beck, in 1963-64.

A portion of the subdivisional lines was resurveyed by James E. Jelley, in 1960. At this time, he also remonumented, without survey, the corner of sections 13, 14, 23, and 24.

The resurvey was executed by Owen C. Chatters II, Cadastral Surveyor, from April 1, 1974, to June 19, 1974, under Special Instructions dated March 21, 1974, which provide for the surveys included under Group No. 834, Oregon.

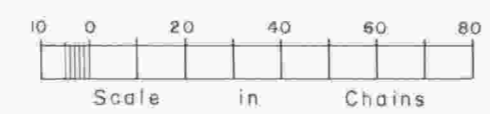
UNITED STATES DEPARTMENT OF THE INTERIOR
BUREAU OF LAND MANAGEMENT
Washington, D.C. June 29, 1978

This plat is strictly conformable to the approved field notes, and the survey, having been correctly executed in accordance with the requirements of law and the regulations of this Bureau, is hereby accepted.

For the Director

Bernard W. Forstner
Chief, Division of Cadastral Survey

Suspension Lifted, July 12, 1982, File 9622.1 (OR942)



Timber in this area consists of fir, hemlock, pine, maple, and chinquapin.

TD

WAL