

TOWNSHIP 31 SOUTH, RANGE 6 WEST, OF THE WILLAMETTE MERIDIAN, OREGON

Date: 10/13/2020 By: JC

This survey consists of:

Map: PLAT: T31-6 2020-1

Narrative: VOL. 59 PG 23798-9

Corner Rep: NO SEPARATE LINES NOTES ALL INFORMATION IS ON THE PLAT

SHEET 1 OF 2

DEPENDENT RESURVEY

DOUGLAS COUNTY SURVEYOR

This plat constitutes the entire record of the dependent resurvey of a portion of the subdivisional lines, Township 31 South, Range 6 West, Willamette Meridian, Oregon, designed to restore the corners in their true original locations according to the best available evidence.

The direction of the lines are based on the true meridian as determined by Global Positioning System (GPS) techniques and carried forward by sustained angulation using conventional survey techniques. All measurements along the lines were derived through the use of electronic measuring equipment. Measured distances and directions have been adjusted by computer software that incorporates a least squares adjustment routine. The adjusted mean bearings and mean horizontal ground elevation distances are reported to the nearest second and 0.01 foot.

The lottings and areas are as shown on the plat approved October 5, 1882.

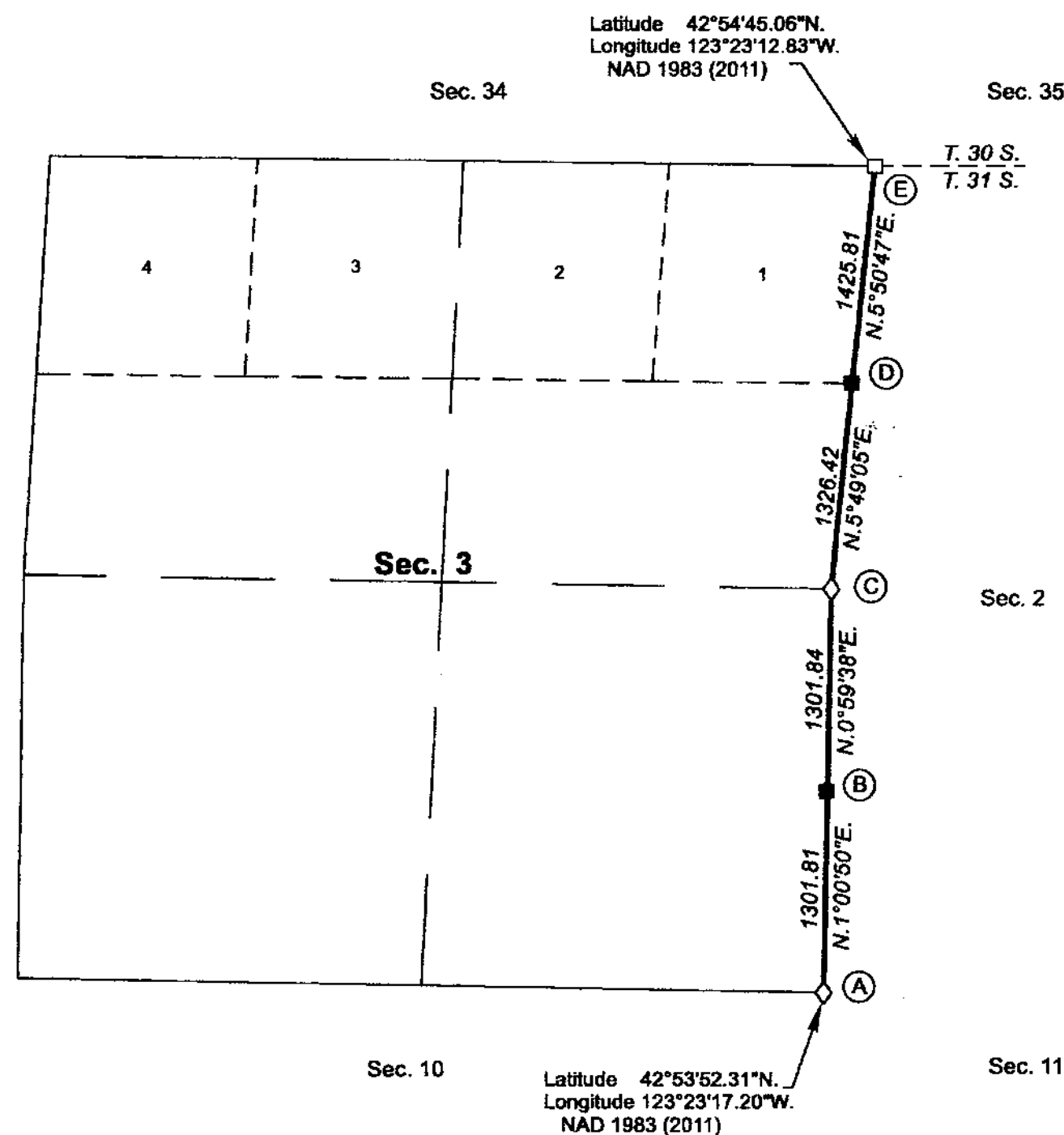
Preliminary to the resurvey, the lines of the official original survey and resurveys were retraced and search was made for all corners, lines, other calls of the record, and, where available, collateral evidence of local surveys and corners. Identified corners were perpetuated in their original positions. The retracement data was thoroughly verified and only the true line field notes are given hereon.

Each new bearing tree has a 2 1/2 inch x 1/4 inch magnetic nail (Mag Nail) driven at the base on right side center, unless otherwise noted in the corner description. Aluminum angle irons were driven alongside each monument unless a similar marker was already in place.

Only those lines bounding Federal interest land were blazed.

The geographic positions shown hereon were determined by ties from temporary GPS control points, established utilizing dual frequency, carrier phase GPS receivers, and processed using the National Geodetic Survey's Online Positioning User Service (OPUS).

The survey was executed in accordance with the specifications set forth in the Manual of Surveying Instructions (2009), and the special instructions approved September 8, 2017, for Group No. 2891, Oregon, by Jeffrey O. Covington, Cadastral Surveyor, beginning on October 3rd, 2017, and completed on March 20th, 2018. He was assisted by Robert NMI Durning, Surveying Technician.



The history of the official surveys pertaining to this survey is as follows:

In 1855, Addison R. Flint, U.S. Deputy Surveyor, surveyed the south boundary of T. 30 S., R. 6 W., as shown on the official plat of survey approved December 10, 1855.

In 1882, William H. Byars, U.S. deputy Surveyor, surveyed the subdivisional lines of T. 31 S., R. 6 W., as shown on the official plat of survey approved October 5, 1882.

In 1998, Bryan S. Seibold, Cadastral Surveyor, subdivided section 3 of T. 31 S., R. 6 W., as shown on the official plat of survey accepted July 9, 2001.

The following local surveys (M) and county surveyor file (CS), filed in the Douglas County Surveyor's Office are referred to in subsequent corner descriptions and are referenced by surveyor's last name or official title, Professional Land Surveyor (PLS) No. or Professional Engineer (PE) No., and Year.

Date	Name and Registration Number	File Number
1949	John H. Markham Jr., PE No. 2880	CS40/233
1950	John H. Markham Jr., PE No. 2880	CS40/233
1966	Douglas County Surveyor's Office	CS54/31-5
1966	Douglas County Surveyor's Office	CS54/31-6
1969	James W. Byron, PLS No. 303	M37-62
1981	Douglas County Surveyor's Office	CS61/19-47
1995	Raymond F. Brown, PLS No. 2391	M119-61
1996	Douglas County Surveyor's Office	CS65/9-17
2005	Kristian O. DeGroot, PLS No. 1941	M146-18
2018	Raymond F. Brown, PLS No. 2391	CS65/100-3

I, Jeffrey O. Covington, Cadastral Surveyor, HEREBY CERTIFY upon honor, that in pursuance of special instructions bearing the approval date of the 8th day of September, 2017, and the assignment instructions bearing the date of the 11th day of September, 2017, I have dependently resurveyed a portion of the subdivisional lines, Township 31 South, Range 6 West, Willamette Meridian, Oregon, which is represented upon this plat as having been executed by me and under my direction; and that said survey has been made in strict conformity with said special instructions, the Manual of Surveying Instructions, and in the specific manner described on this plat.

Jeffrey O. Covington
Cadastral Surveyor

May 14, 2020
Date

LEGEND

- ◇ Original corner previously remonumented
- Corner previously established or reestablished
- Corner previously established or reestablished; remonumented this survey

UNITED STATES DEPARTMENT OF THE INTERIOR
BUREAU OF LAND MANAGEMENT

Portland, Oregon

The survey represented by this plat, having been correctly executed in accordance with the requirements of law and the regulations of this Bureau, is hereby accepted.

For the Director

Mary J. M. Hart
Chief Cadastral Surveyor of Oregon

May 18, 2020
Date

B. C. W.



OFFICIALLY FILED: 8/21/2020

TOWNSHIP 31 SOUTH, RANGE 6 WEST, OF THE WILLAMETTE MERIDIAN, OREGON
DEPENDENT RESURVEY

FILED

Date: 10/13/2020 By: JC
This survey consists of:
Map: PLAT: T31-6 2020-1
Narrative: VOL. 59 PG 23798-9
Corner Rpt: ALL INFORMATION IS ON THE PLAT

SHEET 2 OF 2

DOUGLAS COUNTY
SURVEYOR

(A) The cor. of secs. 2, 3, 10, and 11, perpetuated by Markham Jr., PE No. 2880, in December 1949, filed as CS40/233; subsequently perpetuated by Douglas County Surveyor's Office, in 1966; further perpetuated by Douglas County Surveyor's Office, in 1996; monumented with an iron post, 1 1/4 ins. diam., firmly set, projecting 8 ins. above ground (alongside of which is an iron pipe, 1 1/2 ins. diam. firmly set, projecting 6 ins. above ground), with a brass cap mkd.

COUNTY SURVEYORS OFFICE
T 31 S R 6 W
S 3 | S 2

S 10 | S 11
1966

from which the remains of an original bearing tree

A hollowed madrone, 18 ins. diam., bears N. 60° E., 44.2 ft. dist., with no marks visible on open blaze.

and the remains of the bearing trees mkd. by Douglas County Surveyor's Office in 1966

A roothole bears N. 55° E., 13.4 ft. dist., alongside of which is a down decayed fir, 11 ins. diam., with reverse scribe marks T31S R6W visible on inside of the healed blaze.

A decayed fir snag, 18 ins. diam., bears S. 6° E., 17.2 ft. dist., axe marks visible.

A sawed decayed fir stump, 12 ins. diam., bears S. 44 3/4° W., 22.4 ft. dist., with a healed blaze.

A decayed fir snag, 22 ins. diam., bears N. 31 1/2° W., 26.6 ft. dist., with a healed blaze.

and the remains of the bearing trees mkd. by Douglas County Surveyor's Office in 1996

A sawed madrone stump, 5 ins. diam., bears S. 65 3/4° W., 16.2 ft. dist., with illegible scribe marks visible on partially healed blaze.

A madrone, 11 ins. diam., bears N. 3 1/4° W., 35.2 ft. dist., with a partially healed double blaze.

and new bearing trees

A fir, 9 ins. diam., bears S. 29 3/4° E., 20.6 ft. dist., mkd. T31S R6W S11 BT.

A madrone, 5 ins. diam., bears S. 67 1/2° W., 16.2 ft. dist., mkd. X BT on bark.

(B) The S 1/16 sec. cor. of secs. 2 and 3, established by DeGroot, PLS No. 1941, in 2005; and is accepted as the cor.; monumented with an iron rod, 5/8 in. diam., firmly set, projecting 4 ins. above ground, with an aluminum cap mkd.

T 31 S R 6 W
S 1/16
S 3 | S 2

2005
PLS 1941

from which the bearing trees mkd. by DeGroot

A fir, 21 ins. diam., bears S. 30 3/4° E., 32.3 ft. dist., with a healed double blaze.

A fir, 10 ins. diam., bears S. 79 1/4° W., 13.8 ft. dist., with a healed double blaze.

At the corner point

Set a stainless steel post, 28 ins. long, 2 1/2 ins. diam., 27 ins. in the ground, directly over the iron rod, 30 ins. long, with brass cap mkd.

S 1/16
S 3 | S 2

2017

From this cor., a point established as the S 1/16 sec. cor. of secs. 2 and 3 by Markham, PE No. 2880, in November 1949, filed as CS40/233; bears S. 44° 18' 13" W., 12.04 ft. dist., monumented with an iron rod, 5/8 in. diam., firmly set, projecting 8 ins. above ground, and was not utilized in the course of this survey.

(C) The 1/4 sec. cor. of secs. 2 and 3, perpetuated by DeGroot, PLS No. 1941, in 2005; monumented with a stainless steel post, 2 1/2 ins. diam., firmly set, projecting 2 ins. above ground, with a brass cap mkd.

1/4
S 3 | S 2

T 31 S R 6 W
1998

from which the remains of an original bearing tree

A madrone, 27 ins. diam., bears N. 70 1/2° E., 33.3 ft. dist., with illegible scribe marks visible on a hollowed open blaze.

and the remains of a bearing tree mkd. by Markham, PE No. 2880, in 1950, reported by Seibold in 1998

A decayed madrone stump, 34 ins. diam., bears S. 68° W., 53.1 ft. dist., no marks visible.

and the remains of the bearing trees mkd. by Douglas County Surveyor's Office, in 1966

A decayed fir stump, size indeterminate, bears S. 69 1/4° E., 10.1 ft. dist., alongside of which is a down fir, 7 ins. diam., no marks visible.

A decayed fir stump, 13 ins. diam., bears S. 38° W., 29.0 ft. dist., with a healed blaze.

and a bearing tree mkd. by Seibold in 1998

A cedar, 17 ins. diam., bears N. 32 1/2° W., 19.5 ft. dist., with a healed blaze.

and the accessories mkd. by DeGroot

An iron rod, 5/8 in. diam., firmly set, projecting 3 ins. above ground, bears S. 51° 03' 35" E., 27.65 ft. dist., with illegible marks on a damaged yellow plastic cap.

A fir, 15 ins. diam., bears S. 66 1/4° W., 17.5 ft. dist., with a healed blaze.

(D) The N 1/16 sec. cor. of secs. 2 and 3, established by Brown, PLS No. 2391, in 1995, filed in 2018; and is accepted as the cor.; monumented with an iron rod, 5/8 in. diam., firmly set, with top flush with the surface of the ground, with a plastic cap mkd. R. BROWN PLS 2391, from which bearing trees mkd. by Brown

A madrone, 25 ins. diam., bears S. 70 1/4° W., 23.9 ft. dist., with scribe marks 16 S visible on partially healed blaze.

A fir, 14 ins. diam., bears N. 53 1/2° W., 22.0 ft. dist., with a healed double blaze.

At the corner point

Set a stainless steel post, 28 ins. long, 2 1/2 ins. diam., 24 ins. in the ground, directly over the iron rod, 30 ins. long, with brass cap mkd.

N 1/16
S 3 | S 2

2018

from which

A fir, 12 ins. diam., bears S. 57° E., 24.7 ft. dist., mkd. N1/16 S2 BT.

(E) The cor. of secs. 2, 3, 34, and 35, on the N. bdy. of the Tp., reestablished by proportionate measurement by Byron, PLS No. 303, in 1969; perpetuated by Douglas County Surveyor's Office, in 1981. There is no remaining evidence of the original cor., therefore this point is accepted as a careful and faithful reestablishment of the cor.; monumented with an iron post, 1 1/4 ins. diam., firmly set, projecting 16 ins. above ground, with a brass cap mkd.

COUNTY SURVEYORS OFFICE
T 30 S R 6 W
S 34 | S 35

S 3 | S 2

T 31 S
1969

from which the remains of the bearing trees mkd. by Byron

An oak, 25 ins. diam., bears S. 36 1/2° E., 70.0 ft. dist., with no marks visible on partially healed blaze.

A cedar, 25 ins. diam., bears N. 81 3/4° W., 37.0 ft. dist., with a healed blaze.

A decayed fir stump, 33 ins. diam., bears N. 16 3/4° W., 10.7 ft. dist., no marks visible.

and a bearing tree mkd. by Douglas County Surveyor's Office

A fir, 25 ins. diam., bears S. 11 3/4° E., 33.9 ft. dist., with a healed blaze.

and new bearing trees

A fir, 15 ins. diam., bears N. 73° E., 17.9 ft. dist., mkd. T30S R6W S35 BT.

A fir, 10 ins. diam., bears S. 61° W., 30.5 ft. dist., mkd. T31S R6W S3 BT.

UNITED STATES DEPARTMENT OF THE INTERIOR
BUREAU OF LAND MANAGEMENT

Portland, Oregon

The survey represented by this plat, having been correctly executed in accordance with the requirements of law and the regulations of this Bureau, is hereby accepted.

For the Director

Mary J. M. Hart
Chief Cadastral Surveyor of Oregon

May 18, 2020
Date