

TOWNSHIP 31 SOUTH, RANGE 6 WEST, OF THE WILLAMETTE MERIDIAN, OREGON

RETRACEMENT

FILED
 Date: 7/20/2010 By: JC
 This survey consists of:
 Map: BLM LINE NOTES
 Narrative: VOL. 56
 Corner Rpt: PGS 22169-22175
 DOUGLAS COUNTY
 SURVEYOR

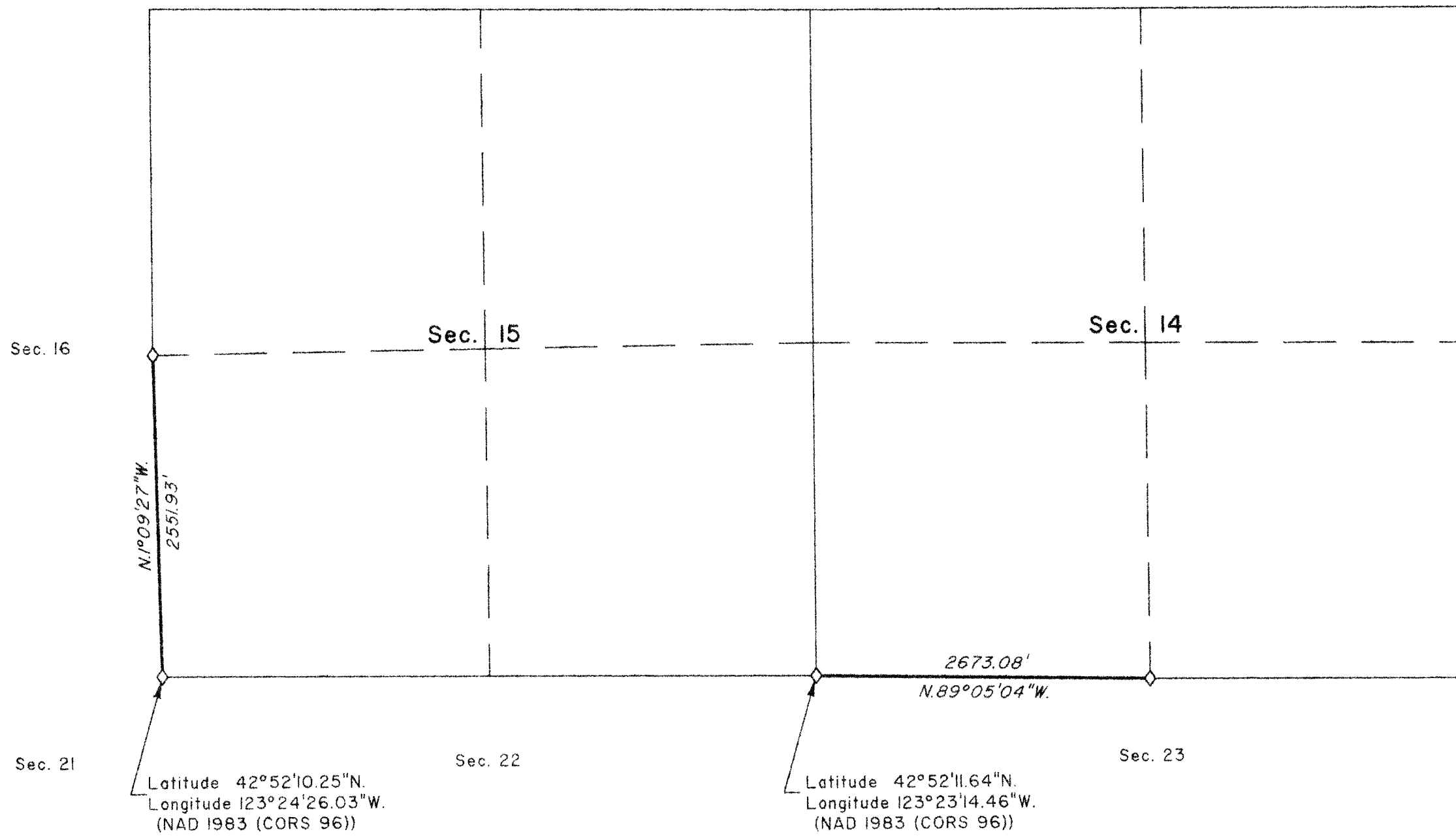
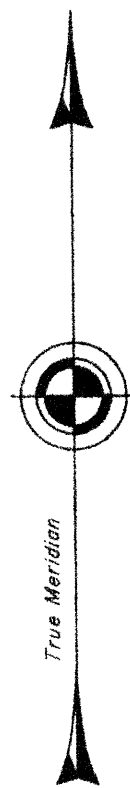
A history of surveys is contained in the field notes.

This plat represents the retracement of a portion of the subdivisional lines, T. 31 S., R. 6 W., Willamette Meridian, Oregon.

The survey was performed utilizing both conventional (directly measured angles and distances) and NAVSTAR Global Positioning System (GPS) satellite techniques. The GPS baselines and conventionally measured distances and directions have been adjusted by computer software that incorporates a least squares adjustment routine. The adjusted bearings and distances are reported to the nearest second and 0.01 foot.

Except as shown hereon, the lottings and areas are as shown on the plat approved October 5, 1882.

This survey was executed by Kenneth W. Saveland, Cadastral Surveyor, beginning March 31, 2008 and completed April 10, 2008, pursuant to Special Instructions dated March 16, 2007, under Group Number 2300, Oregon, Administrative File Number 0807.



LEGEND
 ◊ Original corner previously remonumented

UNITED STATES DEPARTMENT OF THE INTERIOR
 BUREAU OF LAND MANAGEMENT

Portland, Oregon

This plat is strictly conformable to the approved field notes and the retracement, having been correctly executed in accordance with the requirements of law and the regulations of this Bureau, is hereby accepted.

For the Director

Margy M. Hartzel

Chief Cadastral Surveyor of Oregon

May 4, 2010
 Date

