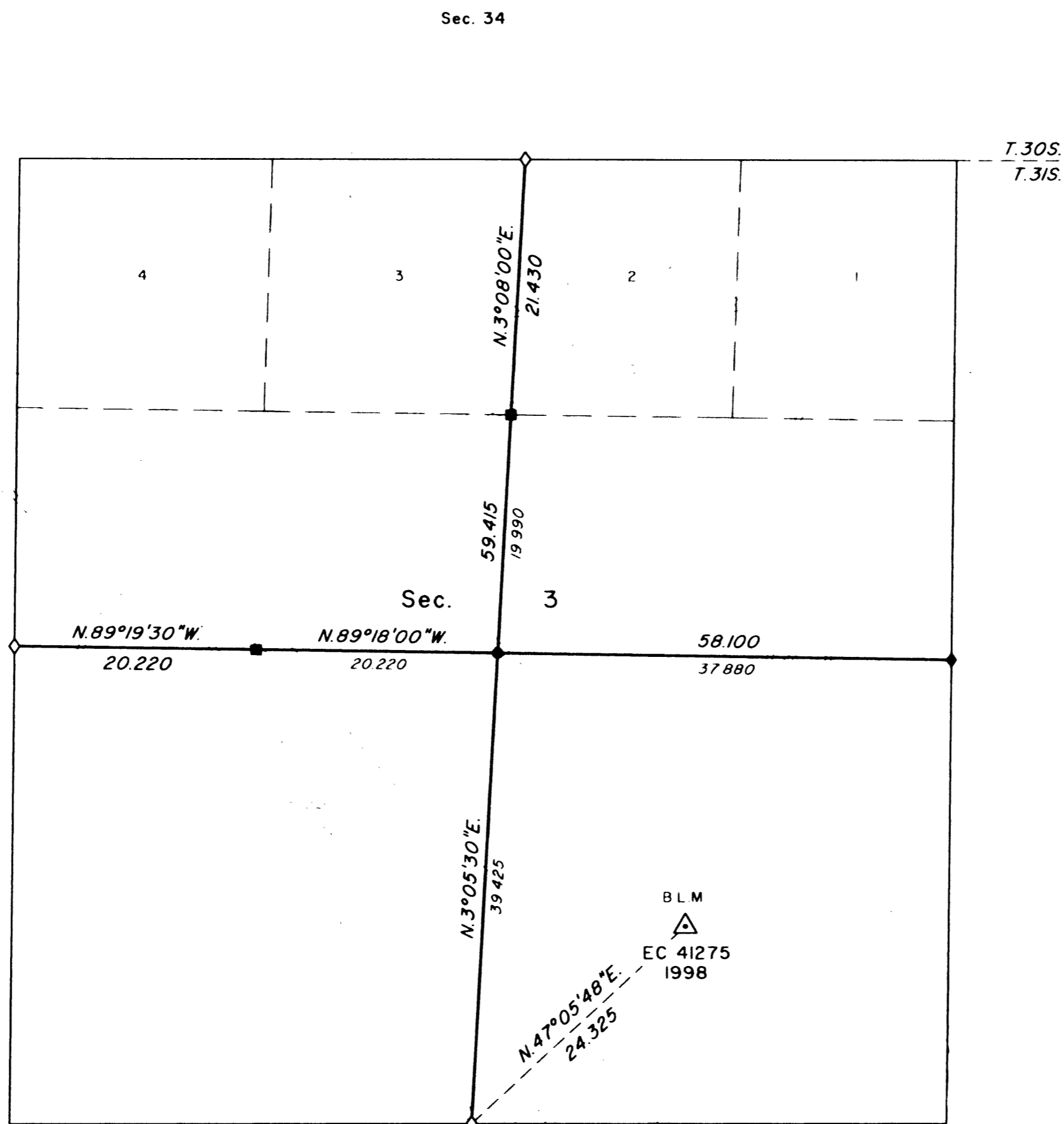
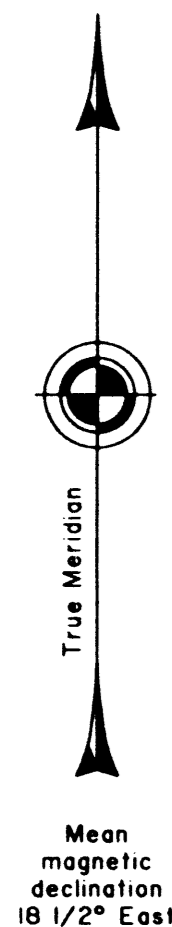


TOWNSHIP 31 SOUTH, RANGE 6 WEST, OF THE WILLAMETTE MERIDIAN, OREGON

SUBDIVISION OF SECTION 3



A history of surveys is contained in the field notes.

This plat represents a subdivision of section 3, T. 31 S., R. 6 W., Willamette Meridian, Oregon.

The lottings and areas are as shown on the plat approved October 5, 1882.

The survey was executed by Bryan S. Seibold, Cadastral Surveyor, beginning May 12, 1998, and completed July 8, 1998, pursuant to Special Instructions dated March 23, 1998, under Group Number 1875, Oregon.

Timber in this area consists of fir, cedar, hemlock, alder, maple, oak, chinquapin, pine, ash, yew, and madrone.

The tie to the geodetic control station is reported as mean bearing and sea level distance.

LEGEND

- ◊ Original corner previously remonumented
- ◆ Original corner remonumented this survey
- Corner previously established or reestablished; remonumented this survey
- Corner established or reestablished this survey

UNITED STATES DEPARTMENT OF THE INTERIOR
BUREAU OF LAND MANAGEMENT

Portland, Oregon

July 9, 2001

This plat is strictly conformable to the approved field notes, and the survey, having been correctly executed in accordance with the requirements of law and the regulations of this Bureau, is hereby accepted.

For the Director

Wayne D. Gardner
Chief Cadastral Surveyor of Oregon

