

TOWNSHIP 31 SOUTH, RANGE 6 WEST, OF THE WILLAMETTE MERIDIAN, OREGON.
 DEPENDENT RESURVEY AND SUBDIVISION OF SECTION 18

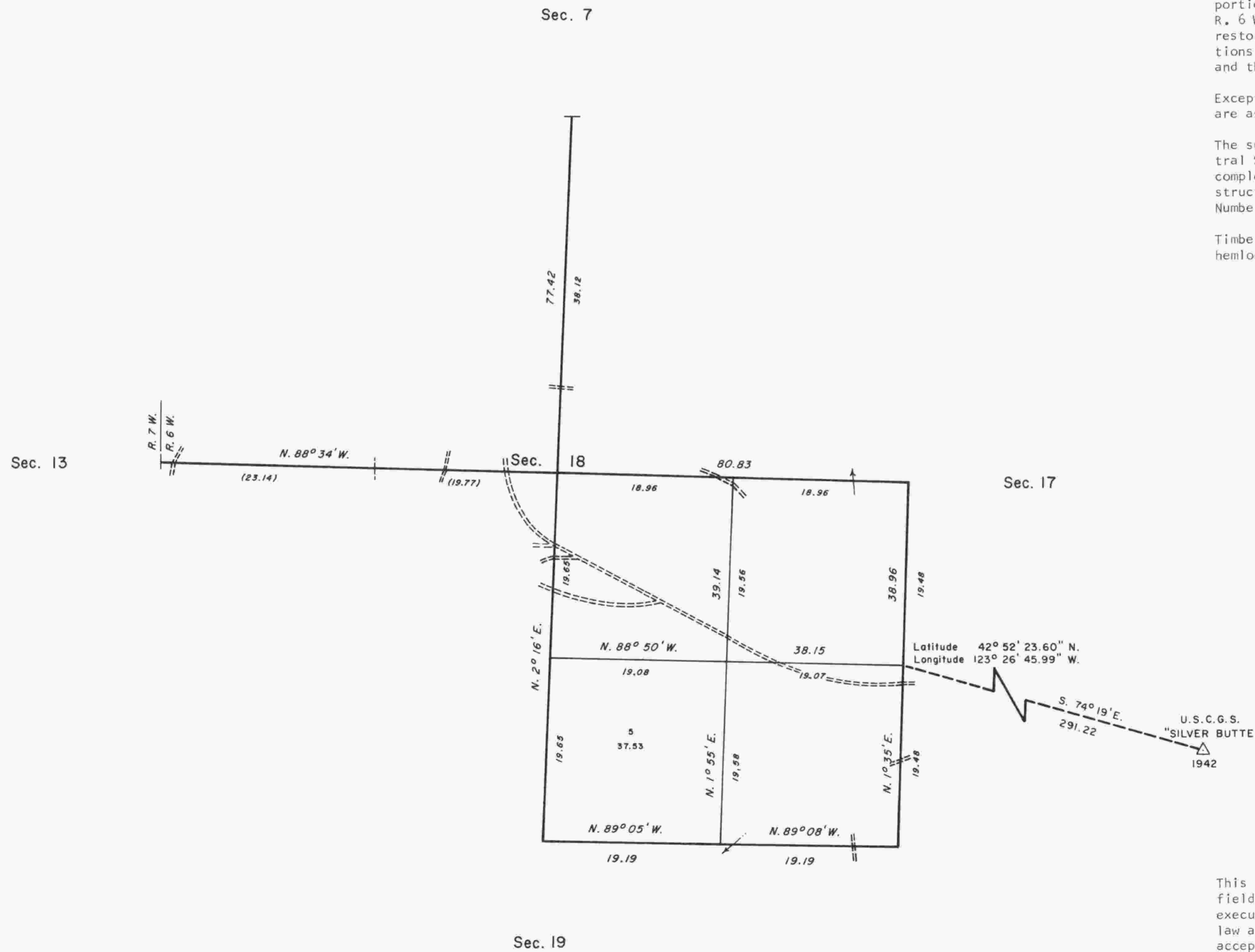
The history of surveys is contained in the field notes.

This plat represents a dependent resurvey of a portion of the subdivisional lines, T. 31 S., R. 6 W., Willamette Meridian, Oregon, designed to restore the corners in their true original locations according to the best available evidence, and the subdivision of section 18.

Except as shown hereon, the lottings and areas are as shown on the plat approved October 5, 1882.

The survey was executed by James L. White, Cadastral Surveyor, beginning December 13, 1984, and completed January 8, 1985, pursuant to Special Instructions dated September 6, 1984, under Group Number 1232, Oregon.

Timber in this area consists of fir, cedar, pine, hemlock, madrone, maple, and chinquapin.



UNITED STATES DEPARTMENT OF THE INTERIOR
 BUREAU OF LAND MANAGEMENT
 Portland, Oregon September 4, 1987

This plat is strictly conformable to the approved field notes, and the survey, having been correctly executed in accordance with the requirements of law and the regulations of this Bureau, is hereby accepted.

For the Director

William W. Glenn
 Chief Cadastral Surveyor of Oregon

